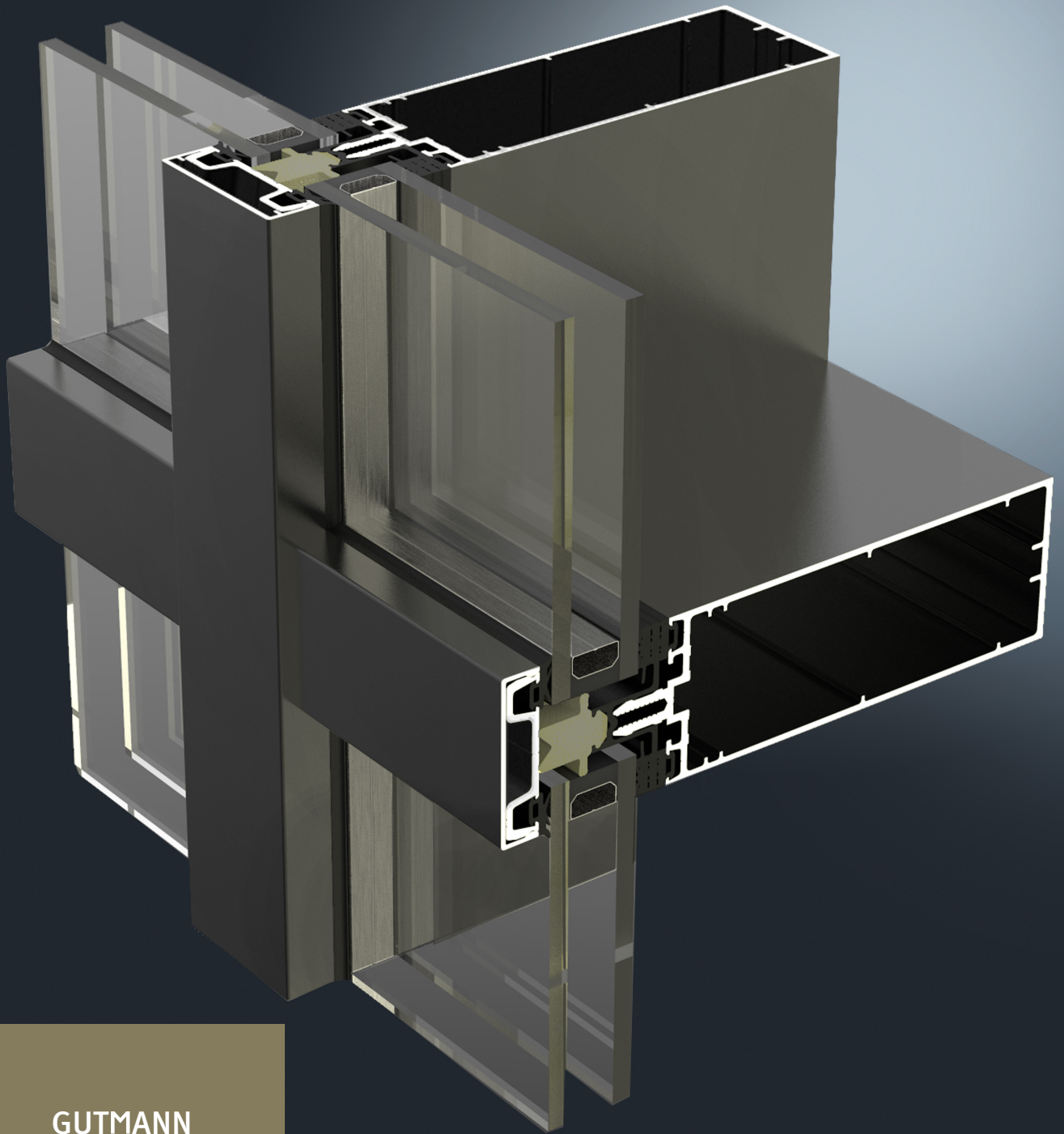




# GUTMANN F50++

Curtain Wall Capped System



**GUTMANN**  
New dimensions  
offer new  
perspectives

ALUMINUM SHAPED BY GUTMANN



## **GUTMANN F50++ ALUMINUM FACADE**

Innovative technology at its peak, with greater design and constructive flexibility

The GUTMANN Curtain Wall Capped System fulfills all the architectural requirements. GUTMANN provides an innovative system solution with a competitive edge in technology and cost-effectiveness.

The GUTMANN Curtain Wall Capped System F50++ provides high-quality products, fast installation, simplified fabrication, superior performance, and design flexibility. This system is applicable in sloped and vertical curtain wall systems.

## SYSTEM DESCRIPTION

- › Identical profiles for mullion and transom, straight cutting, with no transom profile notching for the system results in minimal off-cuts, as well as efficient manufacturing and installation
- › Narrow 2" (50mm) sightline
- › Various system depths available to suit most design and load requirements
- › Identical widths of inner glass gaskets at mullions and transoms
- › The system is outside pressure glazed, available with captured or 2 way structural glazing
- › Controlled drainage system via a special transom and mullion gasket
- › Transom connector for simple and secure transom connection
- › Different options of joint connectors
- › Glazing options of  $1\frac{5}{16}$ " -  $2\frac{1}{2}$ " (24mm - 65mm) for double glazed and  $\frac{3}{8}$ " -  $\frac{7}{8}$ " (10mm - 22mm) for the single glass option
- › Maximum glass loads up to 400-730 kg, depending on wind loads
- › Proprietary gasket supplied improves thermal performance
- › Can be used for vertical and sloped curtain wall system
- › Different colour options are available
- › Tested to AAMA and ASTM standards

Our in-house design assistance, engineering, and manufacturing ensure maximum efficiency throughout the entire process.

## SYSTEM PROPERTIES



Air Infiltration

**ASTM E283/E283M-19**

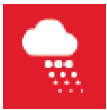
0.01 cfm/ft<sup>2</sup> @ 6.24 PSF (300Pa)



Structural Performance

**ASTM E330**

up to +/-60 PSF (+/-2880Pa)



Water Penetration

**ASTM E331-00 AAMA 501.1 - 17**

DYNAMIC

15 PSF (720Pa)

STATIC

15 PSF (720Pa)



Thermal Transmittance (U-Factor)

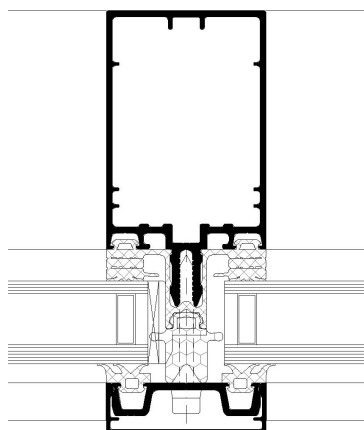
**NFRC 100**

0.18 (DG)-COG-0.10 with Aluminum Spacer This value may vary according to glass choice, framing configuration, and spandrel to vision ratios.

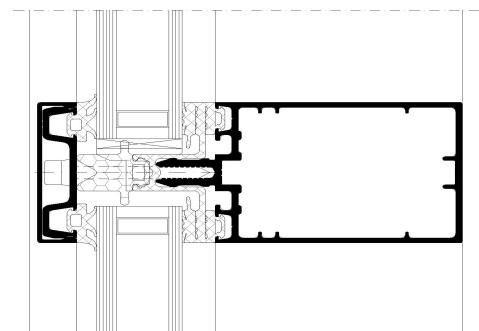
## OPTIONAL FEATURES

- › The captured system heavy-weight mullion is available for 2" x 7  $\frac{11}{16}$ " (50mm x 195mm) system
- › The captured system integrates with standard GUTMANN windows and doors
- › The captured system integrates with concealed GUTMANN Vent-SK70 and S70 Visible Framed Vents

## SYSTEM CROSS-SECTION



Mullion



Transom



**GUTMANN**  
Innovative  
technology  
at the  
highest level

**BECOME A GUTMANN PARTNER AND  
ENJOY THE FOLLOWING ADVANTAGES:**

- › Many years of experience and expertise in façade business
- › We offer you everything from a single source: structural engineering advice in design and planning phase of a building, as well as support in the implementation of existing system technology with special system-based solutions
- › Top quality products are our trademark and basis of our reputation
- › High storage capacity and efficient logistics ensure fast and punctual delivery
- › Maximum customer benefit characterized by a successful combination of sophisticated design, certified safety, and sustainable profitability



**GUTMANN NORTH AMERICA**  
Suite 200, 2020 Winston Park Dr  
Oakville, ON, L6H 6X7, Canada  
T: (416) 488 6266

[www.gutmann-na.com](http://www.gutmann-na.com)