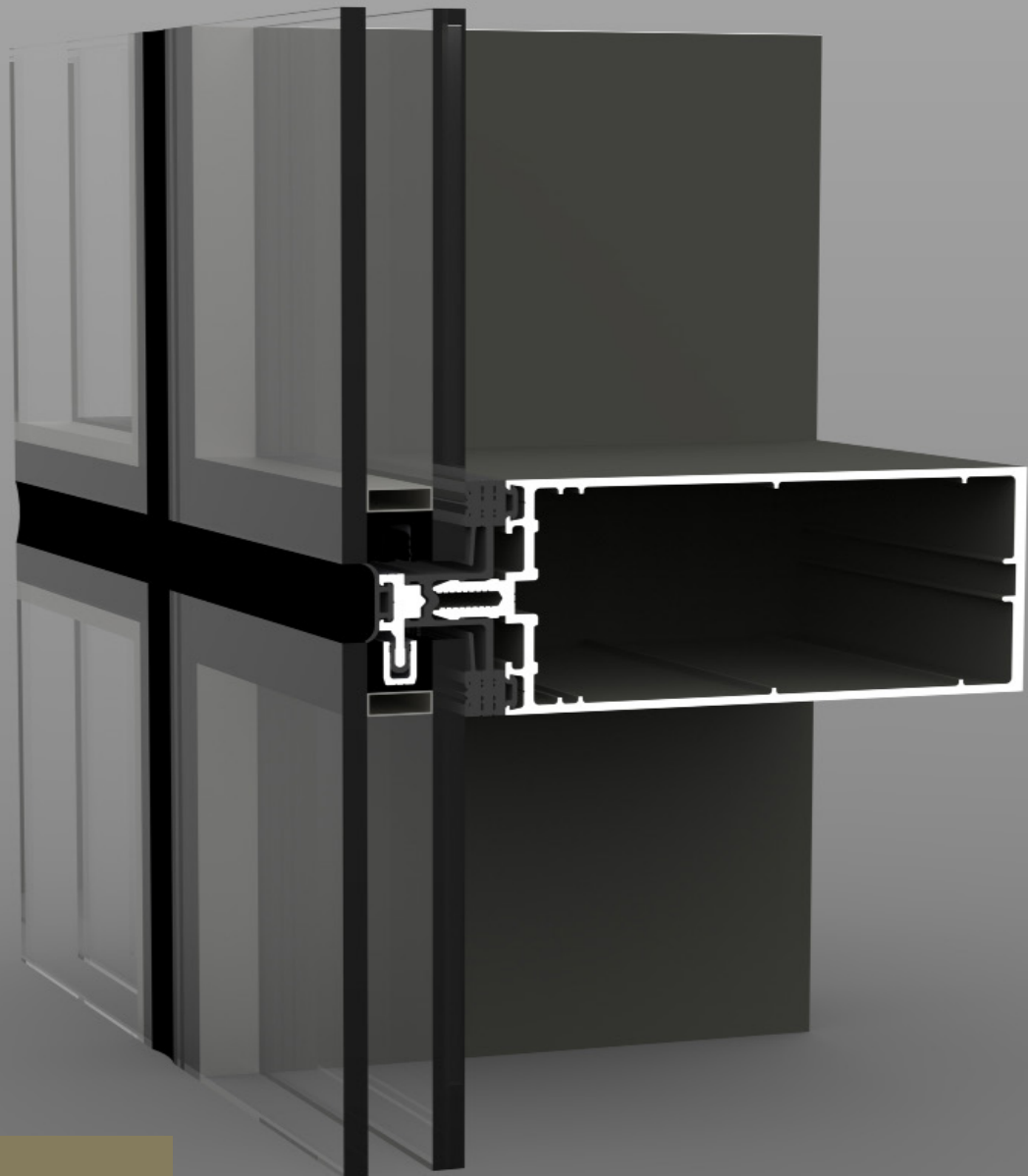




# GUTMANN F50++

Curtain Wall SSG (Toggle) System



**GUTMANN**  
New dimensions  
offer new  
perspectives

ALUMINUM SHAPED BY GUTMANN



## **GUTMANN F50++ SSG ALUMINUM FACADE**

Innovative technology at its peak, with greater design and constructive flexibility

The GUTMANN SSG or Toggle System provides a unique all-glass capless look in its F50++ Curtain Wall System.

The GUTMANN Curtain Wall System SSG F50++ (Toggle) System provides a 4 sided structural silicone flat look in a stick system. This is an economical yet quality curtain wall system with quick deliveries and easy installation. Various mullion depth profiles are available based on spans, loads, and project design. This system is applicable in sloped and vertical curtain wall configurations.



## SYSTEM DESCRIPTION

- › Identical profiles for mullion and transom, straight cutting, with no transom profile notching for the system results in minimal off-cuts, as well as efficient manufacturing and installation
- › Available in structural silicone glazing and semi structural silicone glazing options.
- › Narrow 2" (50mm) sightline
- › This curtain wall system is mechanically held by 4 sided toggles spaced as required to meet wind load
- ›  $1\frac{3}{16}$ " (20mm) exterior vertical and horizontal weather seal sightline and 2" (50mm) interior metal sightline
- › Various system depths to suit most design and load requirements
- › Identical widths of inner glass gaskets at mullions and transoms
- › Controlled drainage system via a special transom and mullion gasket
- › Glazing options of 1"-  $1\frac{7}{16}$ " (26mm - 36mm) for double-glazed
- › Maximum glass loads up to 400 - 730 kg, depending on wind loads
- › Innovative toggle assembly captures glass, eliminating field application of structural silicone
- › Screw spline joinery method allows shop assembly of ladder sections, reducing field labour
- › Can be used for vertical and sloped curtain wall system
- › Different colour options are available
- › Tested to AAMA and ASTM standards

Our in-house design assist, engineering, and manufacturing ensure maximum efficiency throughout the entire process.

## SYSTEM PROPERTIES



Air Infiltration

**ASTM E283/E283M-19**

0.01 cfm/ft<sup>2</sup> @ 6.24 PSF (300Pa)



Structural Performance

**ASTM E330**

up to +/-60 PSF (+/-2880Pa)



Water Penetration

**ASTM E331-00 AAMA 501.1-17**

**DYNAMIC**

15 PSF (720Pa)

**STATIC**

15 PSF (720Pa)



Thermal Transmittance (U-Factor)

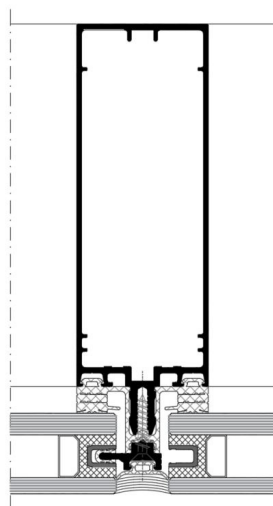
**NFRC 100**

0.18 (DG)-COG-0.10 with Aluminum Spacer  
This value may vary according to glass choice, framing configuration, and spandrel to vision ratios.

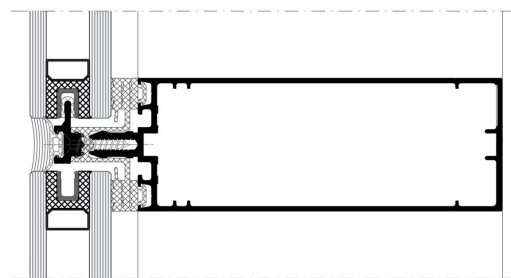
## OPTIONAL FEATURES

- › SSG system heavy-weight mullion available for 2" x  $7\frac{11}{16}$ " (50mm x 195mm)
- › SSG system integrates with standard GUTMANN windows and doors
- › SSG system integrates with concealed GUTMANN Vent-SK70

## SYSTEM CROSS-SECTION



Mullion



Transom



**GUTMANN**  
Innovative  
technology  
at the  
highest level

**BECOME A GUTMANN PARTNER AND  
ENJOY THE FOLLOWING ADVANTAGES:**

- › Many years of experience and expertise in façade business
- › We offer you everything from a single source: structural engineering advice in design and planning phase of a building, as well as support in the implementation of existing system technology with special system-based solutions
- › Top quality products are our trademark and basis of our reputation
- › High storage capacity and efficient logistics ensure fast and punctual delivery
- › Maximum customer benefit characterized by a successful combination of sophisticated design, certified safety, and sustainable profitability



**GUTMANN NORTH AMERICA**  
Suite 200, 2020 Winston Park Dr  
Oakville, ON, L6H 6X7, Canada  
T: (416) 488 6266

[www.gutmann-na.com](http://www.gutmann-na.com)