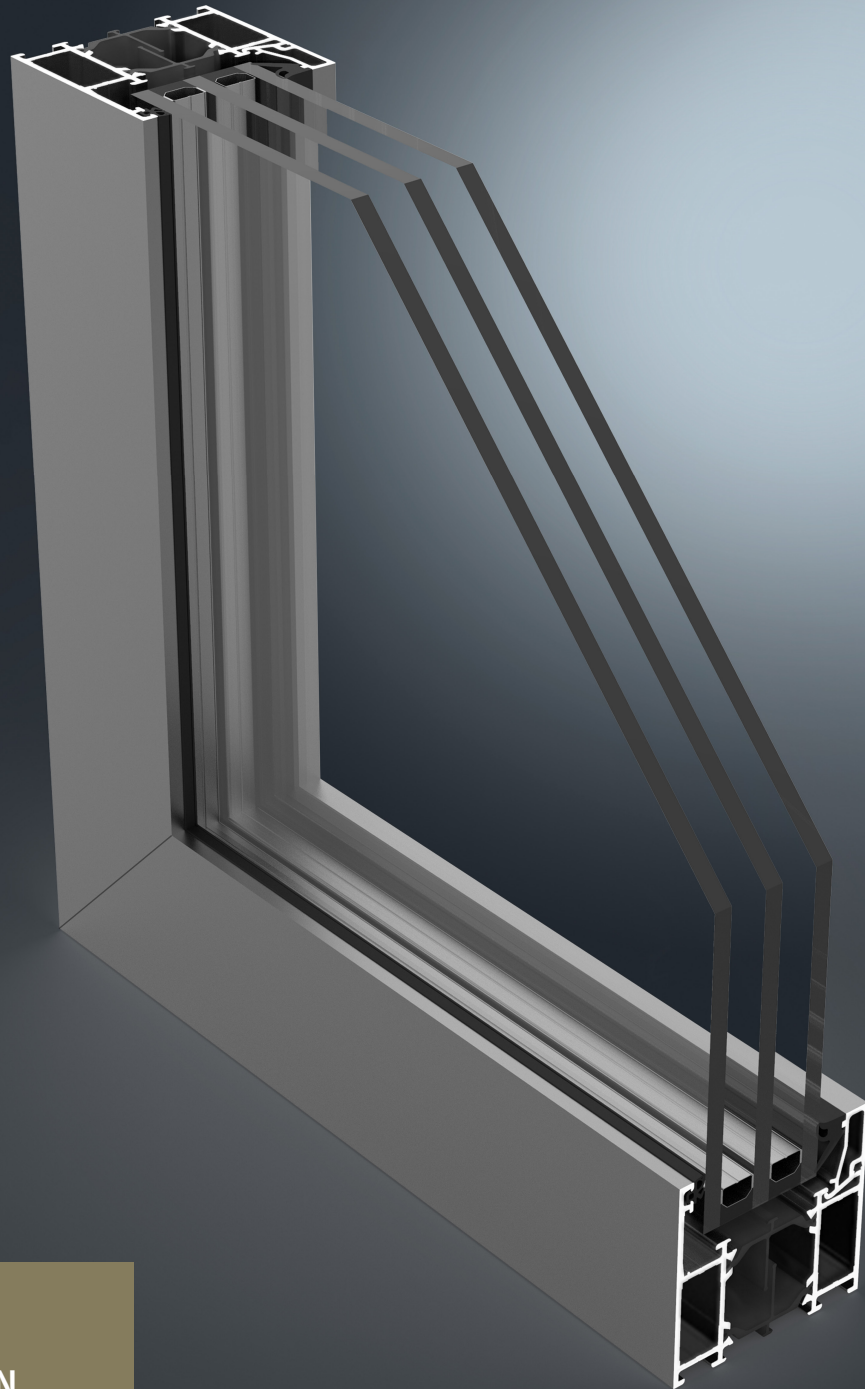




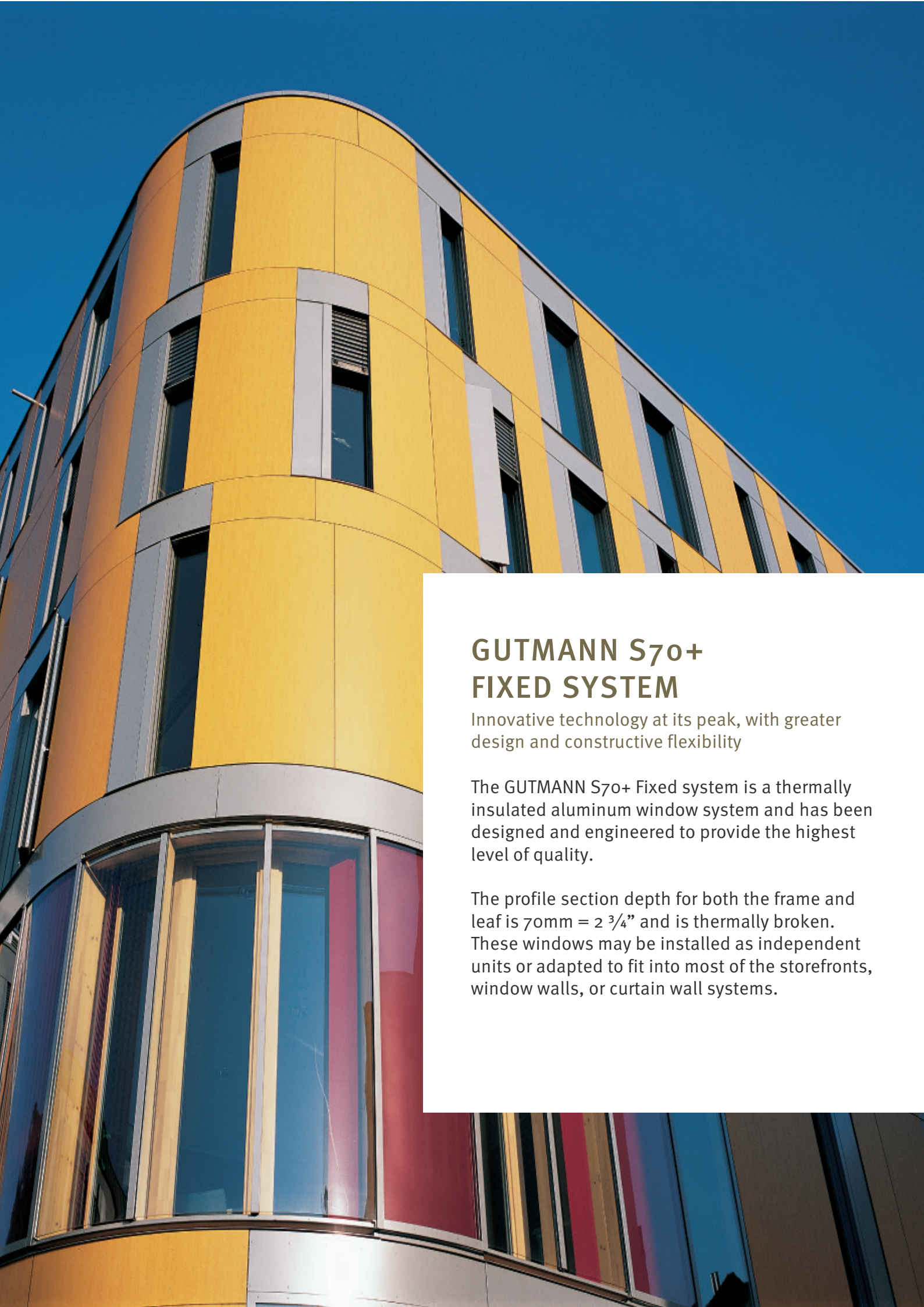
GUTMANN S70+

Fixed Window System



GUTMANN
New dimensions
offer new
perspectives

ALUMINUM SHAPED BY GUTMANN



GUTMANN S70+ FIXED SYSTEM

Innovative technology at its peak, with greater design and constructive flexibility

The GUTMANN S70+ Fixed system is a thermally insulated aluminum window system and has been designed and engineered to provide the highest level of quality.

The profile section depth for both the frame and leaf is 70mm = 2 3/4" and is thermally broken. These windows may be installed as independent units or adapted to fit into most of the storefronts, window walls, or curtain wall systems.

SYSTEM DESCRIPTION

- › AW90 Performance Class
- › Symmetrical, stable structural design with identical corner and T connectors
- › Thermally and structurally optimized winglet insulator with high-strength polyamide thermal barrier
- › Available in several profile depths
- › Glass up to 2" (50mm) in the fixed panel
- › Life Cycle Tested to AAMA 910 and NAFS

Our in-house design assistance, engineering, and manufacturing ensure maximum efficiency throughout the entire process.

SYSTEM PROPERTIES



Uniform Load Structural Test Pressure

ASTM E330-14

+/-6480 Pa (+/- 135.34 PSF)



Design Pressure

ASTM E330-14

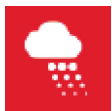
+/-4320 Pa (+/- 90.23 PSF)



Forced Entry Resistance

ASTM F588-14

Grade 10 Pass



Water Penetration

ASTM E547-00

720 Pa (15.04 PSF) - No leakage - Prior to, After Cycling and After Design Load



Canadian Air Infiltration /Exfiltration

ASTM E283

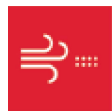
Fixed Level



Thermal Transmittance (U-Factor)

NFRC 100

The average weighted system "U" value for the wall assembly shall not exceed 0.26 Btu/hr/ft²-F^o for double glazed and 0.17 Btu/hr/ft²-F^o with triple glazed. This value may vary according to glass selection and framing configuration.

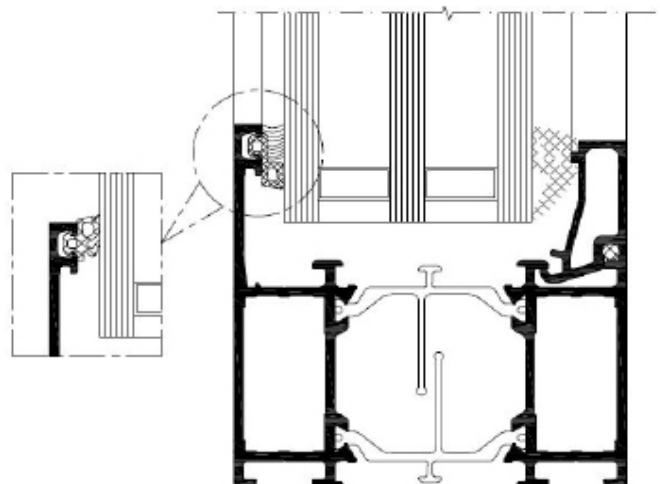
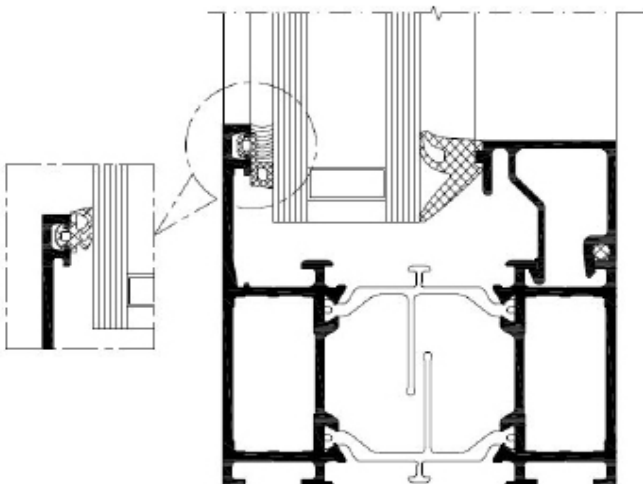
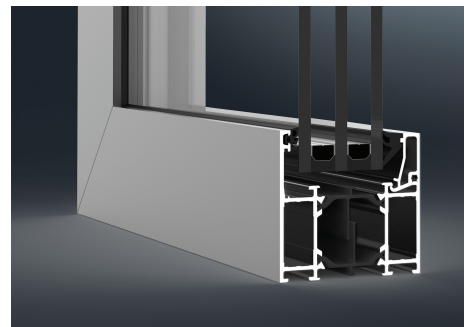
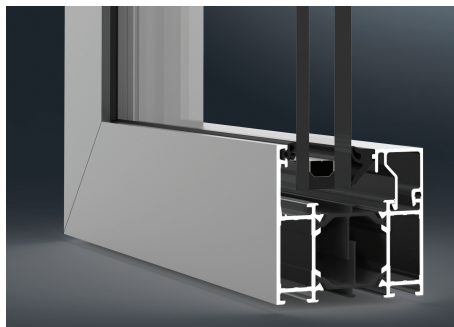


Air Leakage

ASTM E283-04

0.01 cfm/ft² - Prior to the cycles
0.01 cfm/ft² - After cycling
0.01 cfm/ft² - After Design Load
0.10 cfm/ft² - Allowed @ 6.27 PSF

SYSTEM CROSS-SECTION





GUTMANN
Innovative
technology
at the
highest level

**BECOME A GUTMANN PARTNER AND
ENJOY THE FOLLOWING ADVANTAGES:**

- › Many years of experience and expertise in façade business
- › We offer you everything from a single source: structural engineering advice in design and planning phase of a building, as well as support in the implementation of existing system technology with special system-based solutions
- › Top quality products are our trademark and basis of our reputation
- › High storage capacity and efficient logistics ensure fast and punctual delivery
- › Maximum customer benefit characterized by a successful combination of sophisticated design, certified safety, and sustainable profitability



GUTMANN NORTH AMERICA
Suite 200, 2020 Winston Park Dr
Oakville, ON, L6H 6X7, Canada
T: (416) 488 6266

www.gutmann-na.com