



GUTMANN SKYLIGHT

Curtain Wall System



GUTMANN
New dimensions
offer new
perspectives

ALUMINUM SHAPED BY GUTMANN



GUTMANN SKYLIGHT ALUMINUM FACADE

Innovative technology at its peak, with greater design and constructive flexibility

The GUTMANN Skylight System fulfills all the architectural requirements. GUTMANN provides an innovative system solution with a competitive edge in technology and cost-effectiveness.

The GUTMANN Skylight System provides high-quality products, fast installation, simplified fabrication, superior performance, and design flexibility.

SYSTEM DESCRIPTION

- › Narrow 2" (50mm) and 2 3/8" (60mm) sightline
- › Option of capped and structural silicone glazing
- › Accommodates slope between 10° and 50°
- › Various system depths to suit most design and load requirements
- › Identical widths of inner glass gaskets at mullions and transoms
- › Accepts 1 7/8" (48mm) sealed glazing units for canopy applications
- › Concealed fastener joinery creates a smooth, monolithic appearance
- › Different colour options are available
- › Proprietary gasket supplies improved thermal performance
- › Tested to AAMA and ASTM standards

Our in-house design assistance, engineering, and manufacturing ensure maximum efficiency throughout the entire process.

SYSTEM PROPERTIES



Air Infiltration

ASTM E283/E283M-19

0.01 cfm/ft² @ 6.24 PSF (300Pa)



Structural Performance

ASTM E330

up to +/-60 PSF (+/-2880Pa)



Water Penetration

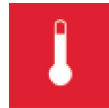
ASTM E331-00 AAMA 501.1-17

DYNAMIC

15 PSF (720Pa)

STATIC

15 PSF (720Pa)

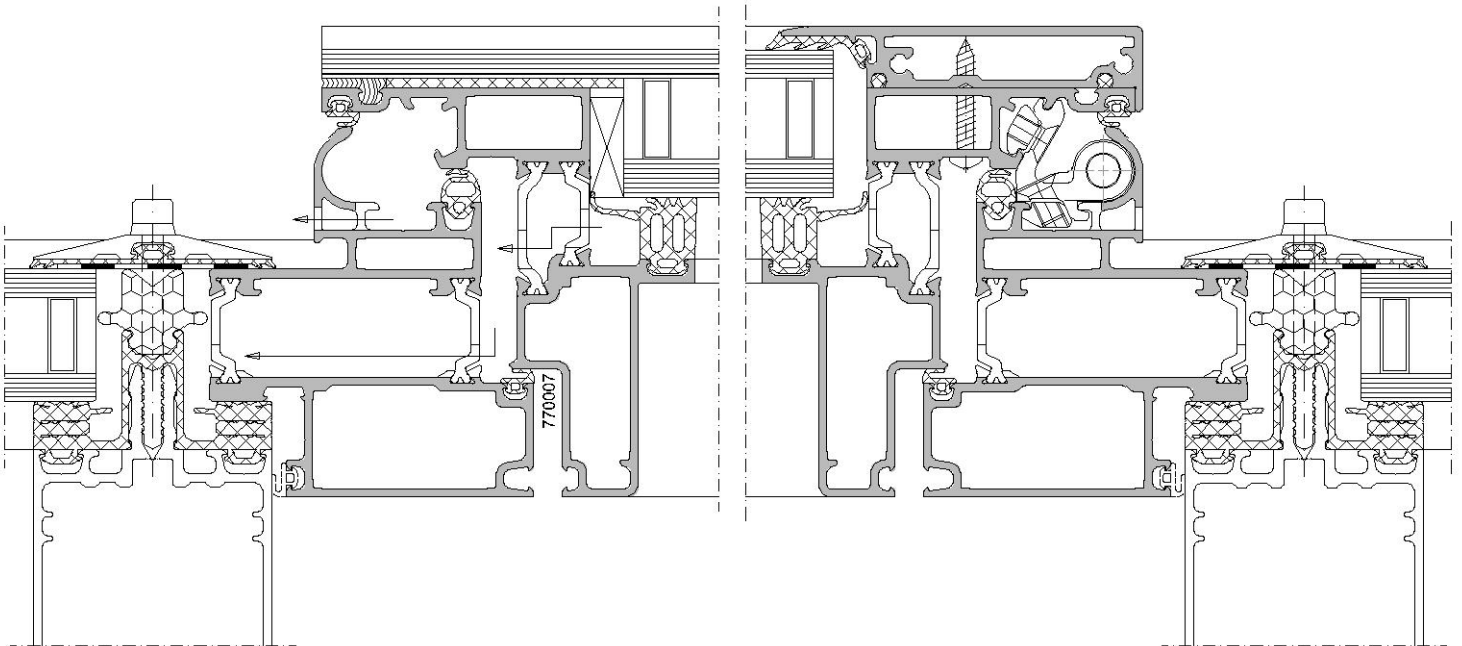


Thermal Transmittance (U-Factor)

NFRC 100

0.18 (DG)-COG-0.10 with Aluminum Spacer This value may vary according to glass choice, framing configuration, and spandrel to vision ratios.

SYSTEM CROSS-SECTION





GUTMANN
Innovative
technology
at the
highest level

**BECOME A GUTMANN PARTNER AND
ENJOY THE FOLLOWING ADVANTAGES:**

- › Many years of experience and expertise in façade business
- › We offer you everything from a single source: structural engineering advice in design and planning phase of a building, as well as support in the implementation of existing system technology with special system-based solutions
- › Top quality products are our trademark and basis of our reputation
- › High storage capacity and efficient logistics ensure fast and punctual delivery
- › Maximum customer benefit characterized by a successful combination of sophisticated design, certified safety, and sustainable profitability



GUTMANN NORTH AMERICA
Suite 200, 2020 Winston Park Dr
Oakville, ON, L6H 6X7, Canada
T: (416) 488 6266

www.gutmann-na.com