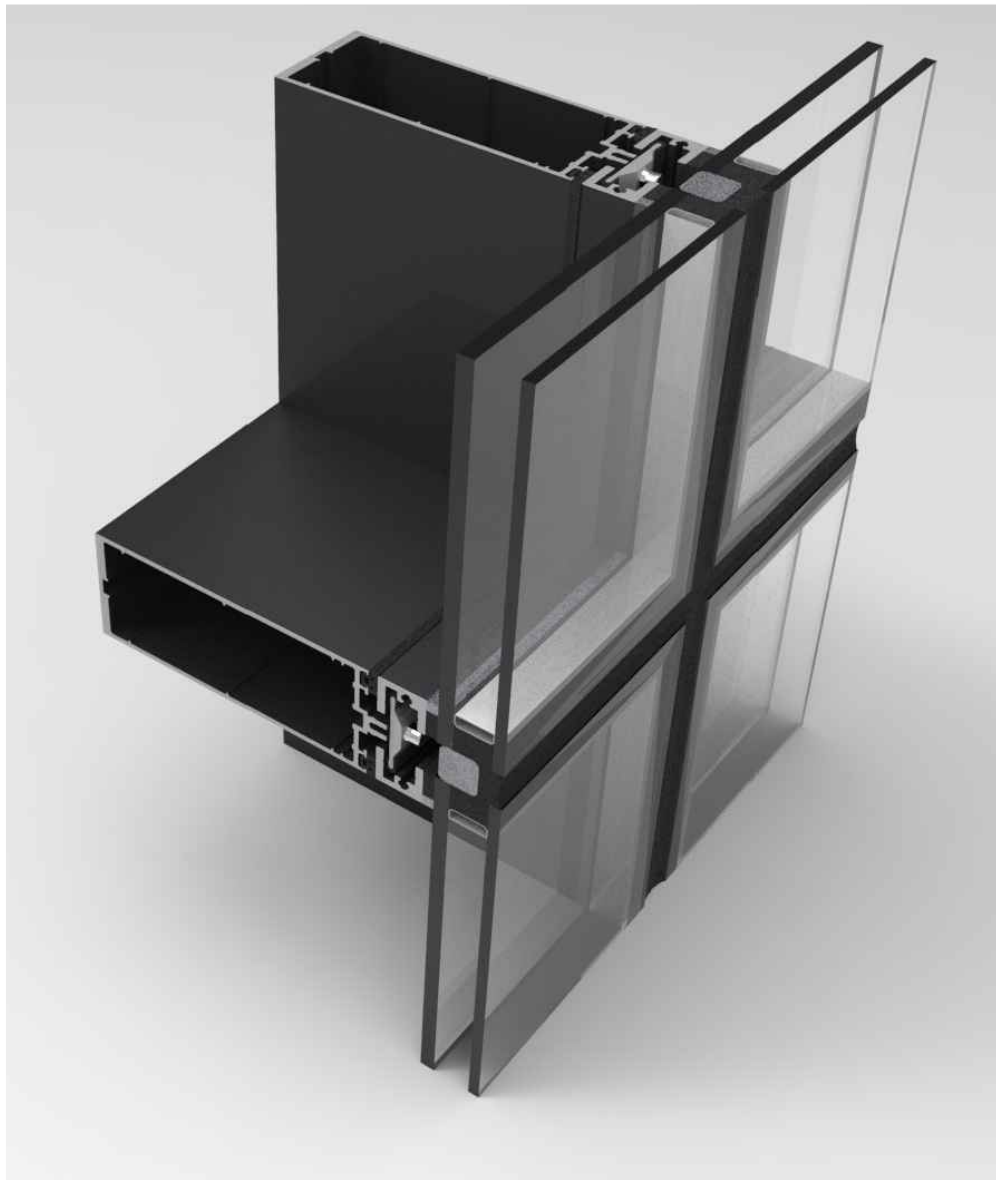




ALUMINIUM SHAPED BY GUTMANN

GUTMANN F60 Cassette System

BUILDING SYSTEMS	ALUMINIUM STICK CURTAIN WALL	CATALOGUE	01.2021 REV - 00
------------------	------------------------------	-----------	---------------------

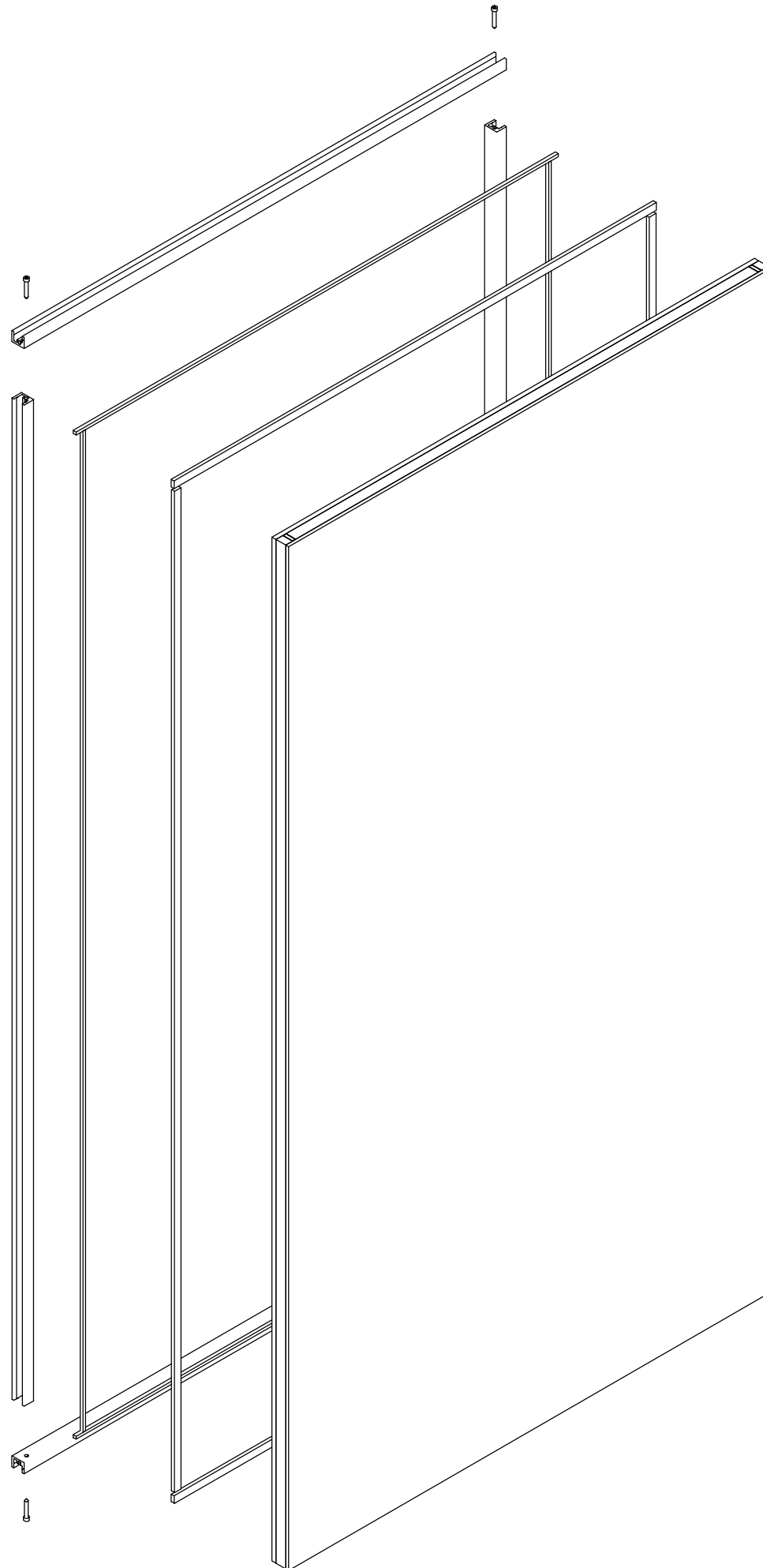


gutmann.de
gutmann.ae
gutmann-na.com

GUTMANN SYSTEMS NORTH AMERICA

gutmann-group.com

Cassette System ASSEMBLY INSTRUCTION FOR CASSETTE FRAME



1. Apply Sealant to the Framing Members

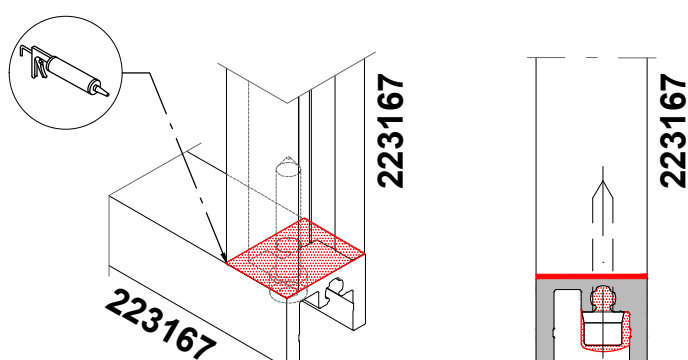
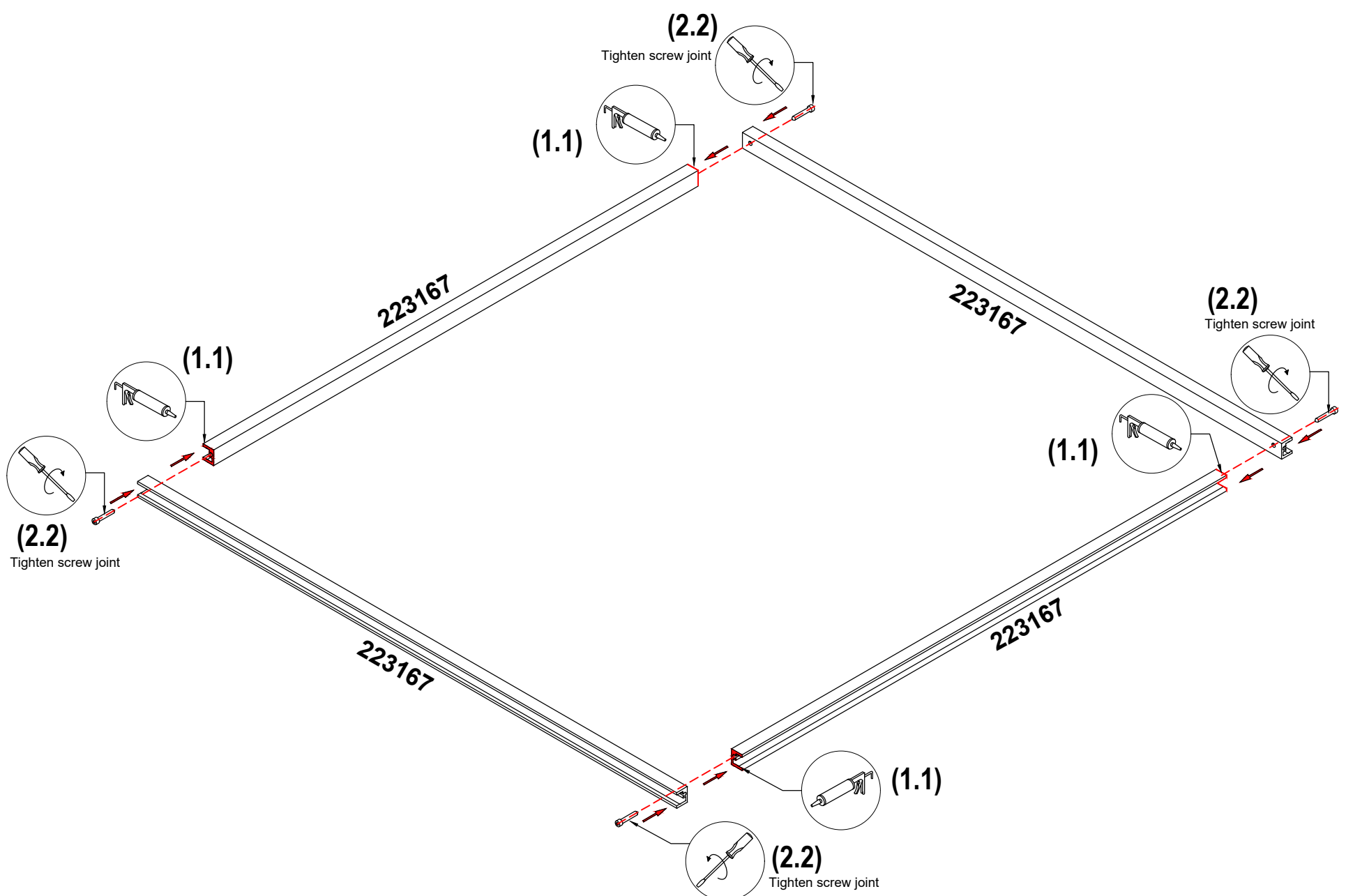
1.1 Clean, prime and apply sealant to the top and bottom of vertical members **223260**

2. Attach Horizontal and Vertical Members

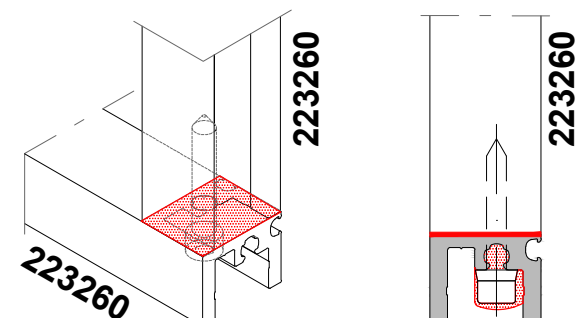
2.1 Position the vertical members so that they align with the screw ports of the horizontal members.

2.2 Assemble the items with the needed fasteners 815532.

2.3 Apply sealant to the heads of the fasteners. Then wipe off the excess sealant from vertical members, and in the head of the fasteners.



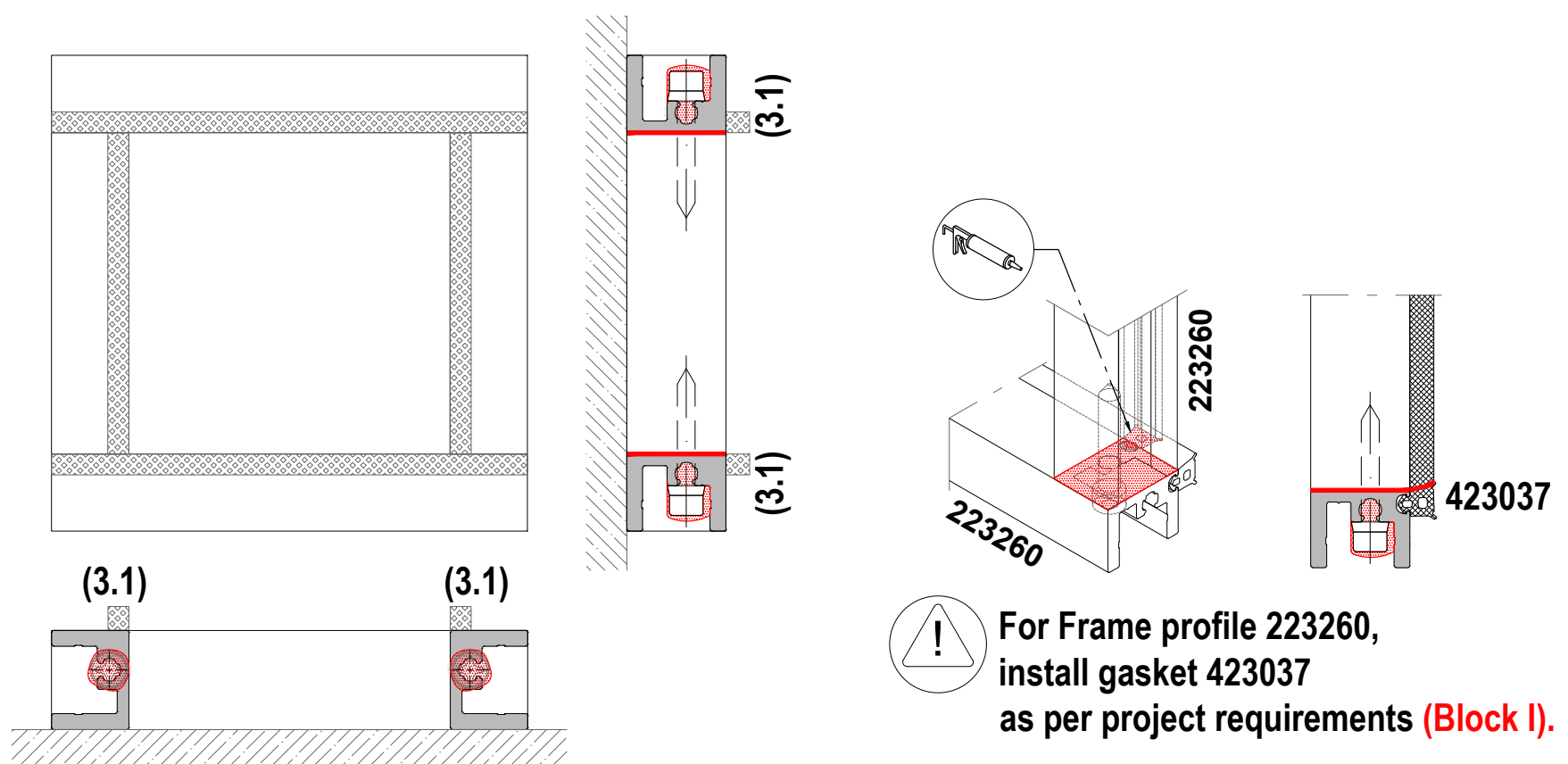
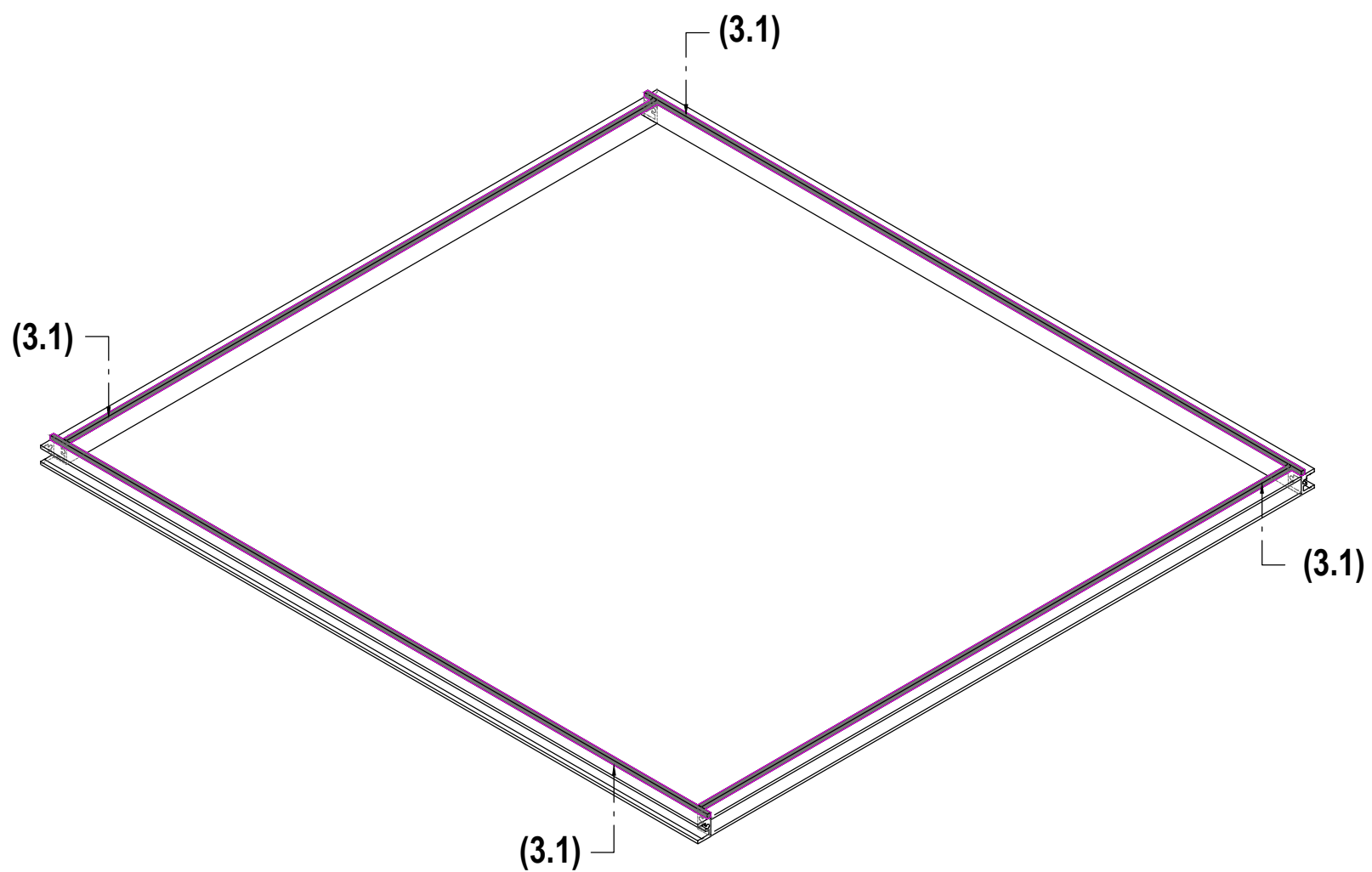
Surfaces at each corner must be straight and flush. If not flush, adjust to have flat surface in corners joints then fixing the fasteners.



Optional Frame profile 223260 as per project requirements **(Block I)**.

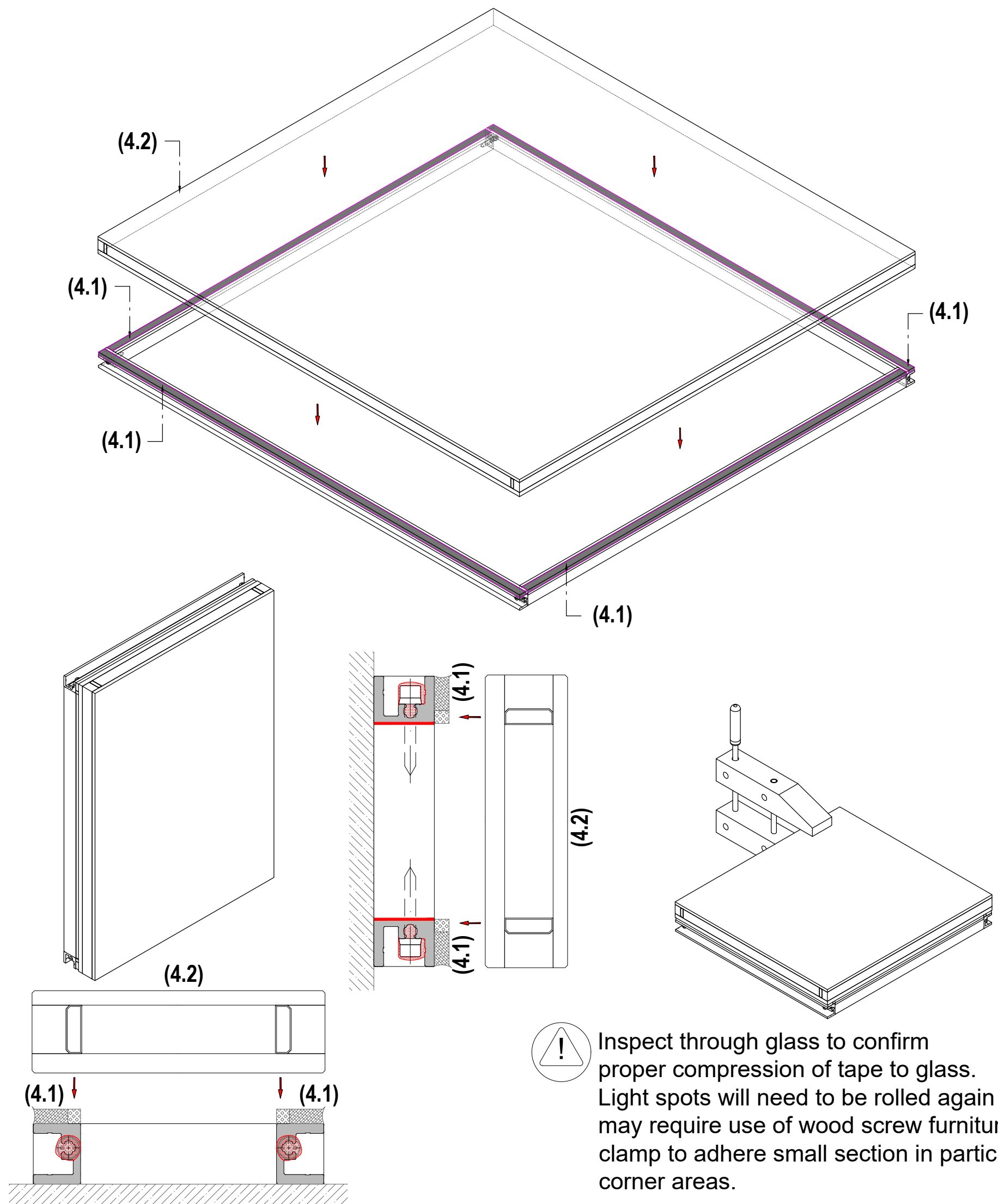
3. Apply Double Adhesive Tape

3.1 Apply the double adhesive tape in preparation for the glass installation.

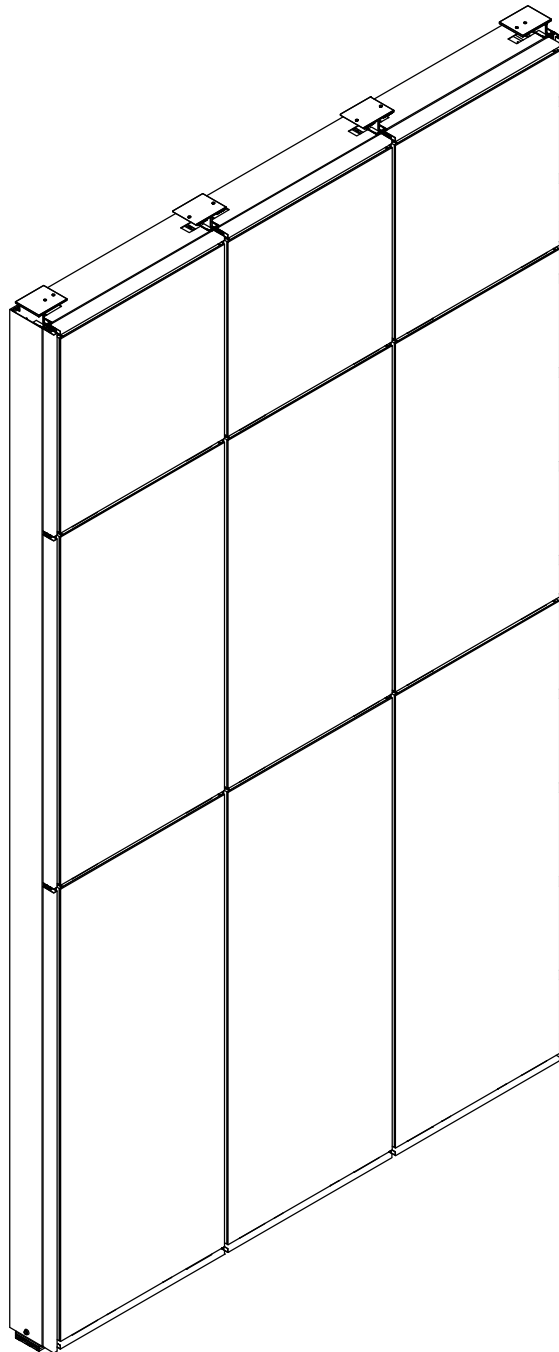


4. Apply SSG Structural Bonding and Install Glass

- 4.1 Prior to applying the structural silicone, clean the surface and use approved primer as per silicone supplier recommendation.
- 4.2 Place glass to achieve the proper bite dimension on the frame
- 4.3 Apply an approved structural silicone . Use positive pressure to completely fill the space between the glass and mullion.



Cassette System INSTALLATION INSTRUCTION



Frame types / Anchoring Methods

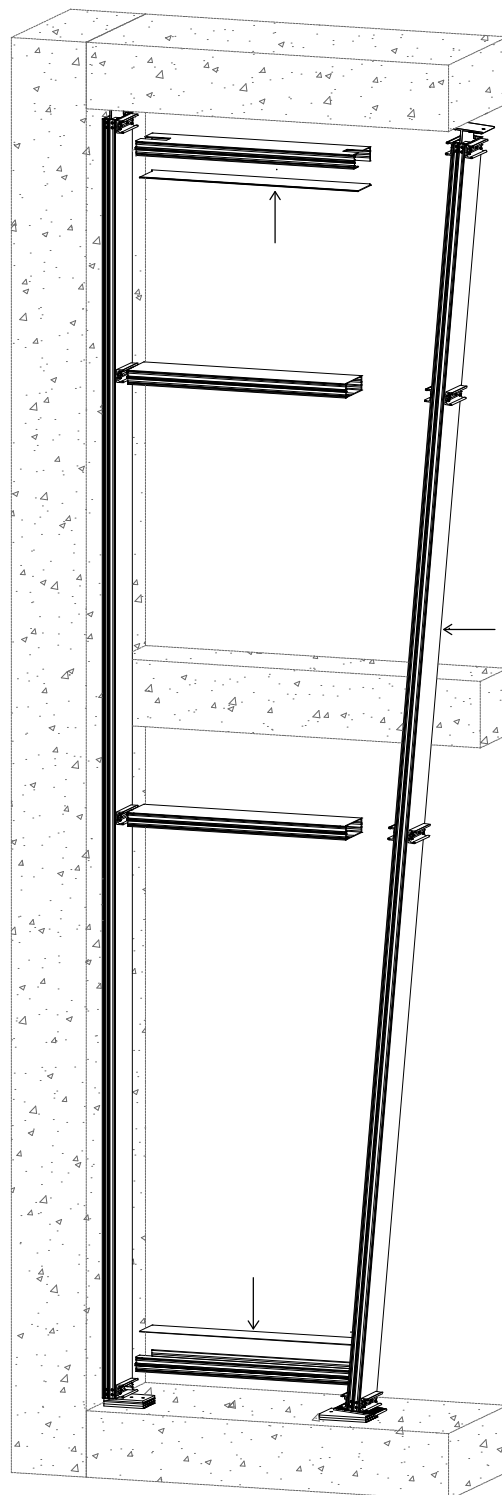
Mullions can be pre-assembled as ladders with shear blocks/connectors and shoe bracket/anchor as required in shop drawing.

Frame Members for Stick Build:

- Tubular horizontal members are used at all intermediate locations except at end bays.
- Notched back bottom transom and top transom are used at end bays to clear the shear blocks, and at head and sill to access "T" and "F" anchor bolts.

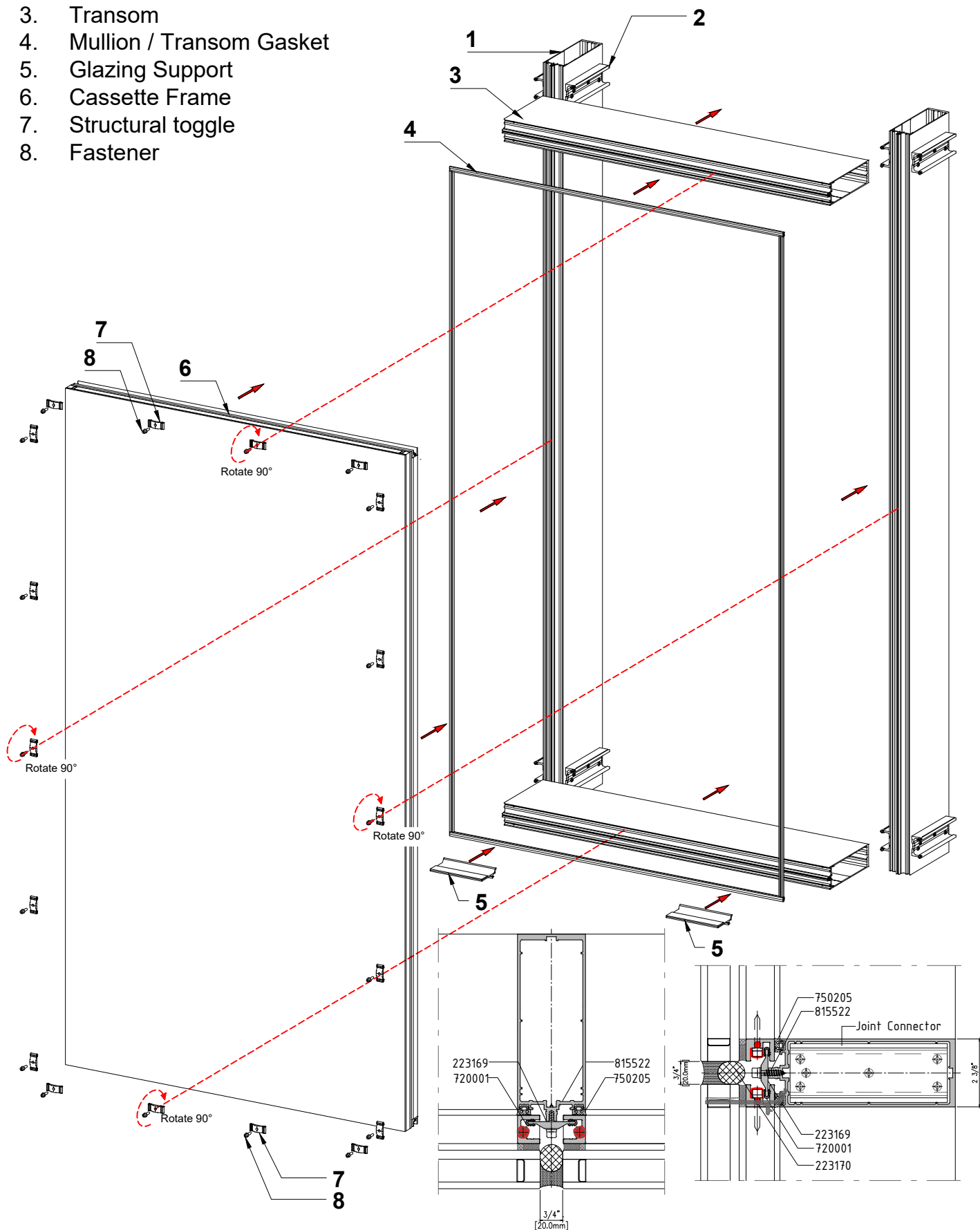
Note:

An option with snap cover is available at the top and bottom horizontal.



Cassette Frame Installation

1. Mullion
2. Joint Connector
3. Transom
4. Mullion / Transom Gasket
5. Glazing Support
6. Cassette Frame
7. Structural toggle
8. Fastener



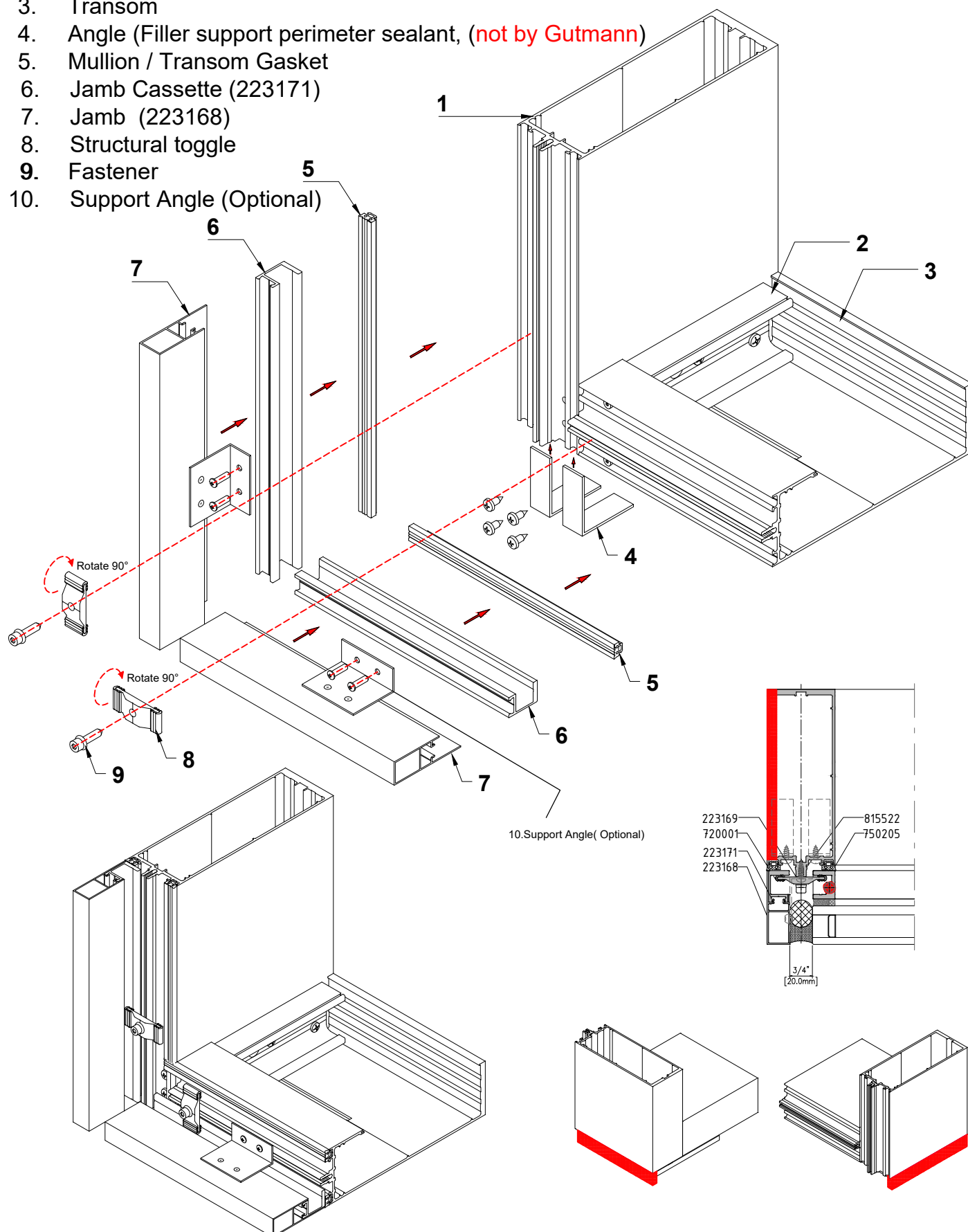
*Toggle spacing @10" center to center

PLAN VIEW

SECTION VIEW

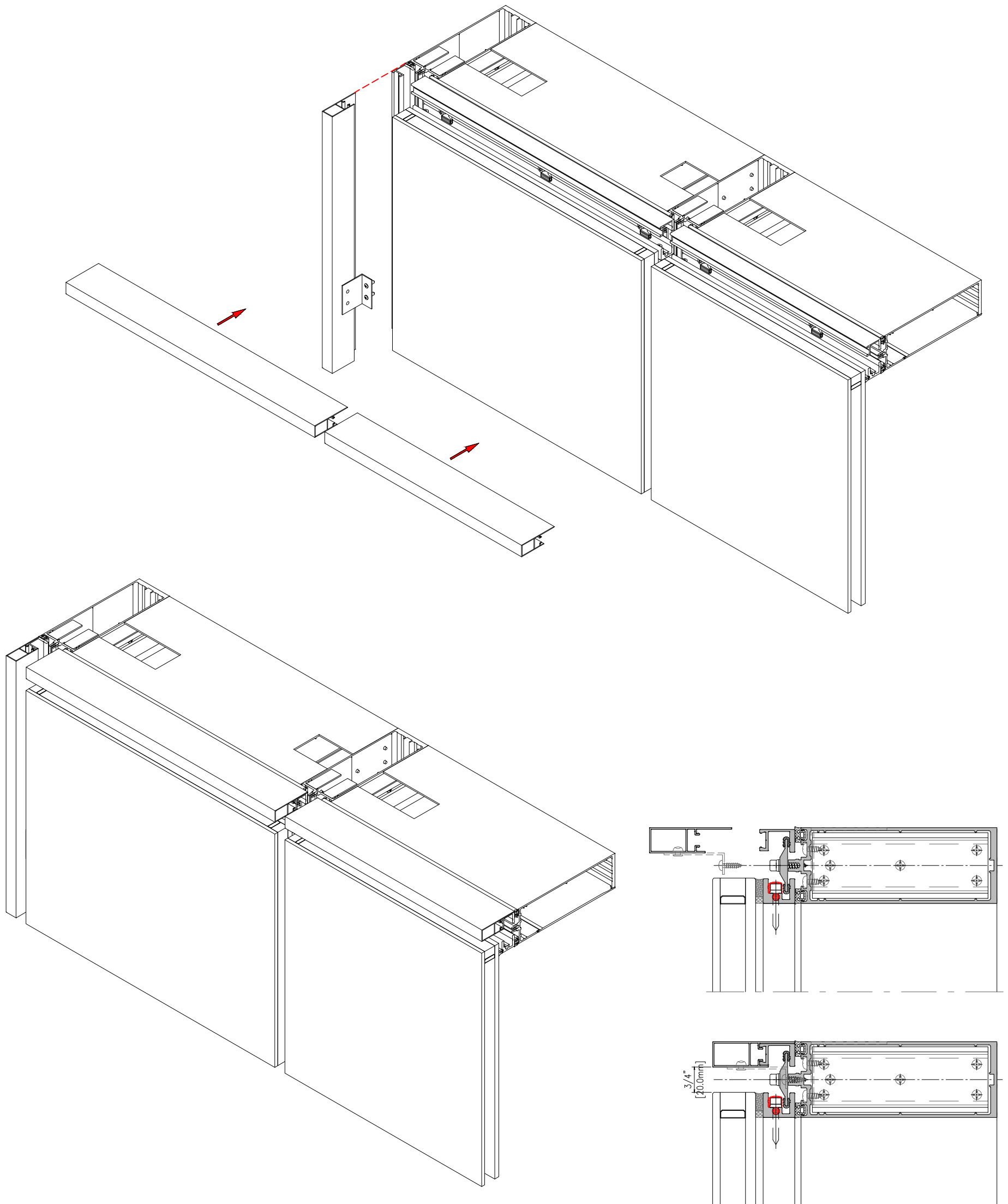
Perimeter Closure Assembly

1. Mullion
2. Joint Connector
3. Transom
4. Angle (Filler support perimeter sealant, **(not by Gutmann)**)
5. Mullion / Transom Gasket
6. Jamb Cassette (223171)
7. Jamb (223168)
8. Structural toggle
9. Fastener
10. Support Angle (Optional)



Cassette Frame Perimeter Closure Trim Installation

Option one: Jamb trim to cut each Joint



Cassette Frame Perimeter Closure Trim Installation

Option two: Trim Profile to be long extending for 6.0 m, notching required at mullion nosing for installation.

