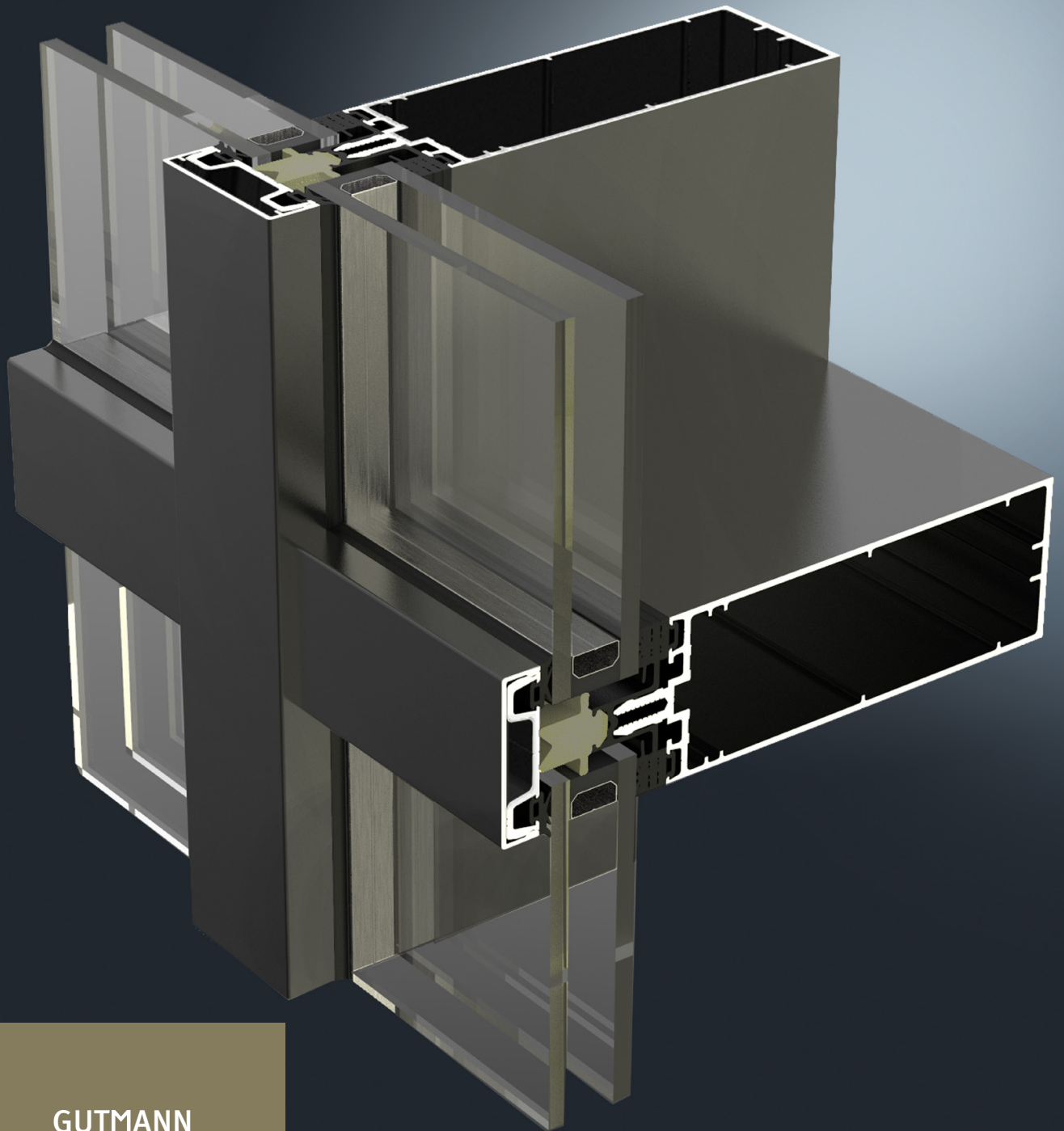




GUTMANN F50++

Curtain Wall Capped System



GUTMANN
New dimensions
offer new
perspectives

ALUMINUM SHAPED BY GUTMANN



GUTMANN F50++ ALUMINUM FACADE

Innovative technology at its peak, with greater design and constructive flexibility

The GUTMANN Curtain Wall System fulfills all the architectural requirements. GUTMANN is an innovative system solution with a competitive edge in technology and cost-effectiveness.

The GUTMANN Curtain Wall System F50++ provides high-quality products, fast installation, simplified fabrication, superior performance, and design flexibility. This system is applicable in sloped and vertical curtain wall systems.

SYSTEM DESCRIPTION

- › Identical profiles for mullion and transom, straight cutting, with no transom profile notching for the system results in minimal off-cuts, as well as efficient manufacturing and installation
- › Narrow 2" (50mm) sightline
- › Various system depths to suit most design and load requirements
- › Identical widths of inner glass gaskets at mullions and transoms
- › The system is outside pressure glazed, available with captured or SSG and 2 way structural glazing
- › Controlled drainage system via a special transom and mullion gasket
- › Transom connector for simple and secure transom connection
- › Different options of joint connectors
- › Glazing options of $1\frac{5}{16}" - 2\frac{1}{2}"$ (24mm-65mm) for double glazed and $\frac{3}{8}" - \frac{7}{8}"$ (10mm-22mm) for the single glass option
- › Maximum glass loads up to 400-730 kg, depending on wind loads
- › Proprietary gasket supplies improved thermal performance
- › Can be used for vertical and sloped curtain wall system
- › Different colour options are available
- › Tested to AAMA, ASTM, and CSA standards

Our in-house design assist, engineering, and manufacturing ensure maximum efficiency throughout the entire process.

SYSTEM PROPERTIES



Air Infiltration

ASTM E283/E283m-19

0.01 cfm/ft² @ 6.24 PSF (300pa)



Structural Performance

ASTM E330

up to +60psf (+2880Pa)



Water Penetration

ASTM E331

AAMA 501.1-17

DYNAMIC

15 psf (720 Pa)

STATIC

15 psf (720 Pa)



Thermal Transmittance (U-Factor)

NFRC 100

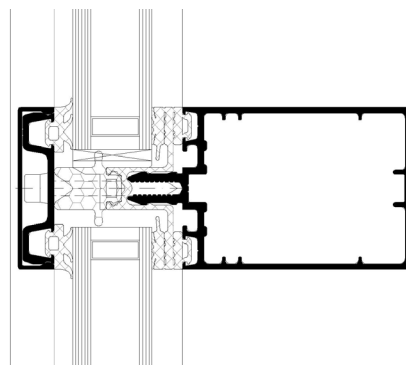
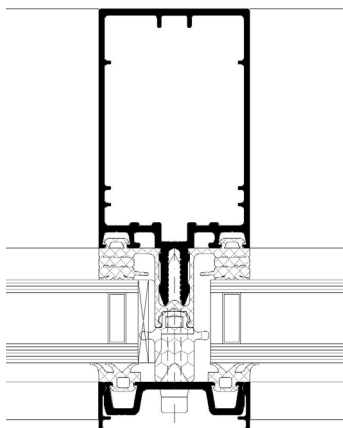
0.18 (DG)-COG-0.10 with Aluminum Spacer

This value may vary according to glass choice, framing configuration, and spandrel to vision ratios.

OPTIONAL FEATURES

- › Captured system heavy-weight mullion available for 2" x 7 $1\frac{1}{16}"$ (50 mm x 195mm) system
- › The captured system integrates with standard GUTMANN windows and doors
- › The captured system integrates with concealed GUTMANN Vent-SK70 and S70 Visible Framed Vents

SYSTEM CROSS-SECTION





GUTMANN
Innovative
technology
at the
highest level

**BECOME A GUTMANN PARTNER AND
ENJOY THE FOLLOWING ADVANTAGES:**

Industry Expertise: With extensive experience, we stand as a leader in the façade business, showcasing deep industry knowledge and understanding.

Comprehensive Solutions: From structural engineering consulting to implementing advanced system technology, we tailor end-to-end solutions for your unique project requirements.

Quality Commitment: Our reputation in the aluminum industry is built on a steadfast commitment to delivering top-quality products.

Efficient Logistics: Backed by high storage capacity and streamlined logistics, we guarantee swift and punctual deliveries, enhancing overall project efficiency.

Customer-Centric Approach: Success is achieved through the seamless integration of sophisticated design, certified safety, and sustainable profitability, ensuring maximum customer satisfaction.



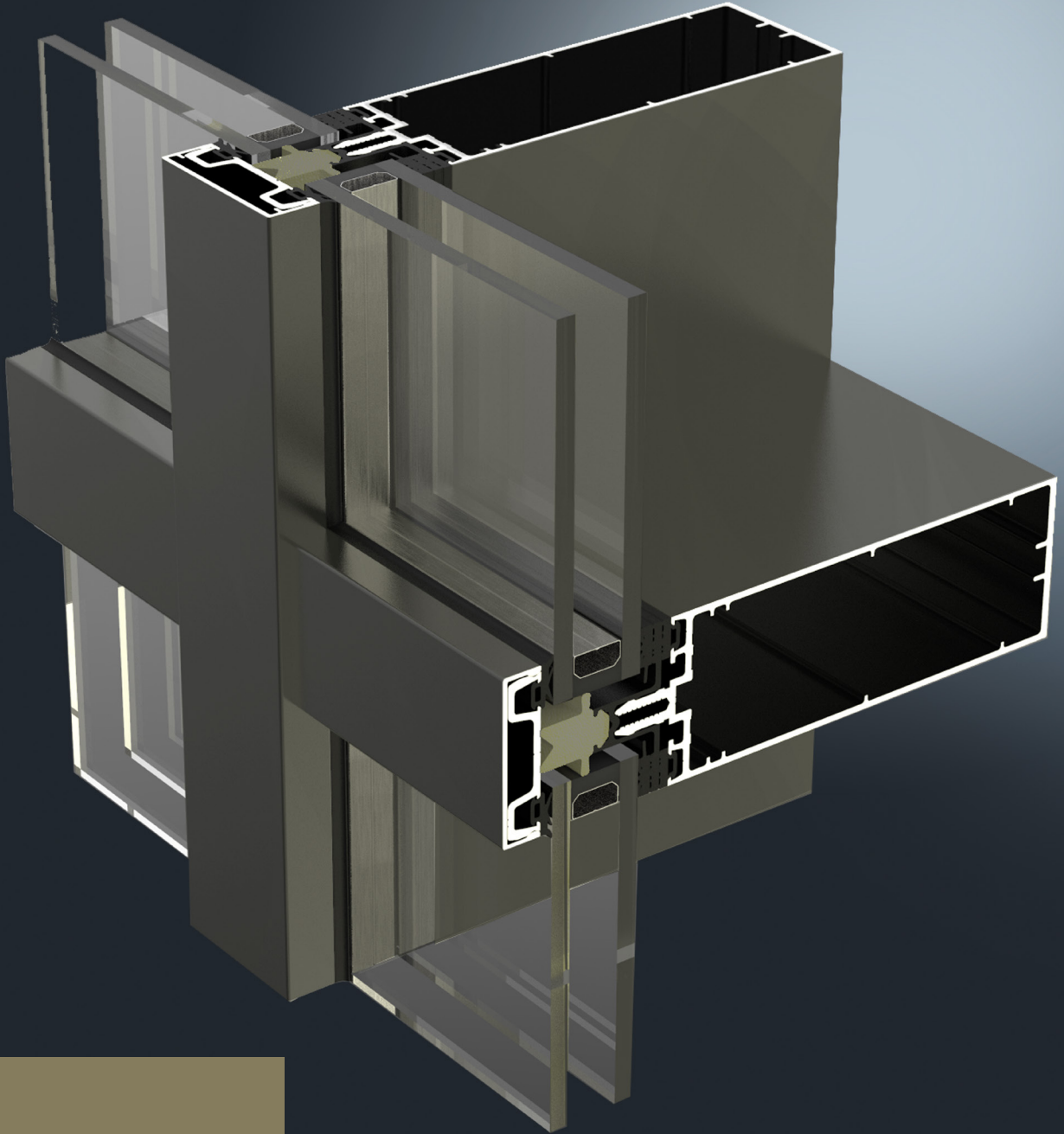
GUTMANN NORTH AMERICA
418 Iroquois Shore Rd | Suite 203,
L6H 0X7, Oakville, ON, Canada
T: + 1 (416) 488 6266

www.gutmann-na.com



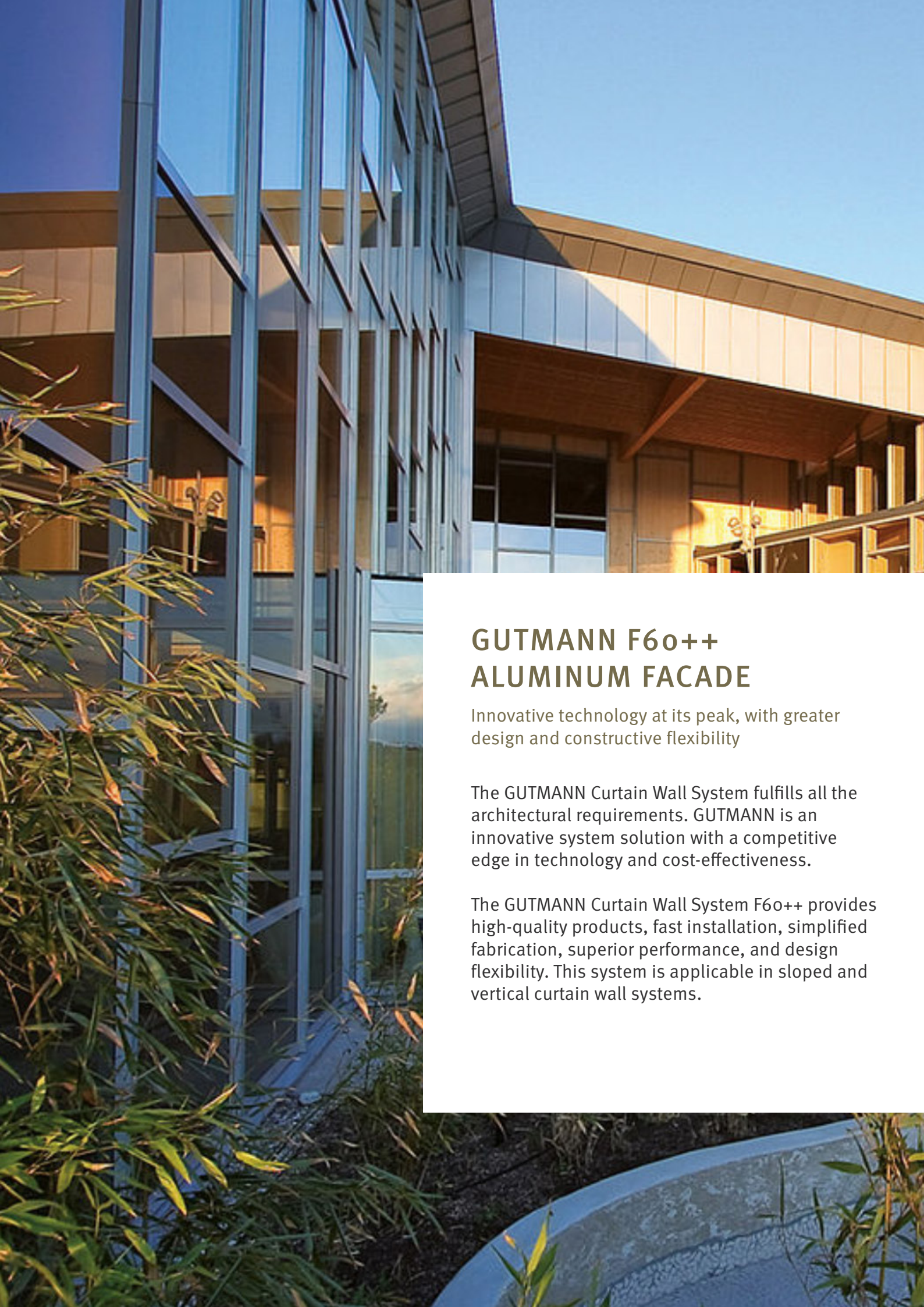
GUTMANN F60++

Curtain Wall Capped System



GUTMANN
New dimensions
offer new
perspectives

ALUMINUM SHAPED BY GUTMANN



GUTMANN F6o++ ALUMINUM FACADE

Innovative technology at its peak, with greater design and constructive flexibility

The GUTMANN Curtain Wall System fulfills all the architectural requirements. GUTMANN is an innovative system solution with a competitive edge in technology and cost-effectiveness.

The GUTMANN Curtain Wall System F6o++ provides high-quality products, fast installation, simplified fabrication, superior performance, and design flexibility. This system is applicable in sloped and vertical curtain wall systems.

SYSTEM DESCRIPTION

- › Identical profiles for mullion and transom, straight cutting, with no transom profile notching for the system results in minimal off-cuts, as well as efficient manufacturing and installation
- › Narrow 2 3/8" (60mm) sightline
- › Various system depths to suit most design and load requirements
- › Identical widths of inner glass gaskets at mullions and transoms
- › The system is outside pressure glazed, available with captured or SSG, and 2 way structural glazing
- › Controlled drainage system via a special transom and mullion gasket
- › Transom connector for simple and secure transom connection
- › Glazing options of 1"- 2 1/2" (26mm- 65mm) for double glazed and 3/8"- 7/8" (10mm-22mm) for the single glass option
- › Maximum glass loads up to 400-730 kg, depending on wind loads
- › Can be used for vertical and sloped curtain wall system
- › Offers integrated entrance framing systems and vents
- › Different colour options are available
- › Tested to AAMA, ASTM, and CSA standards

Our in-house design assist, engineering, and manufacturing ensure maximum efficiency throughout the entire process.

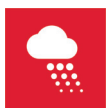
SYSTEM PROPERTIES



Air Infiltration
ASTM E283/E283m-19
0.01 cfm/ft². @ 6.24 psf (300 pa)



Structural Performance
ASTM E330
up to +/- 60psf (+/- 2880 pa)



Water Penetration
ASTM E331 AAMA 501.1-17
Static
15 psf (720 Pa)
Dynamic
15 psf (720 Pa)

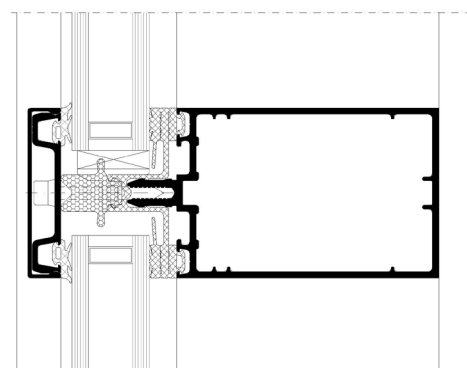
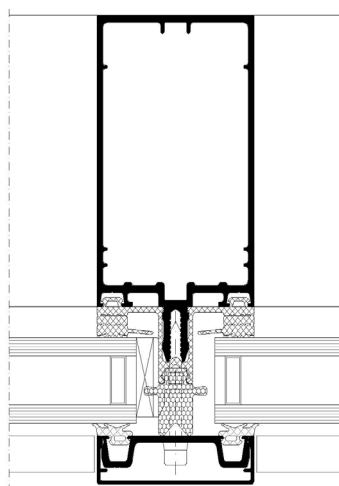


Thermal Transmittance (U-Factor)
NFRC 100
0.18 (DG)-COG-0.10 with Aluminum Spacer
This value may vary according to glass choice, framing configuration, and spandrel to vision ratios

OPTIONAL FEATURES

- › Captured system heavy-weight mullion available 2 3/8" x 8 7/16" (60mm x 215mm)
- › The captured system integrates with standard GUTMANN windows and doors
- › The captured system integrates with concealed GUTMANN Vent-SK70 and S70 visible framed vents

SYSTEM CROSS-SECTION





GUTMANN
Innovative
technology
at the
highest level

**BECOME A GUTMANN PARTNER AND
ENJOY THE FOLLOWING ADVANTAGES:**

Industry Expertise: With extensive experience, we stand as a leader in the façade business, showcasing deep industry knowledge and understanding.

Comprehensive Solutions: From structural engineering consulting to implementing advanced system technology, we tailor end-to-end solutions for your unique project requirements.

Quality Commitment: Our reputation in the aluminum industry is built on a steadfast commitment to delivering top-quality products.

Efficient Logistics: Backed by high storage capacity and streamlined logistics, we guarantee swift and punctual deliveries, enhancing overall project efficiency.

Customer-Centric Approach: Success is achieved through the seamless integration of sophisticated design, certified safety, and sustainable profitability, ensuring maximum customer satisfaction.



GUTMANN NORTH AMERICA
418 Iroquois Shore Rd | Suite 203,
L6H 0X7, Oakville, ON, Canada
T: + 1 (416) 488 6266

www.gutmann-na.com