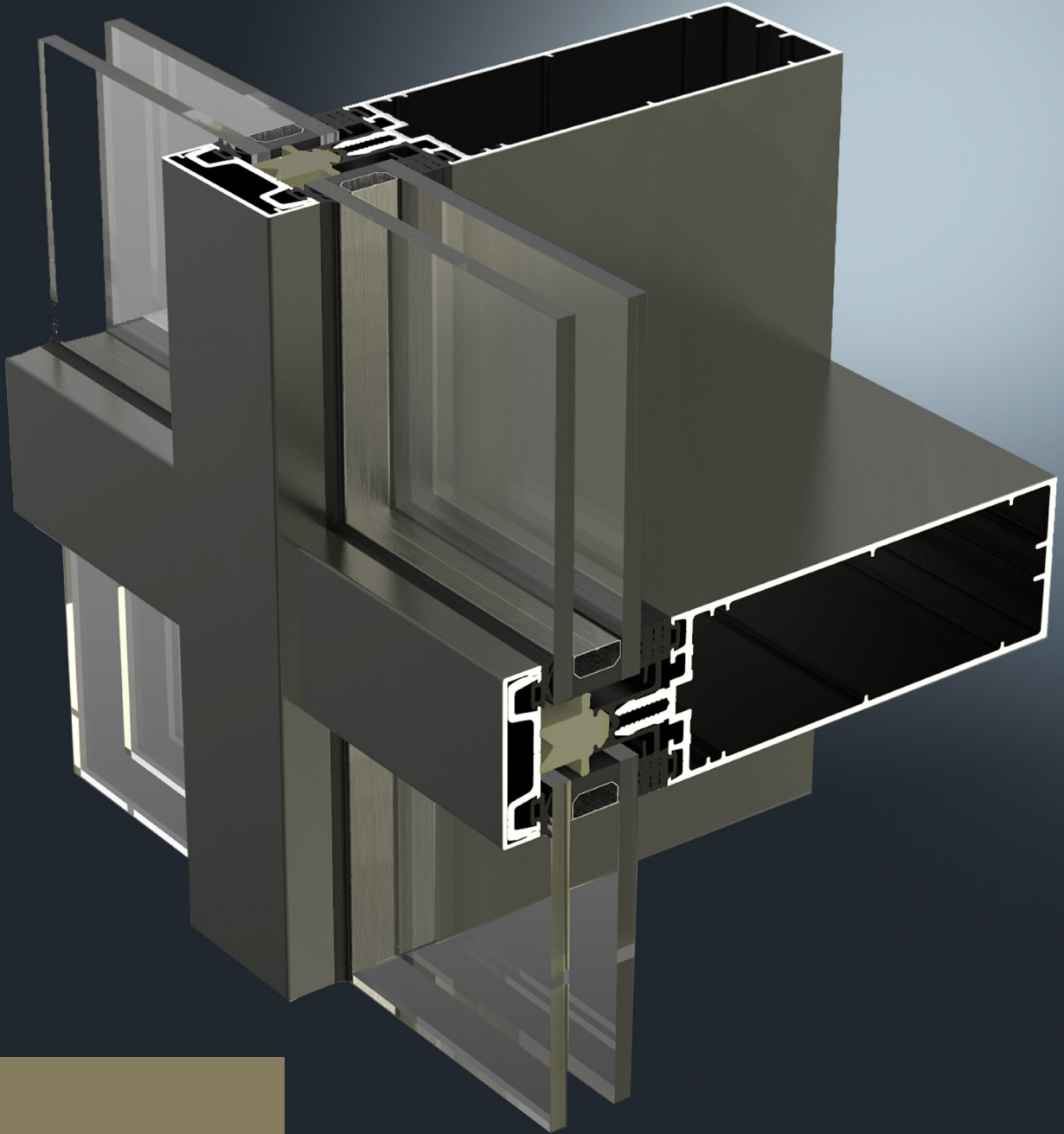




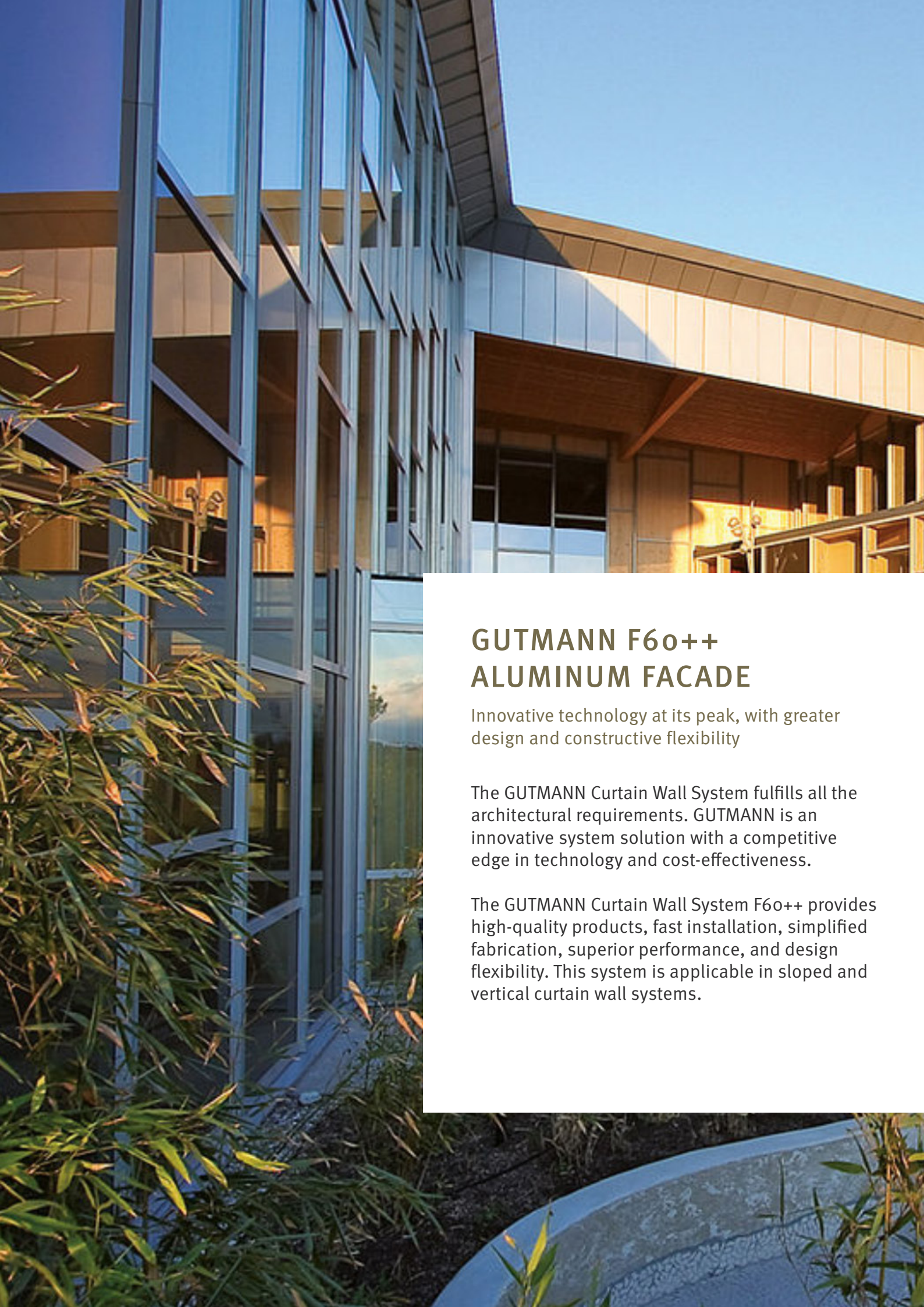
# GUTMANN F60++

Curtain Wall Capped System



**GUTMANN**  
New dimensions  
offer new  
perspectives

**ALUMINUM** SHAPED BY GUTMANN



## **GUTMANN F6o++ ALUMINUM FACADE**

Innovative technology at its peak, with greater design and constructive flexibility

The GUTMANN Curtain Wall System fulfills all the architectural requirements. GUTMANN is an innovative system solution with a competitive edge in technology and cost-effectiveness.

The GUTMANN Curtain Wall System F6o++ provides high-quality products, fast installation, simplified fabrication, superior performance, and design flexibility. This system is applicable in sloped and vertical curtain wall systems.



## SYSTEM DESCRIPTION

- › Identical profiles for mullion and transom, straight cutting, with no transom profile notching for the system results in minimal off-cuts, as well as efficient manufacturing and installation
- › Narrow 2 3/8" (60mm) sightline
- › Various system depths to suit most design and load requirements
- › Identical widths of inner glass gaskets at mullions and transoms
- › The system is outside pressure glazed, available with captured or SSG, and 2 way structural glazing
- › Controlled drainage system via a special transom and mullion gasket
- › Transom connector for simple and secure transom connection
- › Glazing options of 1"- 2 1/2" (26mm- 65mm) for double glazed and 3/8"- 7/8" (10mm-22mm) for the single glass option
- › Maximum glass loads up to 400-730 kg, depending on wind loads
- › Can be used for vertical and sloped curtain wall system
- › Offers integrated entrance framing systems and vents
- › Different colour options are available
- › Tested to AAMA, ASTM, and CSA standards

Our in-house design assist, engineering, and manufacturing ensure maximum efficiency throughout the entire process.

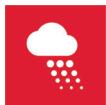
## SYSTEM PROPERTIES



Air Infiltration  
**ASTM E283/E283m-19**  
0.01 cfm/ft<sup>2</sup>. @ 6.24 psf (300 pa)



Structural Performance  
**ASTM E330**  
up to +/- 60psf (+/- 2880 pa)



Water Penetration  
**ASTM E331 AAMA 501.1-17**  
Static  
**15 psf (720 Pa)**  
Dynamic  
**15 psf (720 Pa)**

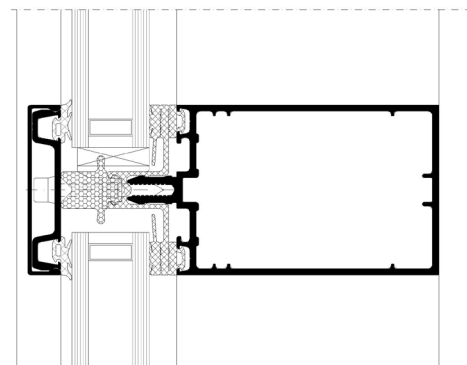
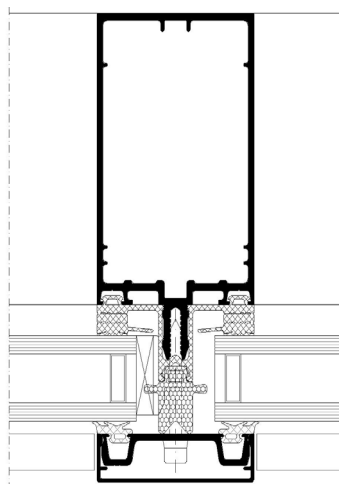


Thermal Transmittance (U-Factor)  
**NFRC 100**  
0.18 (DG)-COG-0.10 with Aluminum Spacer  
This value may vary according to glass choice, framing configuration, and spandrel to vision ratios

## OPTIONAL FEATURES

- › Captured system heavy-weight mullion available 2 3/8" x 8 7/16" (60mm x 215mm)
- › The captured system integrates with standard GUTMANN windows and doors
- › The captured system integrates with concealed GUTMANN Vent-SK70 and S70 visible framed vents

## SYSTEM CROSS-SECTION





**GUTMANN**  
Innovative  
technology  
at the  
highest level

**BECOME A GUTMANN PARTNER AND  
ENJOY THE FOLLOWING ADVANTAGES:**

**Industry Expertise:** With extensive experience, we stand as a leader in the façade business, showcasing deep industry knowledge and understanding.

**Comprehensive Solutions:** From structural engineering consulting to implementing advanced system technology, we tailor end-to-end solutions for your unique project requirements.

**Quality Commitment:** Our reputation in the aluminum industry is built on a steadfast commitment to delivering top-quality products.

**Efficient Logistics:** Backed by high storage capacity and streamlined logistics, we guarantee swift and punctual deliveries, enhancing overall project efficiency.

**Customer-Centric Approach:** Success is achieved through the seamless integration of sophisticated design, certified safety, and sustainable profitability, ensuring maximum customer satisfaction.



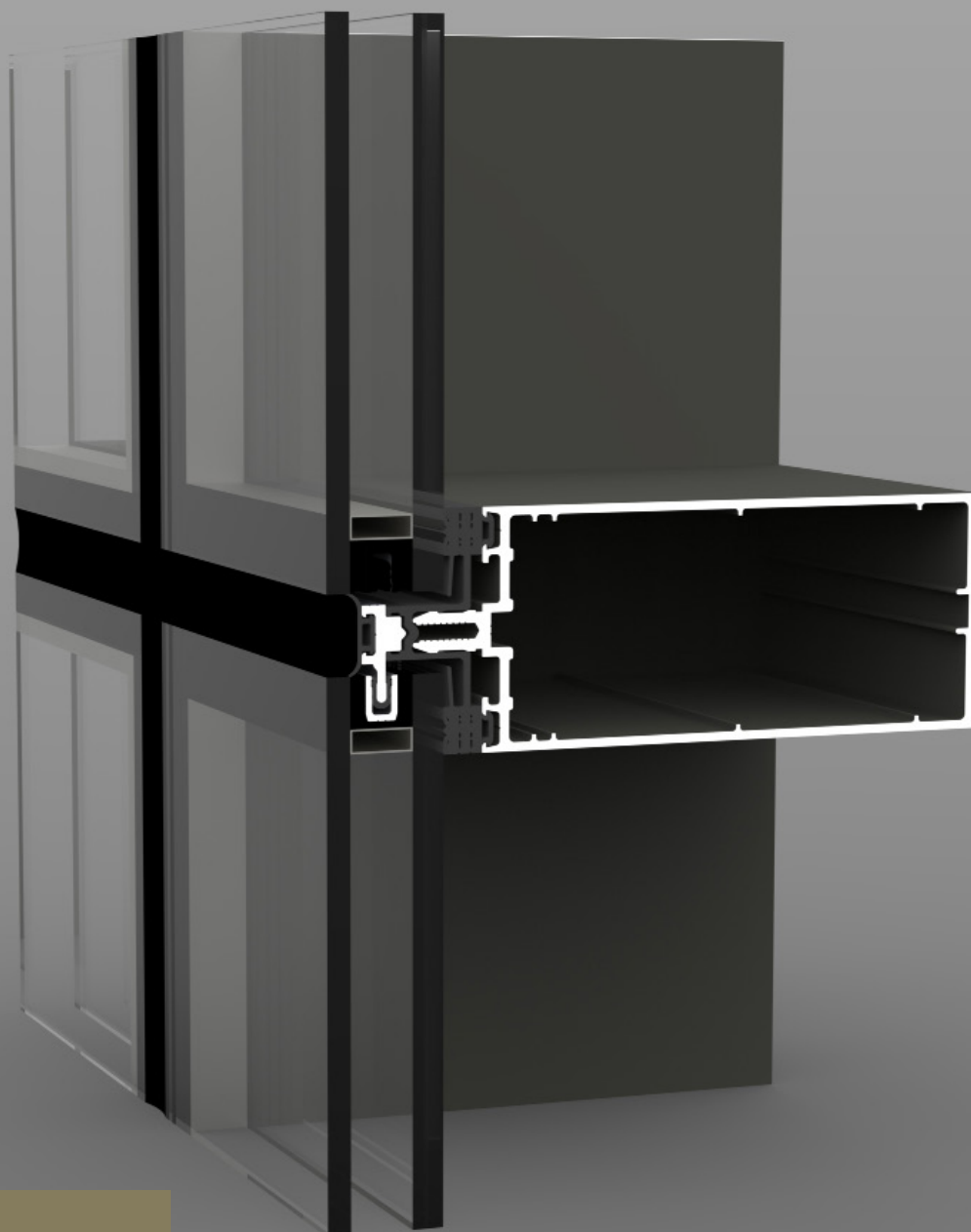
**GUTMANN NORTH AMERICA**  
418 Iroquois Shore Rd | Suite 203,  
L6H 0X7, Oakville, ON, Canada  
T: + 1 (416) 488 6266

[www.gutmann-na.com](http://www.gutmann-na.com)



# GUTMANN F60++

Curtain Wall SSG System



**GUTMANN**  
New dimensions  
offer new  
perspectives

**ALUMINUM** SHAPED BY GUTMANN





## GUTMANN F6o++ SSG ALUMINUM FACADE

Innovative technology at its peak, with greater design and constructive flexibility

The GUTMANN SSG or Toggle System provides a unique all-glass capless look in its F6o++ Curtain Wall System.

The GUTMANN Curtain Wall System F6o++ with Toggle System provides a four-sided structural silicone flat look in a stick system with an economical, quality curtain wall with quick deliveries, and easy installation. Various mullion depth profiles are available based on spans, loads, and project design. This system is applicable in sloped and vertical curtain wall systems.

## SYSTEM DESCRIPTION

- › Identical profiles for mullion and transom, straight cutting, with no transom profile notching for the system results in minimal off-cuts, as well as efficient manufacturing and installation
- › Available in structural silicone glazing and semi SSG
- › Narrow 2 3/8" (60mm) sightline
- › The curtain wall system is mechanically held by 4 sided toggles spaced as required to meet wind load
- › 13/16" (20mm) exterior vertical and horizontal weather seal sightline and 2" (50mm) interior metal sightline
- › Various system depths to suit most design and load requirements
- › Identical widths of inner glass gaskets at mullions and transoms
- › Controlled drainage system via a special transom and mullion gasket
- › Glazing options of 1"- 1 7/16" (26mm-36mm) for double glazed
- › Maximum glass loads up to 400-730 kg, depending on wind loads
- › Innovative toggle assembly captures glass, eliminating field application of structural silicone
- › Screw spline joinery method allows shop assembly of ladder sections, reducing field labour
- › Can be used for vertical and sloped curtain wall system
- › Different colour options are available
- › Tested to AAMA, ASTM, and CSA standards

## SYSTEM PROPERTIES



Air Infiltration  
**ASTM E283/E283m-19**  
0.01 cfm/ft<sup>2</sup>. @ 6.24 psf (300 pa)



Structural Performance  
**ASTM E330**  
up to +/- 60psf (+/- 2880 pa)



Water Penetration  
**ASTM E331 AAMA 501.1-17**  
Static  
**15 psf (720 Pa)**  
Dynamic  
**15 psf (720 Pa)**

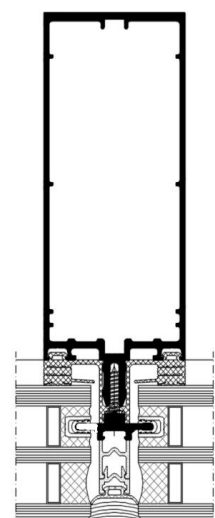
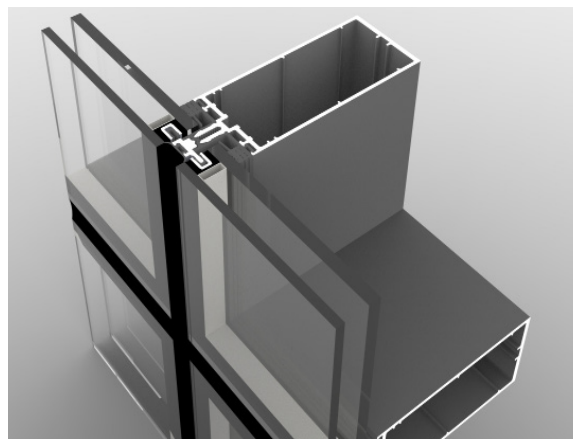
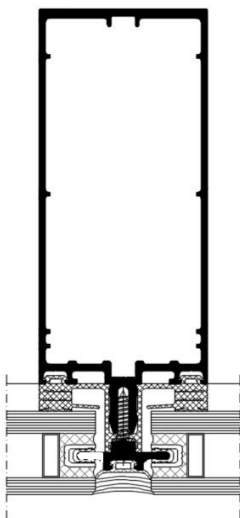


Thermal Transmittance (U-Factor)  
**NFRC 100**  
0.18 (DG)-COG-0.10 with Aluminum Spacer  
This value may vary according to glass choice, framing configuration, and spandrel to vision ratios.

## OPTIONAL FEATURES

- › SSG system heavy-weight mullion available 2 3/8" x 8 7/16" (60mm x 215mm)
- › SSG system integrates with standard GUTMANN windows and doors
- › SSG system integrates with concealed GUTMANN Vent-SK70

## SYSTEM CROSS-SECTION







**GUTMANN**  
Innovative  
technology  
at the  
highest level

**BECOME A GUTMANN PARTNER AND  
ENJOY THE FOLLOWING ADVANTAGES:**

**Industry Expertise:** With extensive experience, we stand as a leader in the façade business, showcasing deep industry knowledge and understanding.

**Comprehensive Solutions:** From structural engineering consulting to implementing advanced system technology, we tailor end-to-end solutions for your unique project requirements.

**Quality Commitment:** Our reputation in the aluminum industry is built on a steadfast commitment to delivering top-quality products.

**Efficient Logistics:** Backed by high storage capacity and streamlined logistics, we guarantee swift and punctual deliveries, enhancing overall project efficiency.

**Customer-Centric Approach:** Success is achieved through the seamless integration of sophisticated design, certified safety, and sustainable profitability, ensuring maximum customer satisfaction.



**GUTMANN NORTH AMERICA**  
418 Iroquois Shore Rd | Suite 203,  
L6H 0X7, Oakville, ON, Canada  
T: + 1 (416) 488 6266

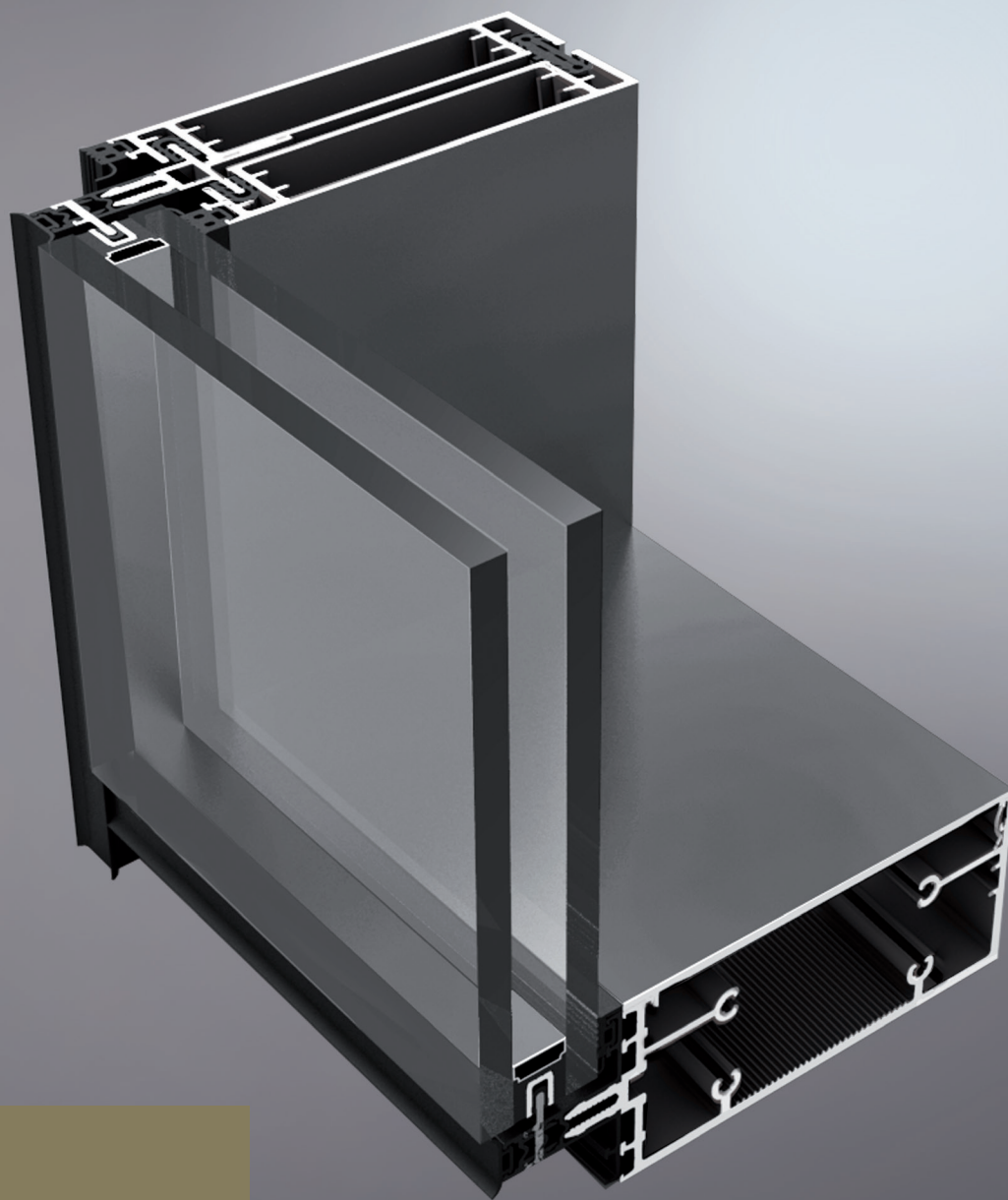
[www.gutmann-na.com](http://www.gutmann-na.com)





# GUTMANN F60++

Curtain Wall Split Systems



**GUTMANN**  
New dimensions  
offer new  
perspectives

**ALUMINUM** SHAPED BY GUTMANN



## GUTMANN F60++ SPLIT ALUMINUM FACADE

Innovative technology at its peak, with greater design and constructive flexibility

The GUTMANN Curtain Wall System fulfills all the architectural requirements. GUTMANN is an innovative system solution with a competitive edge in technology and cost-effectiveness.

The GUTMANN Curtain Wall System F60++ provides high-quality products, fast installation, simplified fabrication, superior performance, and design flexibility.



## SYSTEM DESCRIPTION

- › Narrow 2 3/8" (60mm) sightline
- › The system is outside pressure glazed, available with captured or SSG, and 2 way structural glazing
- › The straight cutting of this system features no transom profile notching resulting in minimal off-cuts, as well as efficient manufacturing and installation
- › Various system depths to suit most design and load requirements
- › Identical widths of inner glass gaskets at mullions and transoms
- › The system is outside glazed, available with captured or SSG mullions
- › Controlled drainage and ventilation system via a special transom gasket
- › Glass option of 15/16" - 2 1/2" (24mm- 65mm) insulating glass and 3/8" - 7/8" (10mm-22mm) for single glazed
- › Maximum glass loads up to 400-730 kg, depending on wind loads
- › Corner mullions available
- › Different colour options are available
- › Proprietary gasket supplies improved thermal performance
- › Tested to AAMA, ASTM, and CSA standards

## SYSTEM PROPERTIES



Air Infiltration

**ASTM E283**

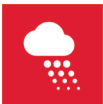
0.01 cfm/ft2. @ 6.24 psf (300 pa)



Structural Performance

**ASTM E330**

up to +/- 60psf (+/- 2880 pa)



Water Penetration

**ASTM E331 ASTM 501.1-17**

Static

**15 psf (720 Pa)**

Dynamic

**15 psf (720 Pa)**



Thermal Transmittance (U-Factor)

**NFRC 100**

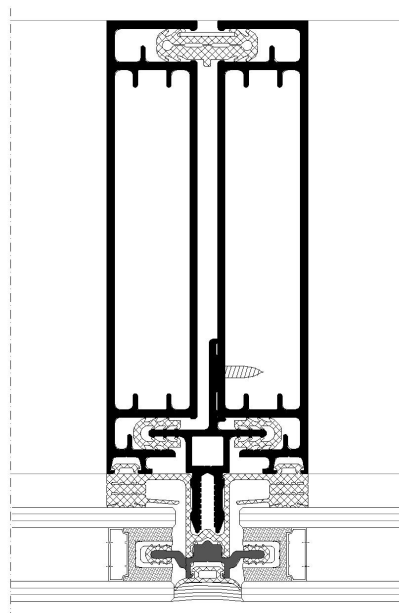
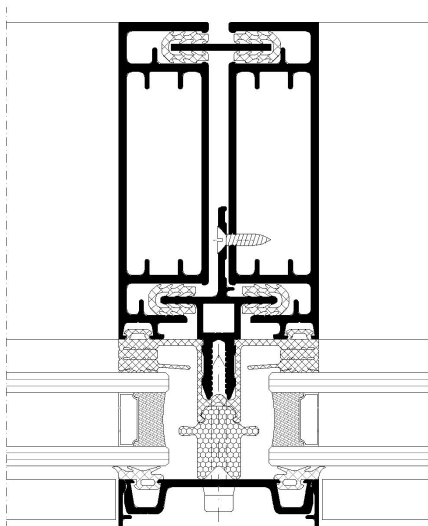
0.18 (DG)-COG-0.10 with Aluminum Spacer

This value may vary according to glass choice, framing configuration, and spandrel to vision ratios

## OPTIONAL FEATURES

- › Split system has heavy-weight mullion available 2- 3/8" x 6 1/8" (60 mm x 155 mm) system integrates with standard GUTMANN windows and doors

## SYSTEM CROSS-SECTION





**GUTMANN**  
Innovative  
technology  
at the  
highest level

**BECOME A GUTMANN PARTNER AND  
ENJOY THE FOLLOWING ADVANTAGES:**

**Industry Expertise:** With extensive experience, we stand as a leader in the façade business, showcasing deep industry knowledge and understanding.

**Comprehensive Solutions:** From structural engineering consulting to implementing advanced system technology, we tailor end-to-end solutions for your unique project requirements.

**Quality Commitment:** Our reputation in the aluminum industry is built on a steadfast commitment to delivering top-quality products.

**Efficient Logistics:** Backed by high storage capacity and streamlined logistics, we guarantee swift and punctual deliveries, enhancing overall project efficiency.

**Customer-Centric Approach:** Success is achieved through the seamless integration of sophisticated design, certified safety, and sustainable profitability, ensuring maximum customer satisfaction.



**GUTMANN NORTH AMERICA**  
418 Iroquois Shore Rd | Suite 203,  
L6H 0X7, Oakville, ON, Canada  
T: + 1 (416) 488 6266

[www.gutmann-na.com](http://www.gutmann-na.com)