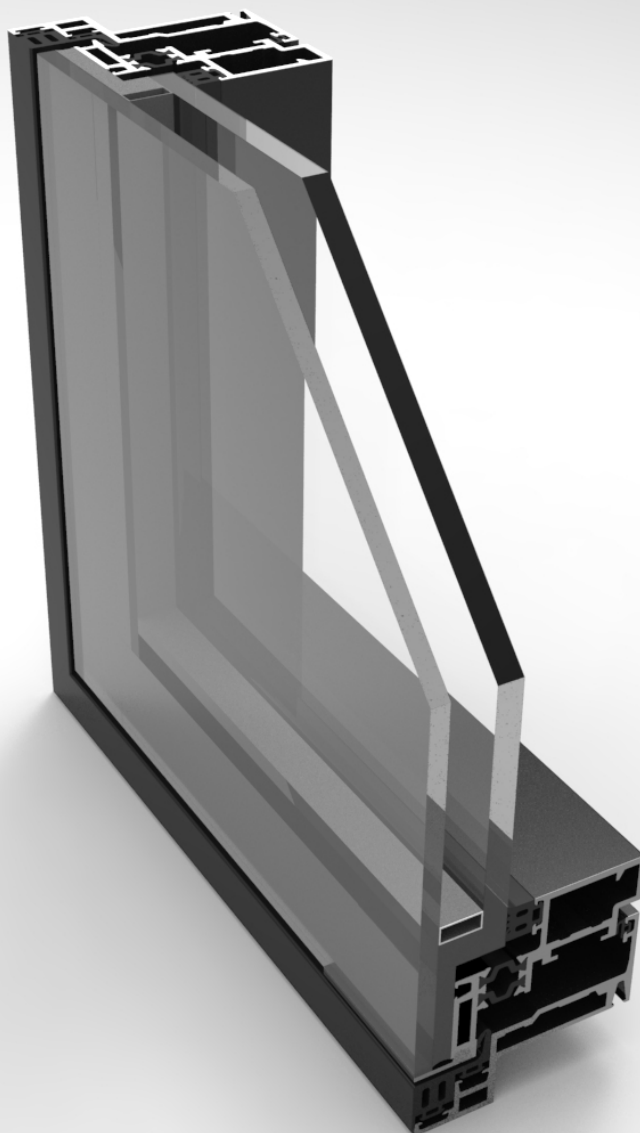


GUTMANN S70 SK SYSTEM

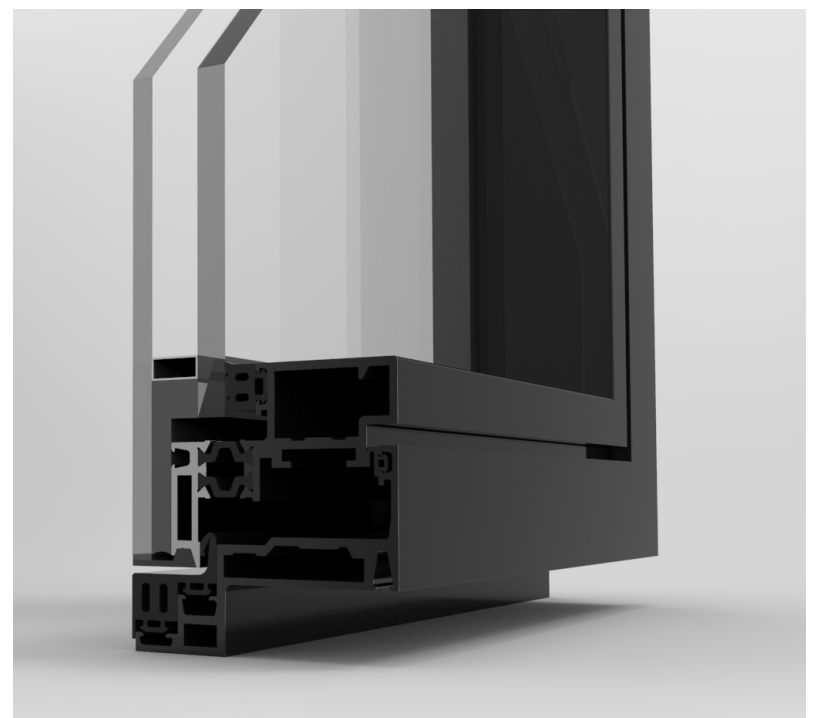
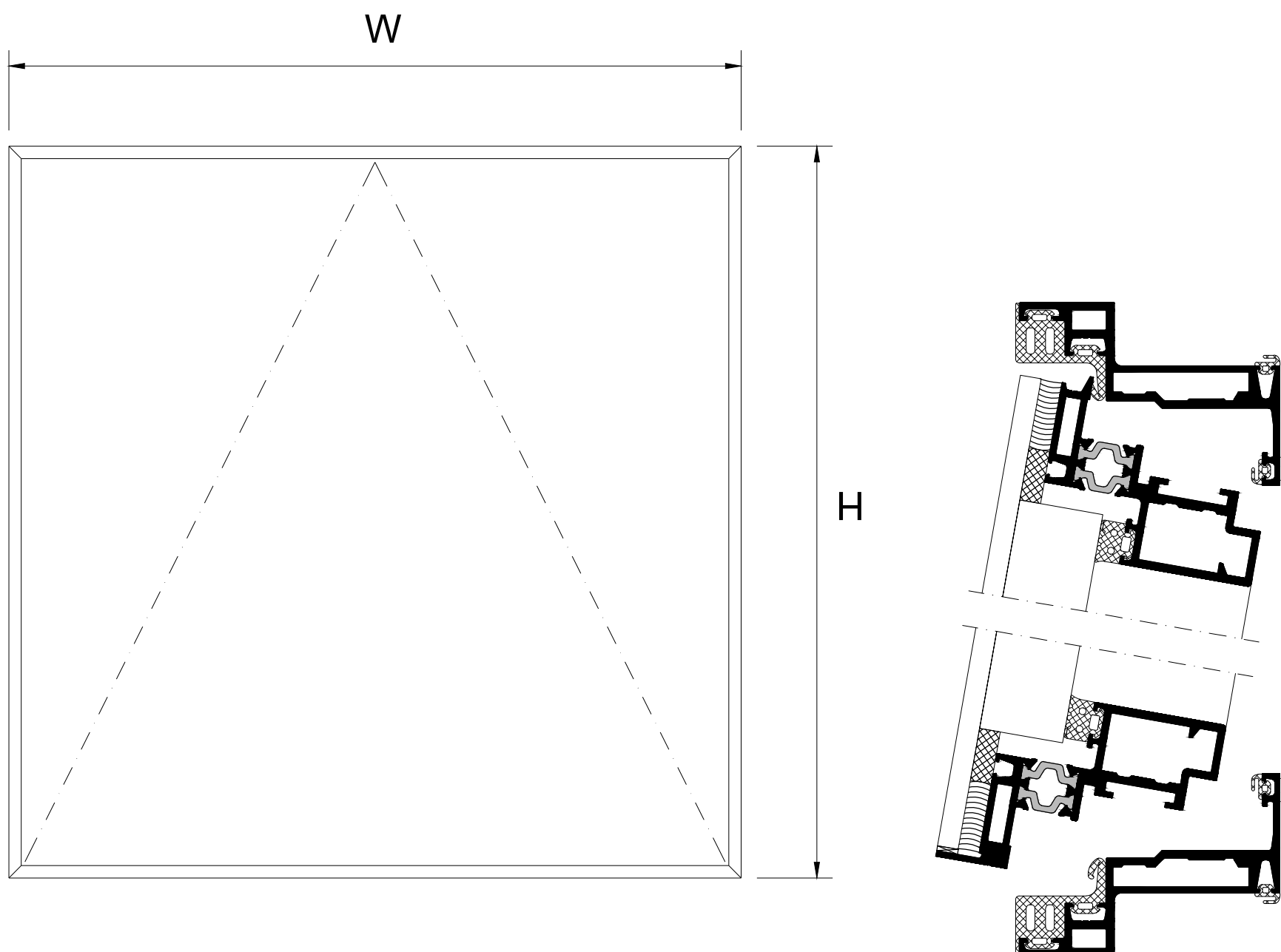
BUILDING SYSTEMS		CATALOGUE	01.2024 REV - 00
------------------	--	-----------	---------------------



S7o SK Top hung concealed

Features

- Heavy Commercial Grade Window
- Tested to US Standards
- 45° Mitered Vent and Frame Corners
- Staked Corner Joinery
- Architectural Anodized Finishes and Applied Coatings

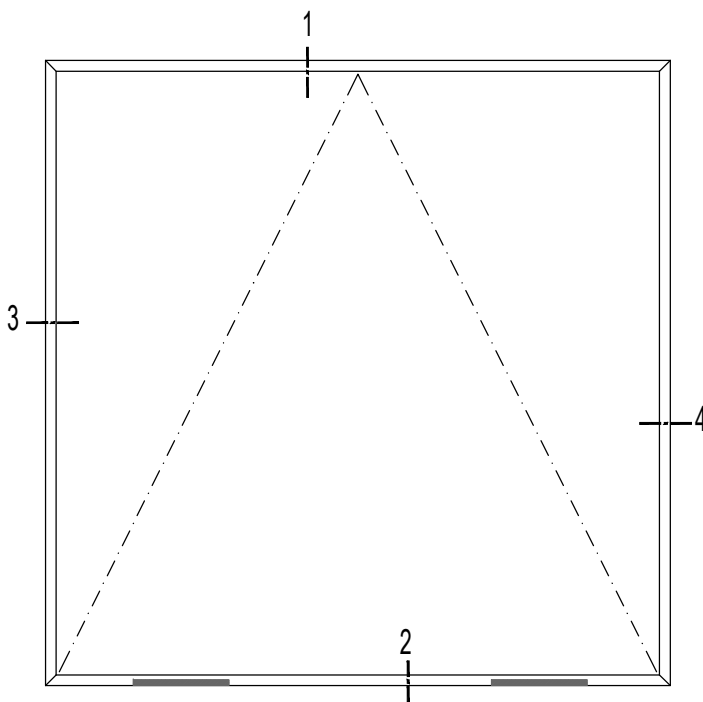
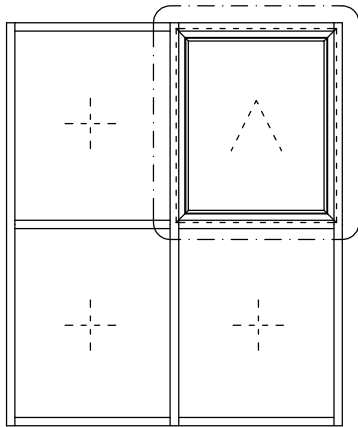


S7o SK zero-sight line

CLASS and GRADE	For tested S70 SK
TESTING STANDARD	AAMA / WDMA / CSA / 101 / I.S.2 / A440 (NAFS) - AW65
SYSTEM DEPTH	2-3/4" [70.0mm] Overall System Depth (1" Infill)
TYPICAL WALL THICKNESS	0.090 Nominal Frame, 0.1"
TYPICAL MAX. VENT SIZE	60" x 90" *
TYPICAL MIN. VENT SIZE	15" x 15"
INFILL OPTIONS	Up to 1 3/4" (48mm)
STANDARD HARDWARE	Gutmann Hinges - Silver EV1; Special coat can be requested
OPTIONAL HARDWARE	Roto set for Euro standards Access Control Lock - by others Removable handles Concealed Lock with removable key Hook Bolt Lock Limit Stop mechanism (rotate to limit)
OTHER OPTIONS	Insect Screens
WATER PERFORMANCE	15 psf (Canada) / 12 psf (USA)
AIR INFILTRATION	6.24 psf (300 Pa)

*subject to width to height ratio

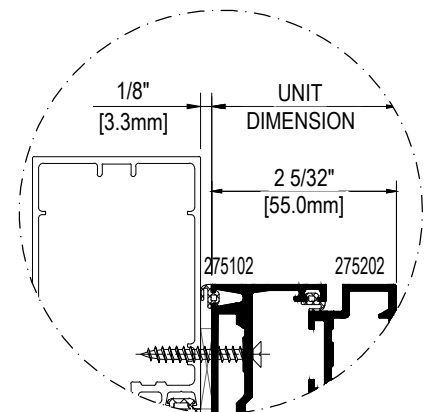
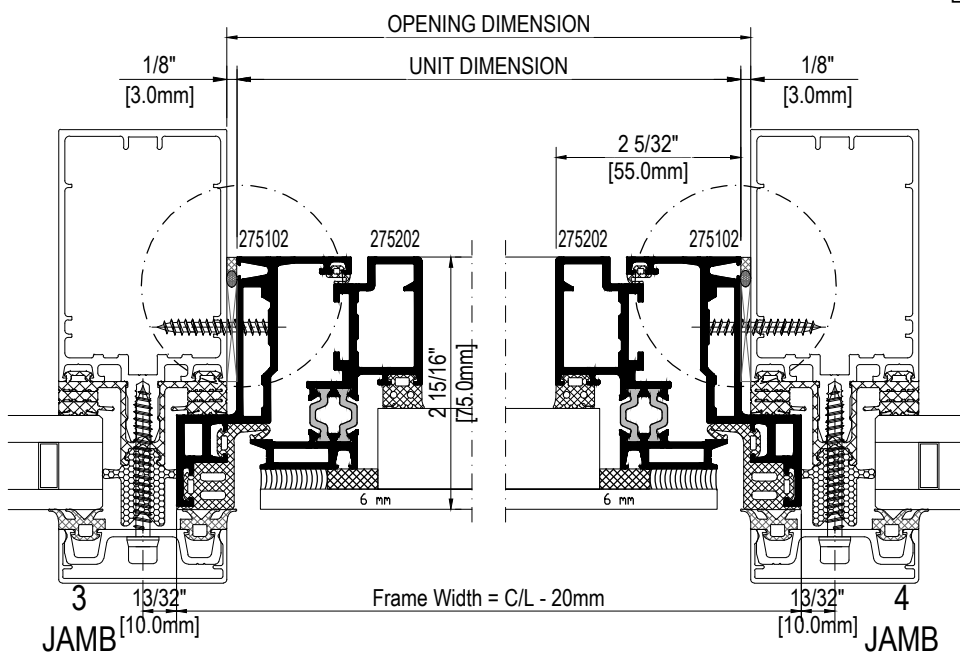
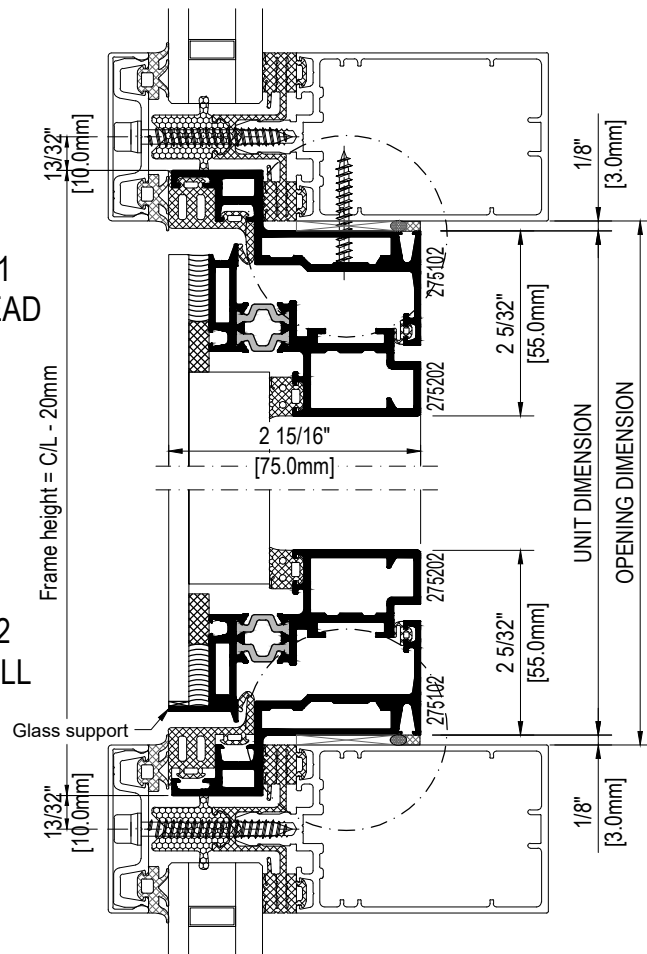
S7o SK Top hung concealed - Captured



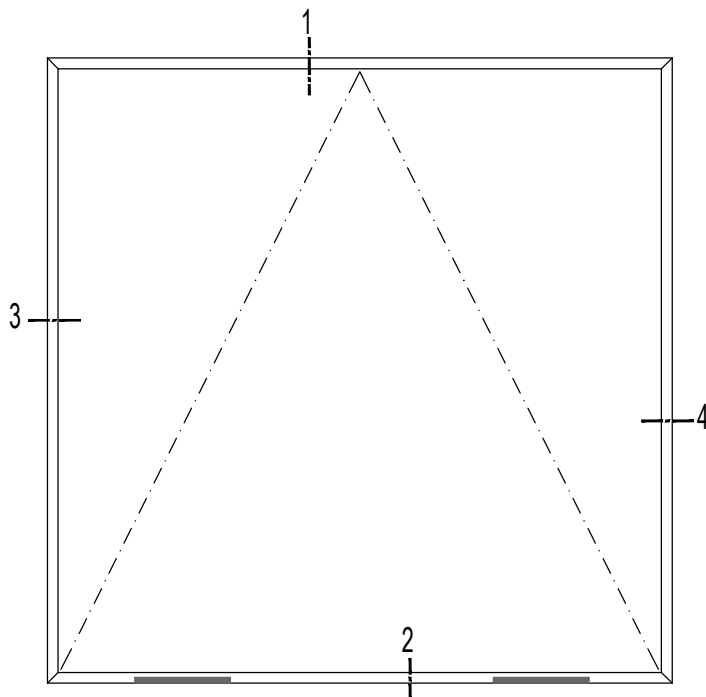
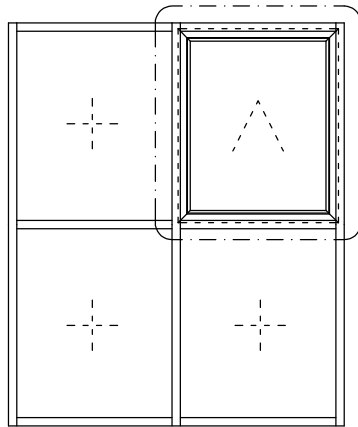
1
HEAD

2
SILL

Frame height = C/L - 20mm

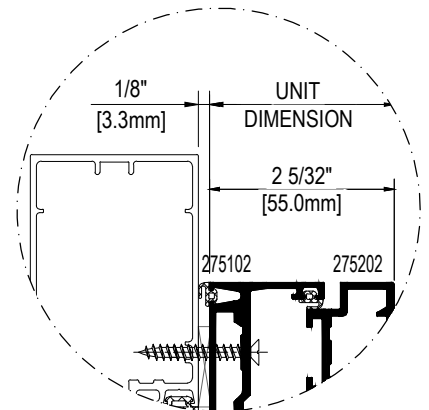
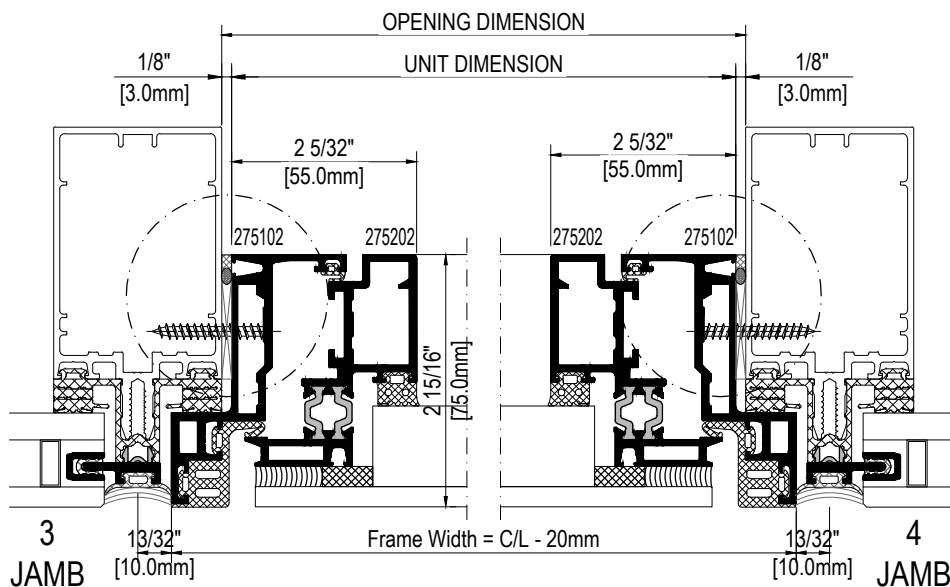
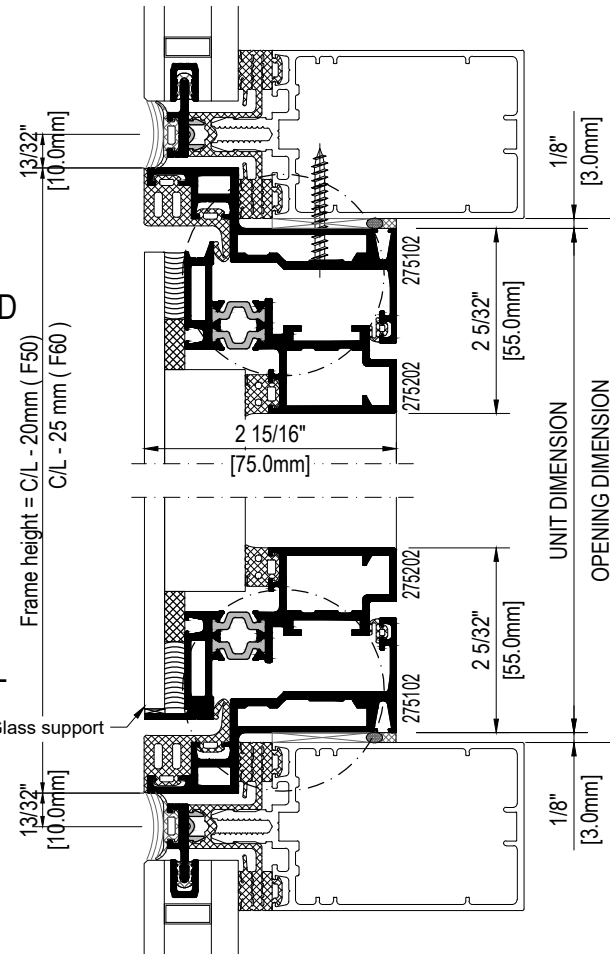


S7o SK Top hung concealed - SSG



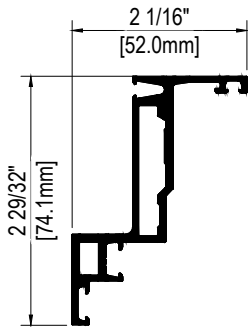
1
HEAD

2
SILL

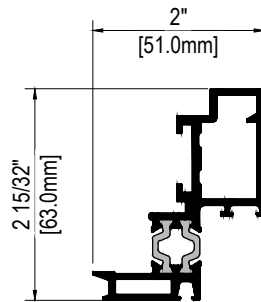


S7o SK Top hung concealed

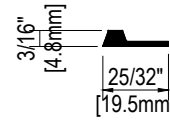
PROFILES



275102
VENT FRAME PROFILE



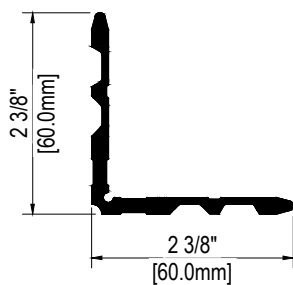
275202
VENT SASH PROFILE



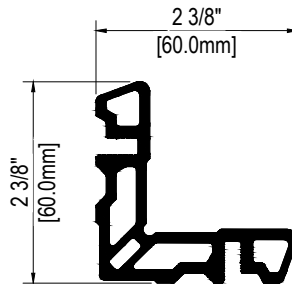
408015
GLASS SUPPORT



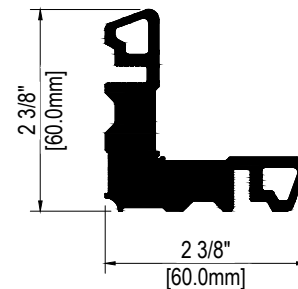
460500
CONNECTING ROD



420001
FRAME CORNER CLEAT PROFILE



420012
SASH CORNER CLEAT PROFILE



420019
SASH CORNER CLEAT PROFILE

GASKETS



770006
FRAME GASKET



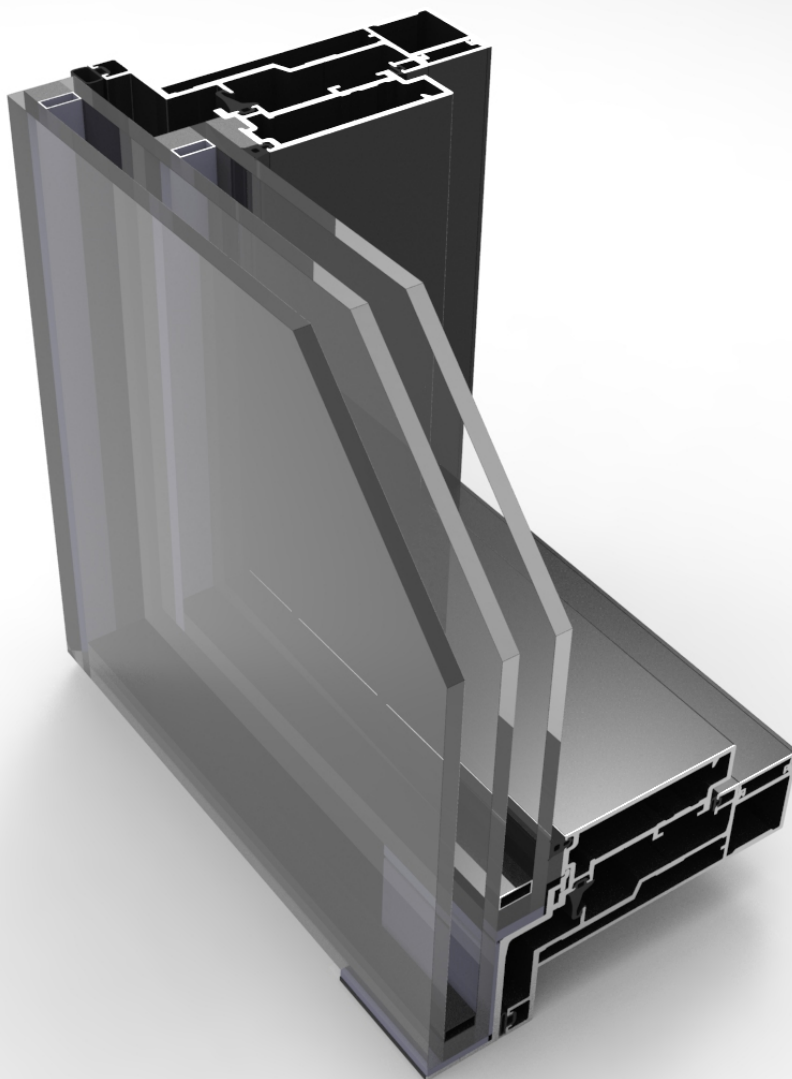
750207
GLAZING GASKET



770007
REBATE GASKET

GUTMANN S70 SK SYSTEM - HW Zero

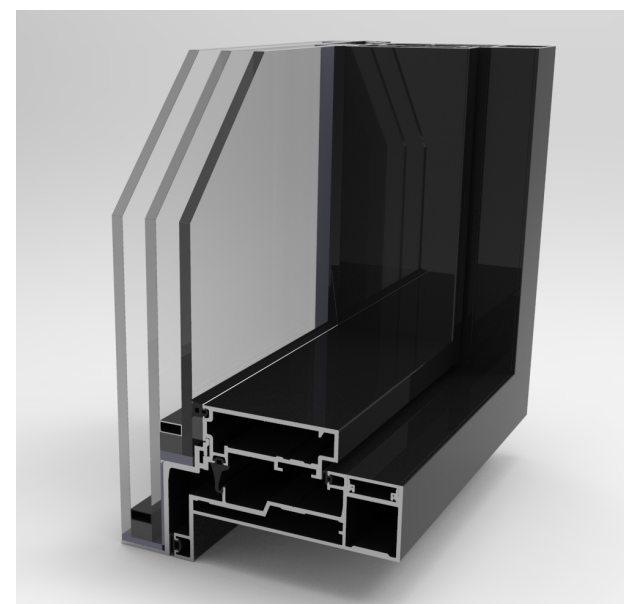
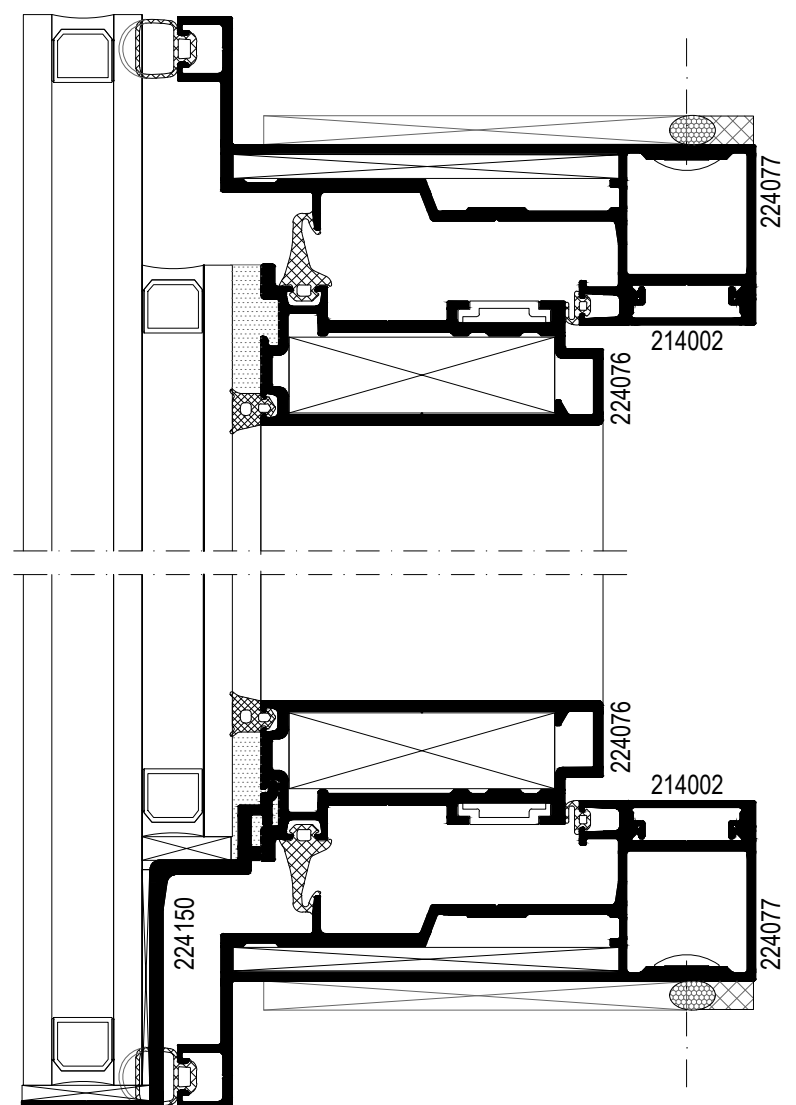
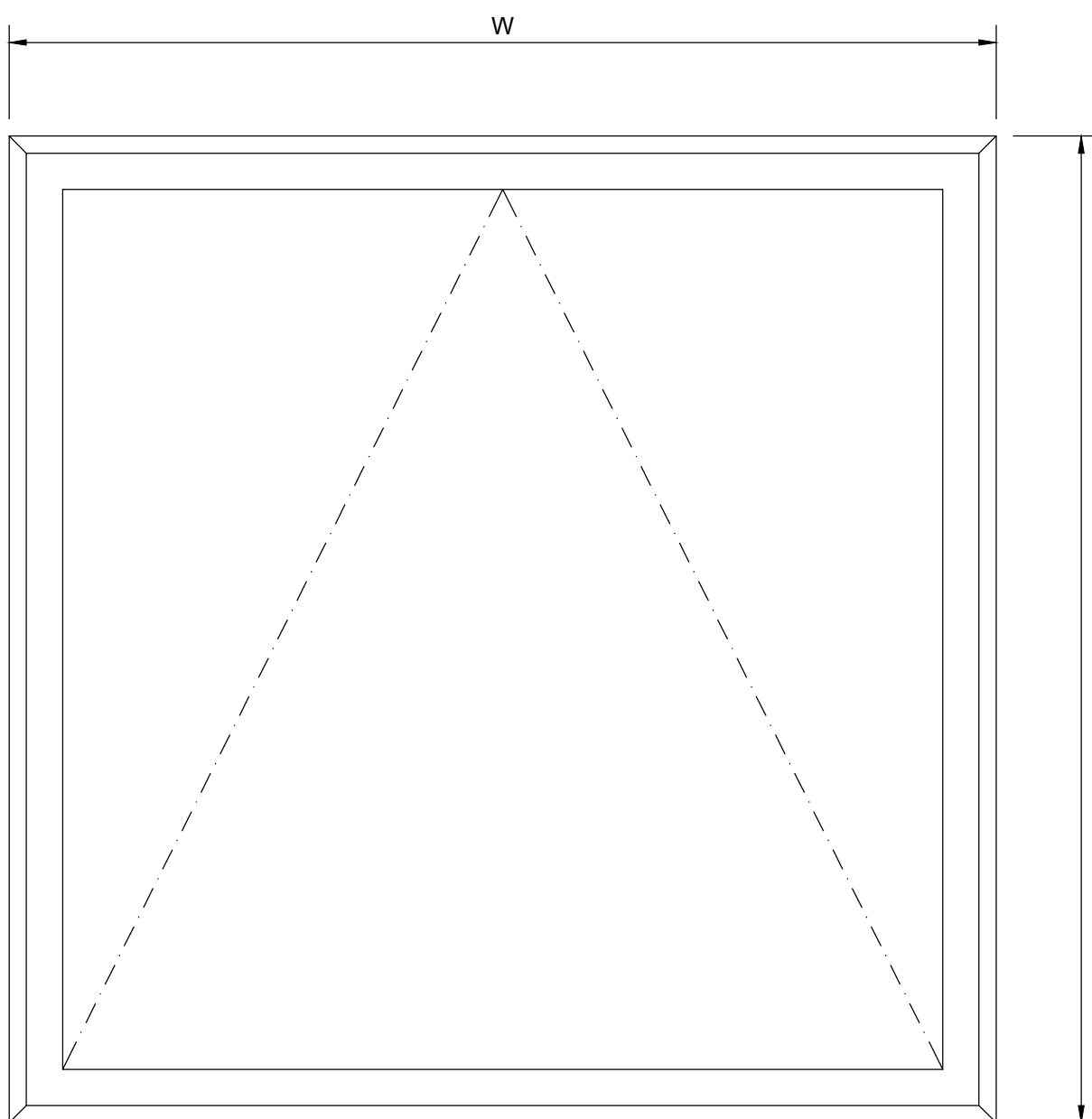
BUILDING SYSTEMS		CATALOGUE	01.2024 REV - 00
------------------	--	-----------	---------------------



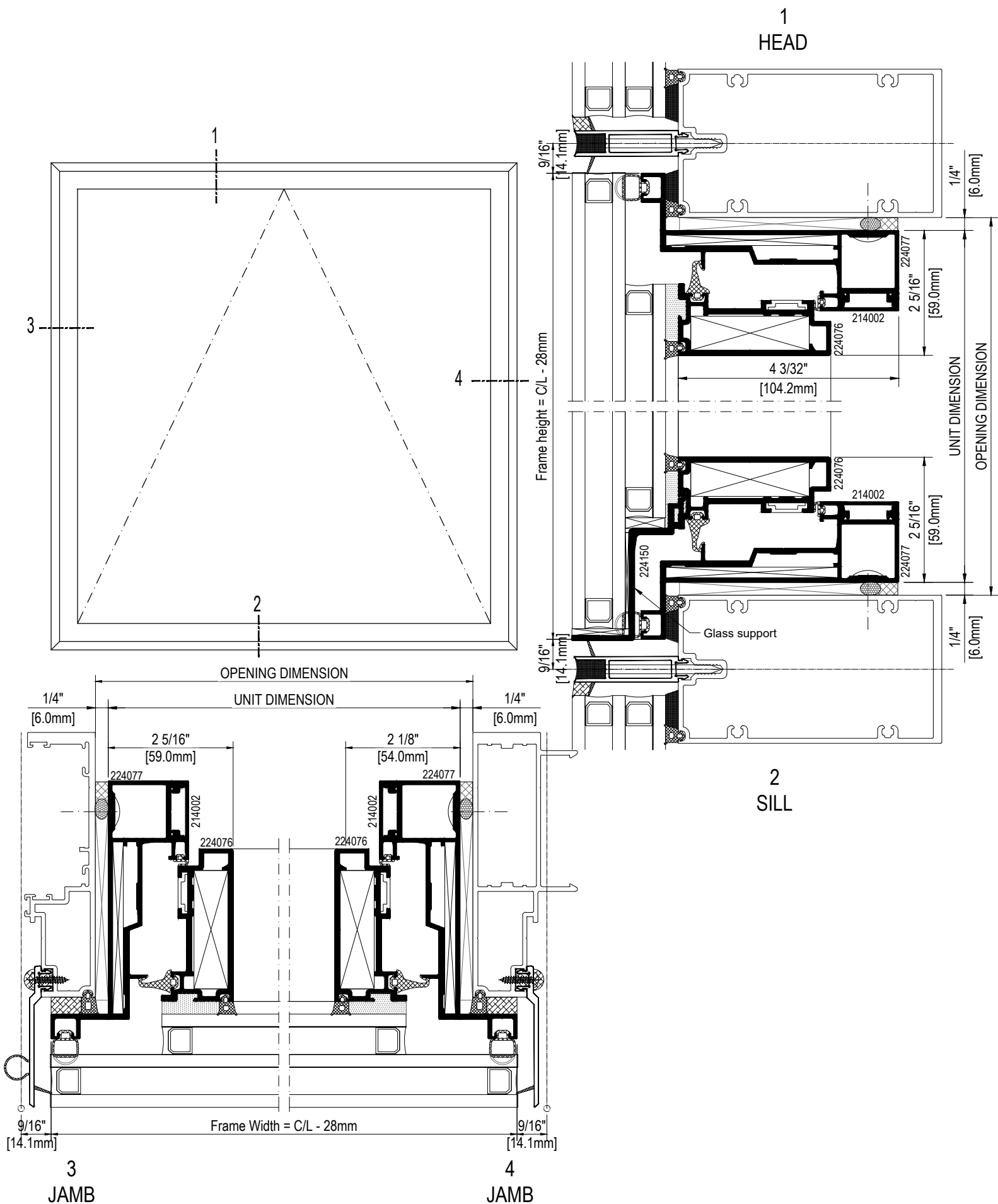
S7o SK zero-sight line

Features

- Heavy Commercial Grade Window
- Tested to US Standards
- 45° Mitered Vent and Frame Corners
- Staked Corner Joinery
- Architectural Anodized Finishes and Applied Coatings

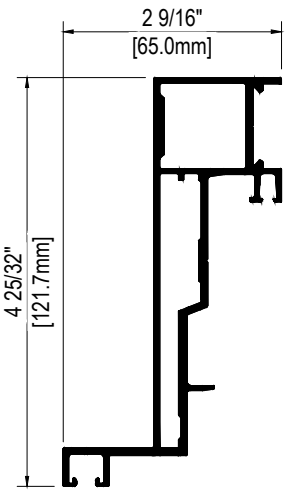


S7o SK zero-sight line

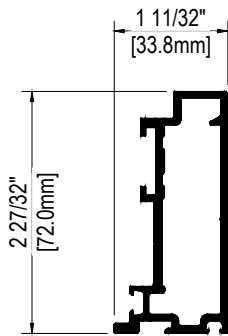


S7o SK zero-sight line

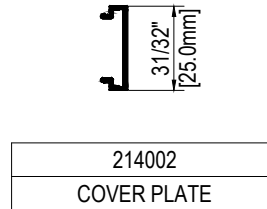
PROFILES



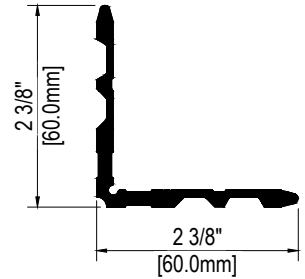
224077
VENT FRAME PROFILE



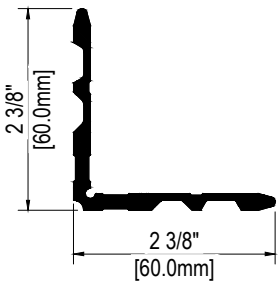
224076
VENT SASH PROFILE



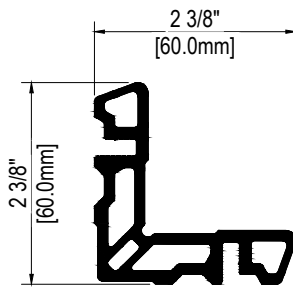
460500
CONNECTING ROD



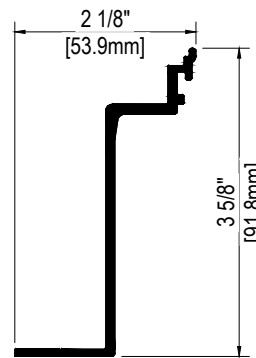
420001
FRAME CORNER CLEAT PROFILE



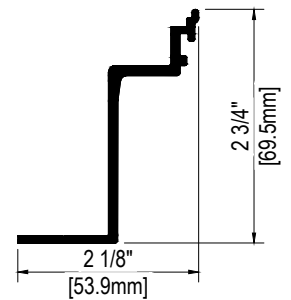
420001
FRAME CORNER CLEAT PROFILE



420012
SASH CORNER CLEAT PROFILE



224078
GLASS SUPPORT



224150
GLASS SUPPORT

GASKETS



750072
REBATE GASKET



423037
GLAZING GASKET



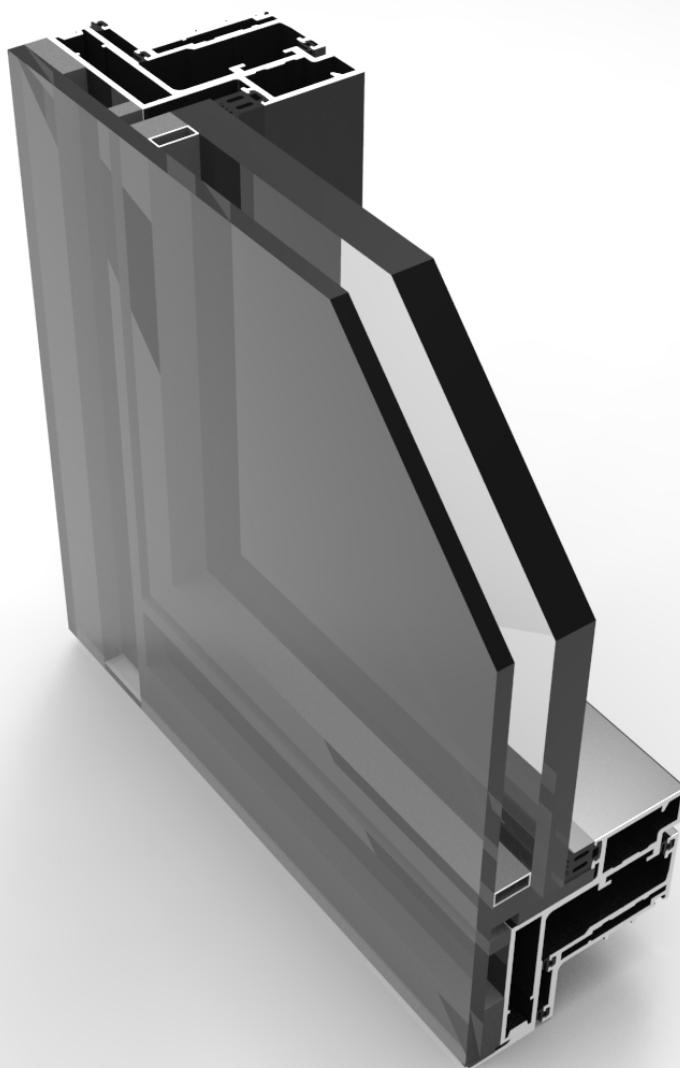
770007
REBATE GASKET



421028
GLAZING GASKET

GUTMANN S70 SK SYSTEM - Zero

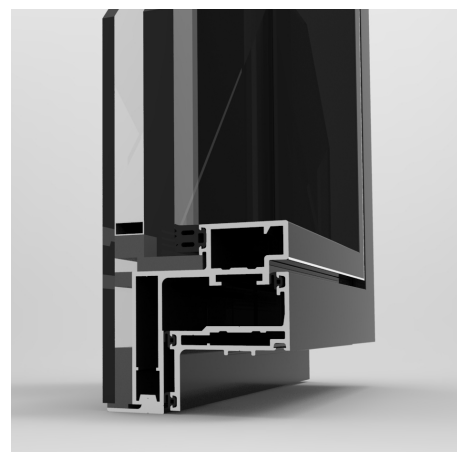
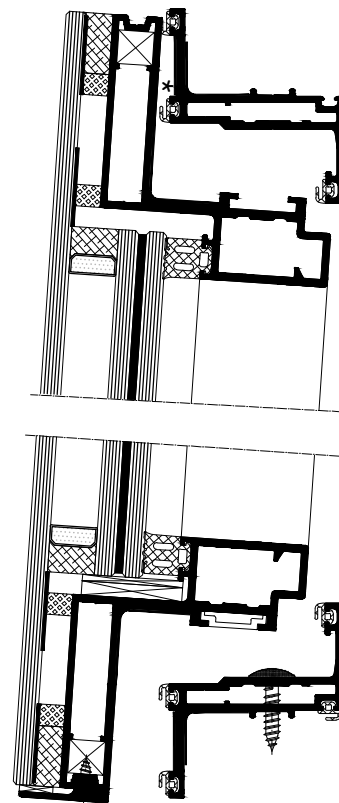
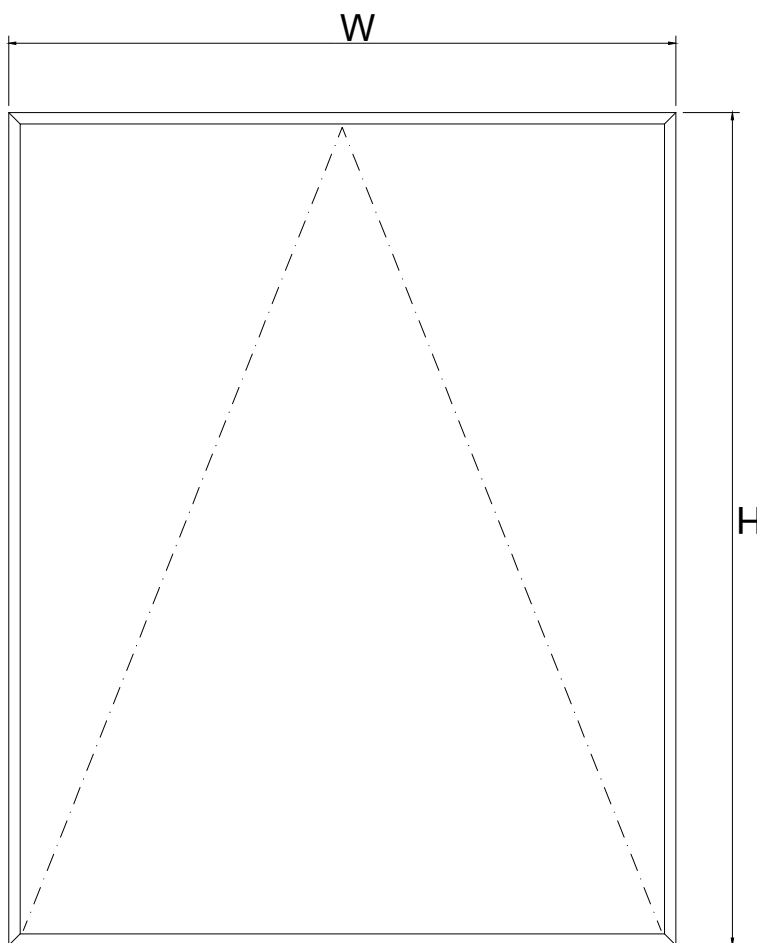
BUILDING SYSTEMS		CATALOGUE	01.2024 REV - 00
------------------	--	-----------	---------------------



S7o SK Top hung concealed

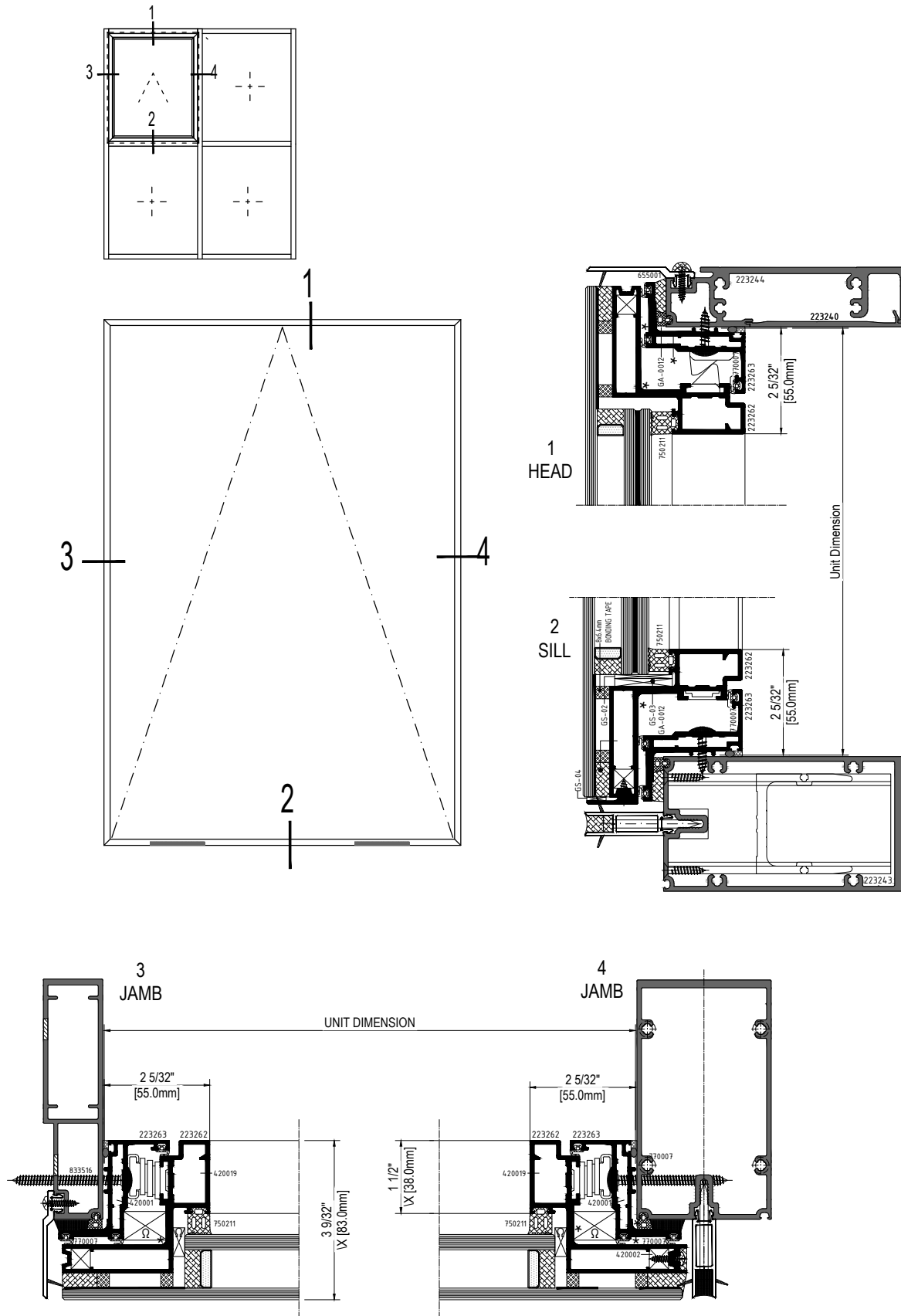
Features

- Heavy Commercial Grade Window
- Tested to US Standards
- 45° Mitered Vent and Frame Corners
- Staked Corner Joinery
- Architectural Anodized Finishes and Applied Coatings



S7o SK Top hung concealed

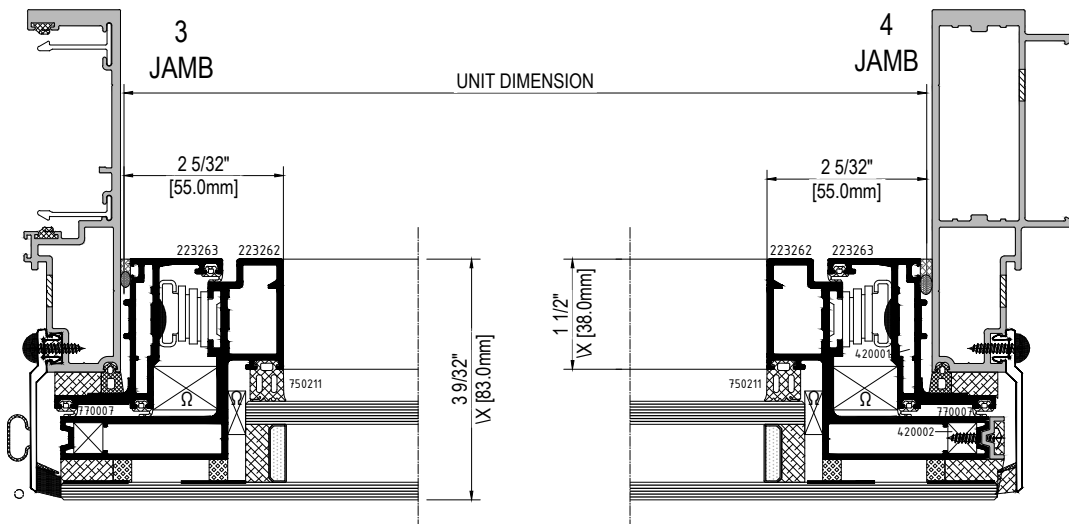
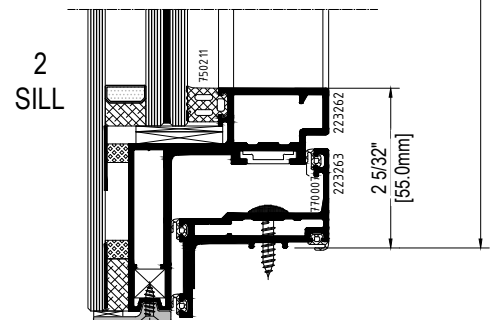
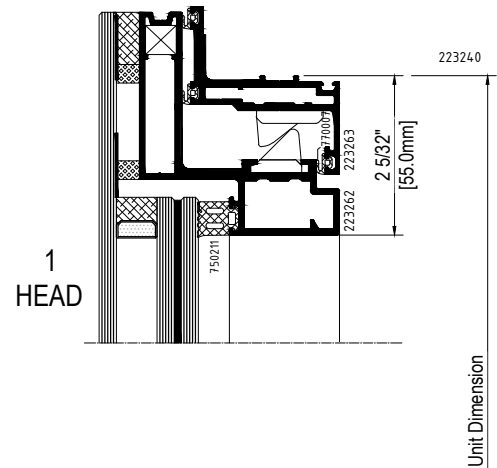
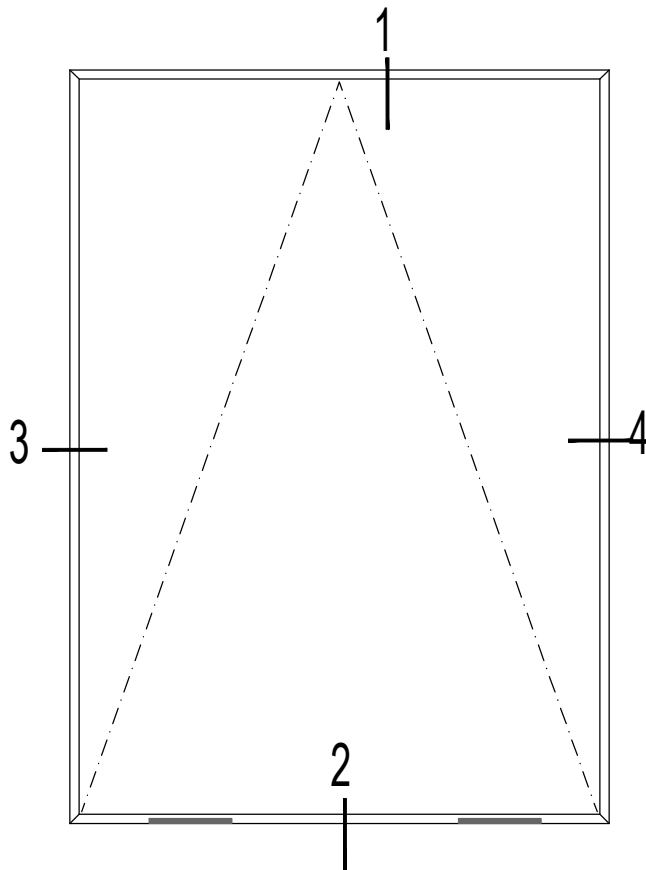
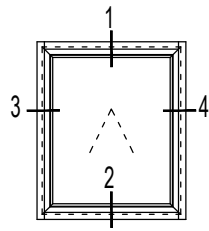
- UPW 30 INTEGRATION





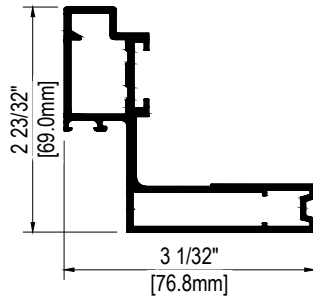
S7o SK Top hung concealed

UWW 70 INTEGRATION

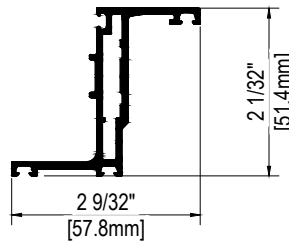


S7o SK Top hung concealed

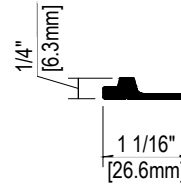
PROFILES



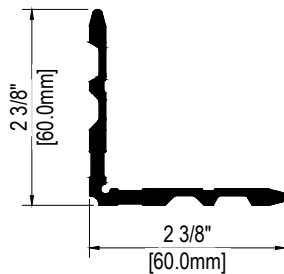
223262
VENT FRAME PROFILE



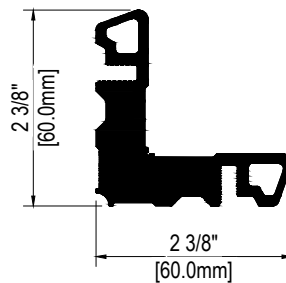
223263
VENT SASH PROFILE



224161
GLASS SUPPORT



420001
FRAME CORNER CLEAT PROFILE



420019
SASH CORNER CLEAT PROFILE

GASKETS

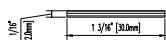


750211
FRAME GASKET

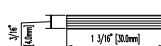


770007
REBATE GASKET

ACCESSORIES



GS 02
Glass Seat



GS 03
Glass Seat

