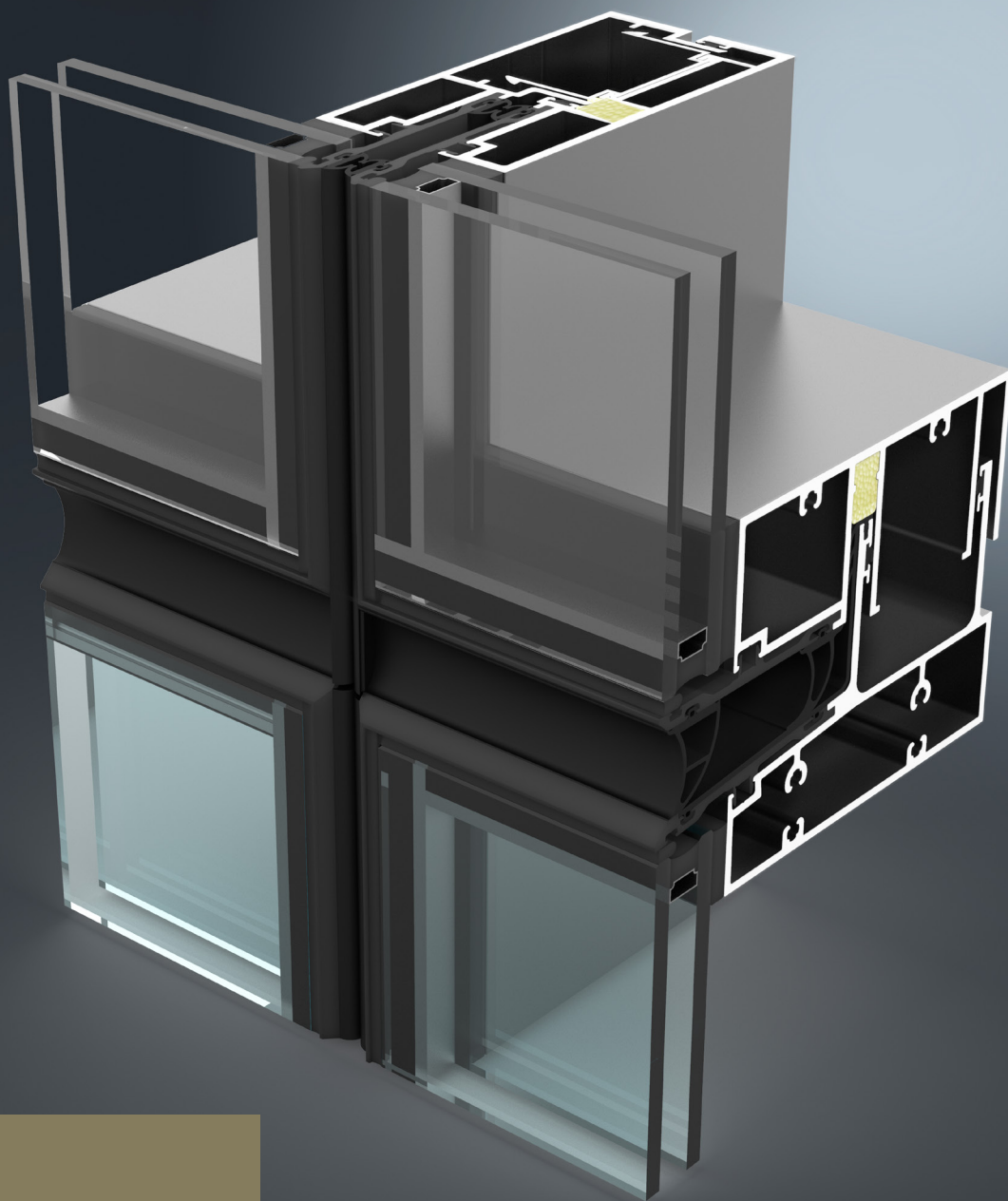




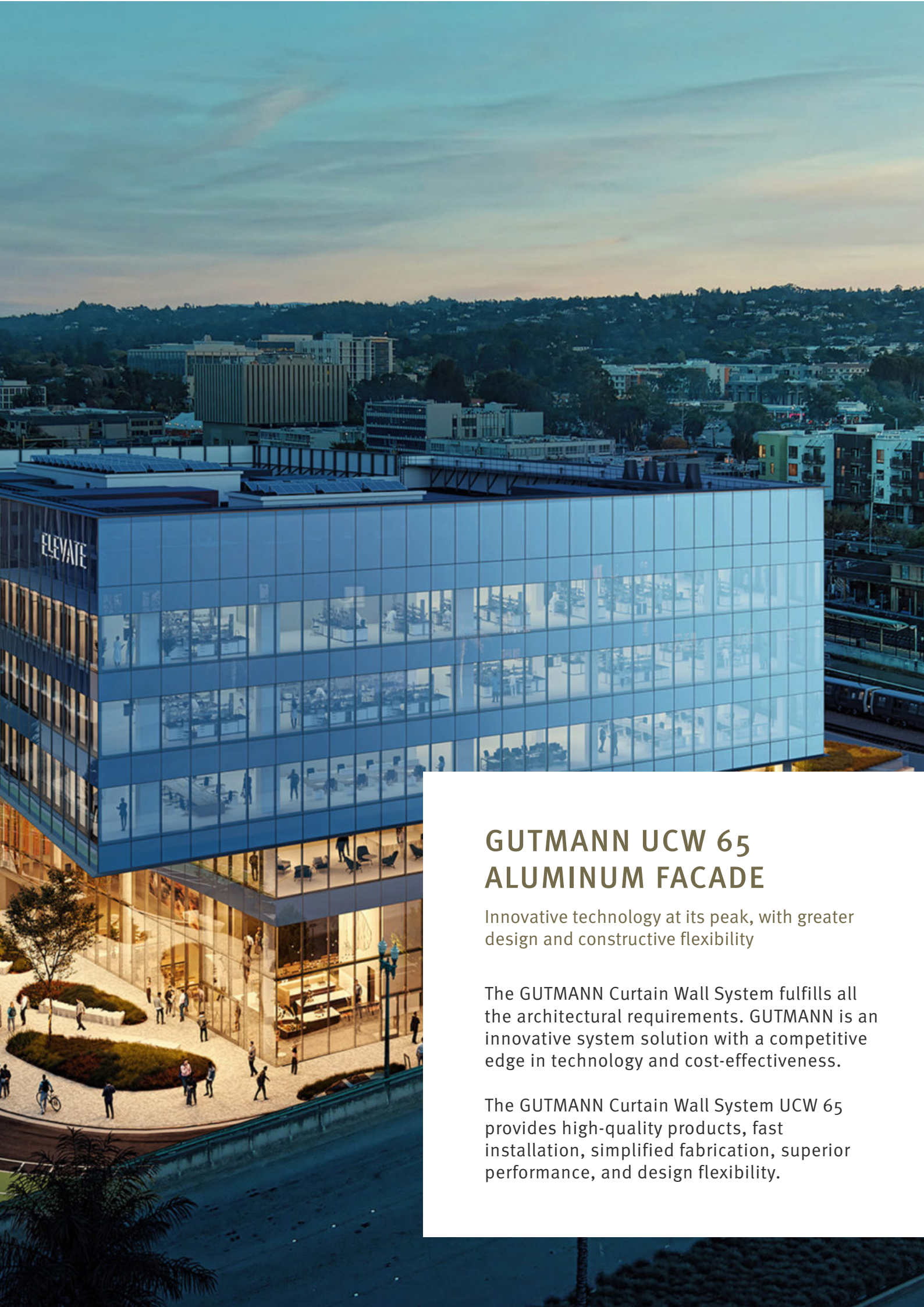
# GUTMANN UCW 65

Unitized Curtain Wall Systems



**GUTMANN**  
New dimensions  
offer new  
perspectives

**ALUMINUM** SHAPED BY GUTMANN



## GUTMANN UCW 65 ALUMINUM FACADE

Innovative technology at its peak, with greater design and constructive flexibility

The GUTMANN Curtain Wall System fulfills all the architectural requirements. GUTMANN is an innovative system solution with a competitive edge in technology and cost-effectiveness.

The GUTMANN Curtain Wall System UCW 65 provides high-quality products, fast installation, simplified fabrication, superior performance, and design flexibility.



## SYSTEM DESCRIPTION

- › Unitized, pre-glazed, and fabricated system
- › Unitized construction accelerates installation, reducing field labour costs
- › Standard infill option 1" (25.4mm) and other infills options are available
- › 2½" x 4⅞" (65mm x 125mm) profile to 2½" x 7⅞" (65mm x 195mm), any other profiles can be designed as per project need
- › Available systems include:
  - Four-Sided Captured
  - Vertical SSG (Structural Silicone Glazed)
  - Horizontal SSG
- › Split mullion and expansion/stack horizontal
- › Extruded EPDM or silicone for air and weather seal gaskets
- › It employs a continuous thermal break vertically and horizontally, providing ultra-thermal performance level in a cost-effective unitized curtain wall system
- › Different options of finish are available
- › Tested to AAMA, ASTM, and CSA standards

Our in-house design assist, engineering, manufacturing, and installation capabilities ensure maximum efficiency throughout the entire process.

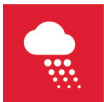
## SYSTEM PROPERTIES



Air Infiltration  
**ASTM E283 / E283m-19**  
0.06 cfm/ft<sup>2</sup>. @ 6.24 psf (300 pa)



Structural Performance  
**ASTM E330**  
up to +/- 63psf (+/- 3000 pa)



Water Penetration  
**ASTM E331-00 AAMA 501.1-17**  
Static  
**20 psf (1000 Pa)**  
Dynamic  
**15 psf (720 Pa)**

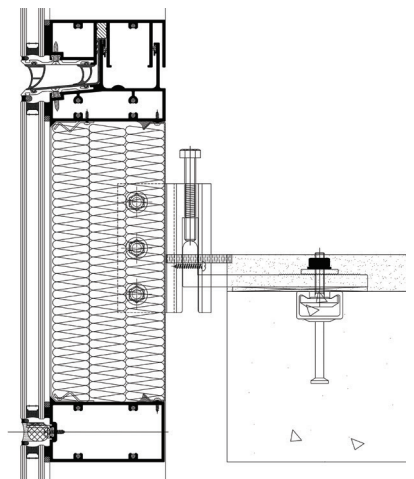
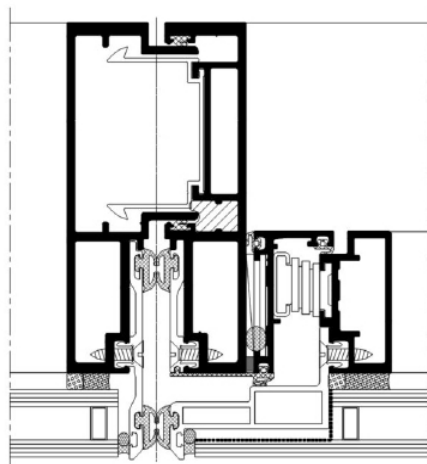
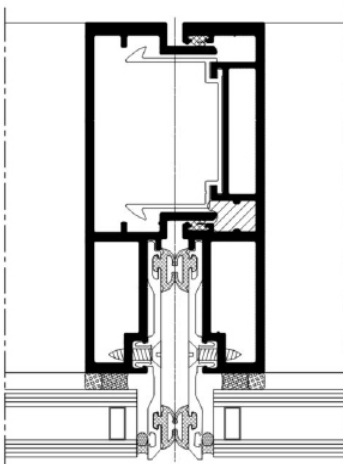


Thermal Transmittance (U-Factor)  
**NFRC 100**  
0.32 (DG)-COG-0.28 with Aluminum Spacer  
This value may vary according to glass choice, framing configuration, and spandrel to vision ratios.

## OPTIONAL FEATURES

- › The captured system integrates with standard GUTMANN windows and doors
- › Captured system integrates with concealed SK70 Vents

## SYSTEM CROSS-SECTION





**GUTMANN**  
Innovative  
technology  
at the  
highest level

**BECOME A GUTMANN PARTNER AND  
ENJOY THE FOLLOWING ADVANTAGES:**

**Industry Expertise:** With extensive experience, we stand as a leader in the façade business, showcasing deep industry knowledge and understanding.

**Comprehensive Solutions:** From structural engineering consulting to implementing advanced system technology, we tailor end-to-end solutions for your unique project requirements.

**Quality Commitment:** Our reputation in the aluminum industry is built on a steadfast commitment to delivering top-quality products.

**Efficient Logistics:** Backed by high storage capacity and streamlined logistics, we guarantee swift and punctual deliveries, enhancing overall project efficiency.

**Customer-Centric Approach:** Success is achieved through the seamless integration of sophisticated design, certified safety, and sustainable profitability, ensuring maximum customer satisfaction.



**GUTMANN NORTH AMERICA**  
418 Iroquois Shore Rd | Suite 203,  
L6H 0X7, Oakville, ON, Canada  
T: + 1 (416) 488 6266

[www.gutmann-na.com](http://www.gutmann-na.com)