

Gutmann Unitized Systems

GENERAL SYSTEM DESCRIPTION

The **Gutmann Unitized Systems** are pre-fabricated, pre-glazed systems designed to improve quality control, accelerate installation, and reduce field labor costs.

- › UCW and UWW systems feature advanced gasket solutions for air and weather sealing, including extruded EPDM or silicone gaskets, air and weather seal gaskets, and structural silicone glazing spacers compatible with structural and weather sealants
- › Designed to accommodate standard 1" (25.4 mm) infill, with the flexibility to accept glazing thicknesses exceeding 2" (50.8 mm) as needed
- › Stack horizontals with double leg stack joint for improved air and water tightness
- › Designed with continuous polyamide thermal breaks, providing ultra-thermal performance in a cost-effective unitized solution
- › Optional steel reinforcement for increased structural capacity
- › Different finish options and RAL colors available
- › Fully integrated with Gutmann Doors and Windows
- › Tested to ASTM and AAMA standards

Unitized Curtain Wall UCW 65

› Standard profile dimensions for UCW 65 from 2 1/2" x 4 7/8" (65 mm x 125 mm) profile to 2 1/2" x 7 11/16" (65 mm x 195 mm) and UCW 80 with a profile of up to 3 5/32" x 10 1/16" (80 mm x 255 mm)

- › Available Configurations:
- Vertical SSG
 - Horizontal SSG
 - Four-Sided SSG
 - Capped Horizontal

Unitized Window Wall UWW 70

› Standard profile dimensions for UWW70 are 2 3/4" x 4 7/8" (70 mm x 125 mm) profile to 2 3/4" x 7 11/16" (70 mm x 195 mm), with custom profiles available to meet specific project requirements.

- › Available in Vertical SSG, and Four-Sided SSG
- › Split mullions option to support prefabrication and glazing
- › Header and sill track options available, allowing for interior or exterior on site installation



Ālia, Honolulu, HI - USA

UWW 70



Woodbine Hotel & Casino, Toronto - ON

UCW 65

SYSTEM PROPERTIES UCW & UWW



Thermal Transmittance (U-Factor)
NFRC 100
0.17 Btu/hr/ft²·Fº using COG 0.12
This value may vary according to glass selection, framing configuration and spandrel to vision ratios.



Air Leakage
ASTM E283
0.017 cfm/ft² @6.24 PSF (300 Pa)



Water Penetration
ASTM E331 | AAMA 501.1
Static 20 PSF (1000 Pa) Dynamic 15 PSF (720 Pa)



Structural Performance
ASTM E330
Up to +/-41.8 PSF (+/- 2000 Pa)



Cullen Tower - BCM - TX, USA

UCW 80

SYSTEM PROPERTIES for UWW70



Air Leakage
ASTM E283/E283M
0.017 cfm/ft² @6.24 PSF (300 Pa)

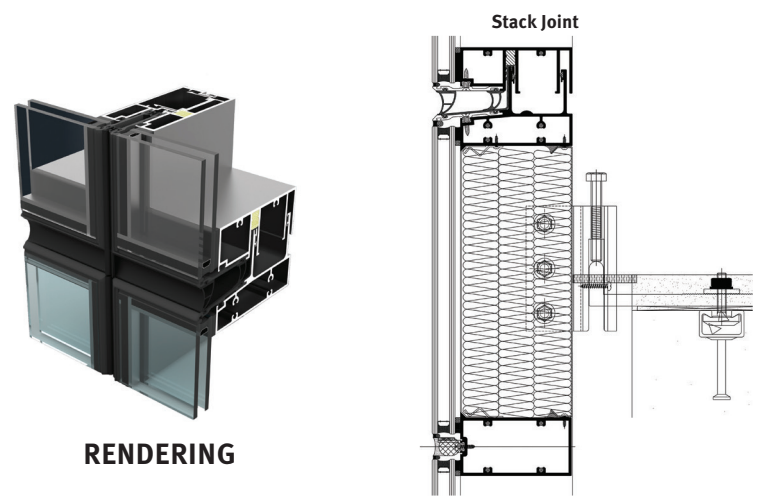


Water Penetration
ASTM E331 (REAPPROVED 2023)
Static 20 PSF (1000 Pa) Dynamic 15 PSF (720 Pa)

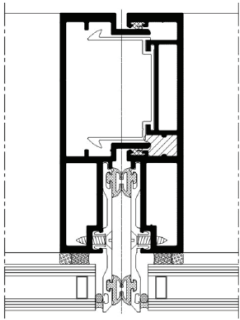


Structural Performance
ASTM E330 (REAPPROVED 2021)
Up to +/-41.8 PSF (+/- 2000 Pa)

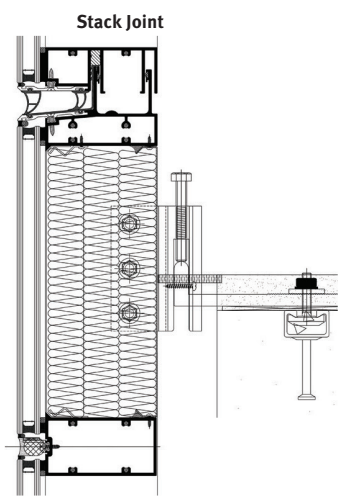
UNITIZED CURTAIN WALL - UCW65



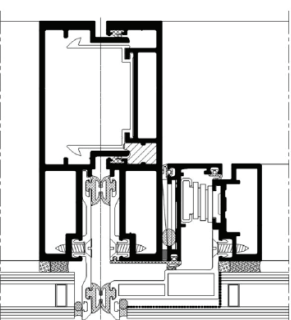
RENDERING



System Top View

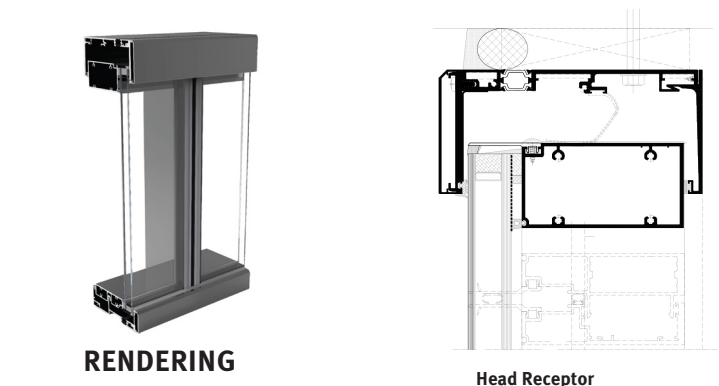


Spandrel Detail

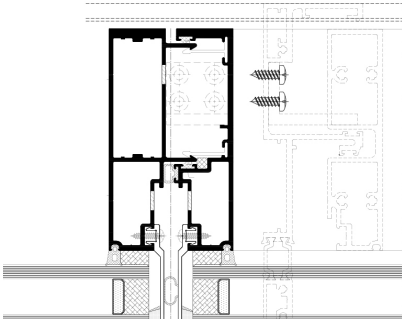


Top view With Vent

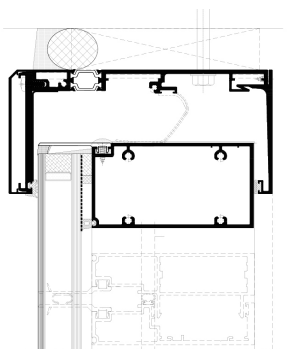
UNITIZED WINDOW WALL - UWW70



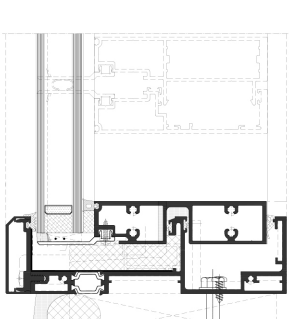
RENDERING



System Top View



Head Receptor



Starter Sill



Avia Labs, CA - USA

UCW 65



Cullen Tower - BCM - TX, USA

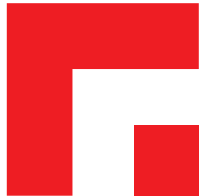
UCW 80



Ālia, Honolulu, HI - USA

UWW 70

ALUMINUM SHAPED BY GUTMANN



GUTMANN
NORTH AMERICA



Our Services

Gutmann offers full turnkey product and service solutions for **glazing contractors**, supporting projects from early schematic design through to final execution.

We work closely with clients to refine glazing systems on a **project-specific basis**, ensuring optimal performance.

We provide structural and thermal calculations to help meet stringent performance and comfort standards, while also providing mockup construction and testing to validate designs before installation.

Our services include **design assist, detailed proposals, shop drawings, and dedicated post-contract support**.

Get in touch today to see how we can elevate your next project!

GUTMANN UNITIZED SYSTEMS Curtain Wall & Window Wall

The Gutmann Unitized Curtain Wall (UCW65) and Unitized Window Wall (UWW70) systems redefine efficiency, performance, and design flexibility for high-rise and mixed-use projects.

These high-quality, pre-glazed systems are engineered for fast, precise installation, significantly reducing field labor while ensuring seamless integration with diverse architectural styles.

With enhanced thermal efficiency and weather resistance, they provide long-term durability without compromising aesthetics.

Their modular design simplifies fabrication while offering the adaptability needed to meet the demands of modern construction. By combining precision engineering with superior performance, Gutmann’s unitized solutions deliver a streamlined approach to façade design, elevating both form and function.

Consider Unitized options for your architectural visions.



GUTMANN NORTH AMERICA
Oakville, ON, Canada
T: +1 (416) 488 6266
E: info@gutmann-na.com
gutmann-na.com

Follow us on social media
 [@gutmann.na](#)

LEARN MORE

