

Stick Curtain Wall Systems

F50++ & F60++ Series

The **F Series Stick Curtain Wall** is a high performance system, with simplified fabrication and easy installation that offers design flexibility and adaptability.

› Available in **Capped** and **Structural Silicone Glazing** (SSG) configurations

› F50++ 2” wide (50 mm) & F60++ 2 3⁄8” (60 mm) wide sightline profiles

› **Identical width** mullion and transom inner glass gasket

› Mullion depth profiles ranging from 1 3⁄8” to 12” (35 mm to 305 mm). Can be tailored to unique spans, loads, and project designs, with optional steel reinforcement available

› Maximum glass loads up to 1610 Lbs (730 kg), depending on wind loads

› Glass options: 3⁄8” to 2 1⁄2” (10 mm single glass up to 65 mm for double and triple-glazed units)

› Continuous gasket technology including a transom gasket designed for controlled drainage and ventilation, in addition to proprietary Gutmann gaskets for improved thermal performance

› Applicable for both sloped and vertical configurations

› Integrates with Gutmann windows, doors, and S70SK vents

› Different finish options and RAL colors available

Split Stick Curtain Wall

The **F Series Split Stick Curtain Wall** is a high-performance system that retains all the benefits of a stick system while allowing for panelization and prefabrication of units.

› The **F Series** split profiles allow for easier handling and connection on-site, combining key benefits of unitized systems with the adaptability of stick-built installations accelerating project timelines and reducing installation complexity.

› Female-female mullion design with gasket joinery helps absorb lateral movement, enhancing the system’s adaptability to minor structural shifts

› Available in dry glazing or structural wet glazing

Cassette Stick Curtain Wall

F60++ Cassette

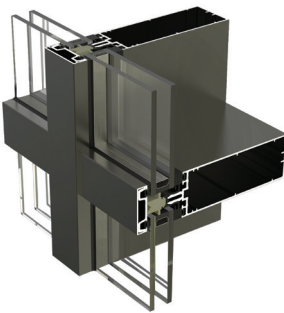
The Gutmann **F60++ Cassette System** is a high-performance, four-sided structurally glazed curtain wall. Glass units are shop-glazed onto cassette profiles using structural silicone with either tape or gaskets, and are then mechanically interlocked with F60++ mullions and transoms for streamlined installation.

› 13⁄16” (20 mm) exterior sightline, 2 1⁄2” (60 mm) interior aluminum sightline

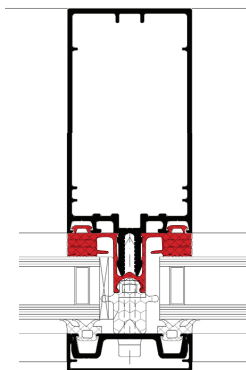
› Glass options: 1” to 1 7⁄16” (26 mm - 36 mm) for double-glazed units

› Designed with identical mullion and transom profiles for efficient manufacturing and installation

› Delivered with straight-cut components with no transom notching, minimizing material waste



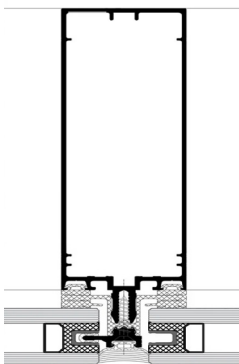
Capped System Profile



F50++/60++
Capped System



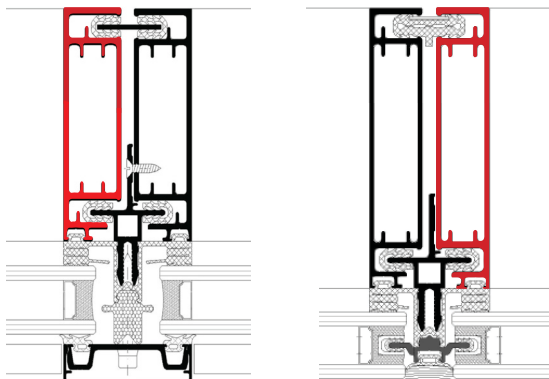
Structural Silicon Glazed



F50++/60++
SSG System



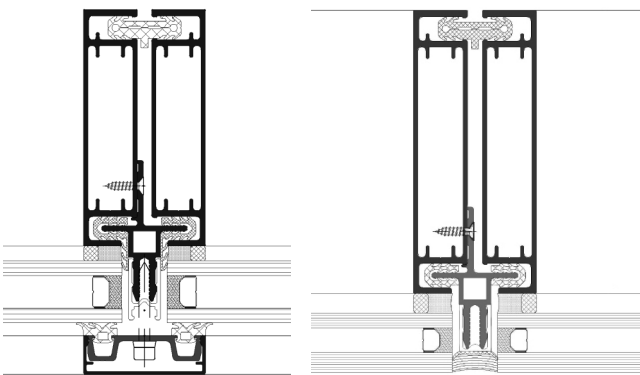
DRY GLAZING



F50++/60++
Capped System

F50++/60++
SSG System with toggle

WET GLAZING

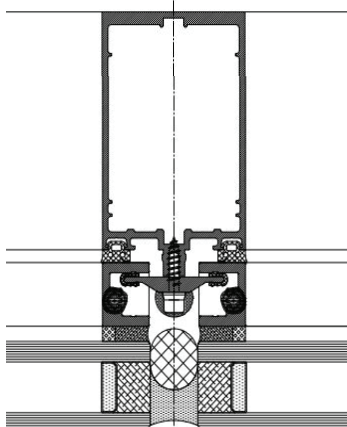


Capped System
Structural Glazing

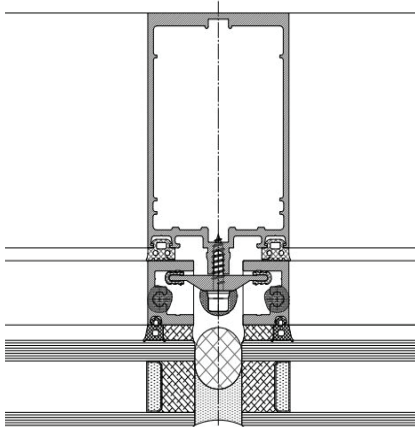
SSG System
Structural Glazing



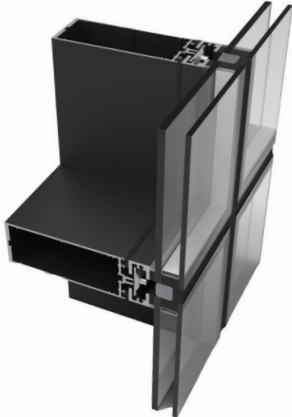
Split System Profile



SSG
With Tape Option



SSG
With Gasket Option



Cassette System Profile

SYSTEM PROPERTIES



Air Leakage
ASTM E283
≤0.01 cfm/ft² @ 6.24 PSF (300 Pa)



Water Penetration
ASTM E331 | AAMA 501.1
Static 15 PSF (720 Pa) Dynamic 15 PSF (720 Pa)



Structural Performance
ASTM E330
Up to +/- 60 PSF (+/- 2880 Pa)



Thermal Transmittance
(U-Factor) **NFRC 100**
0.18 Btu/hr/ft²·Fº using COG 0.10
This value may vary according to glass selection, framing configuration and spandrel to vision ratios

SYSTEM PROPERTIES



Air Leakage
ASTM E283/E283M
≤0.01 cfm/ft² @ 6.24 PSF (300 Pa)



Water Penetration
ASTM E331 | AAMA 501.1
Static 15 PSF (720 Pa) Dynamic 15 PSF (720 Pa)



Structural Performance
ASTM E330
Up to +/- 60 PSF (+/- 2880 Pa)



Seismic
AAMA 501.4-18
±3” (tested) Inelastic Drift