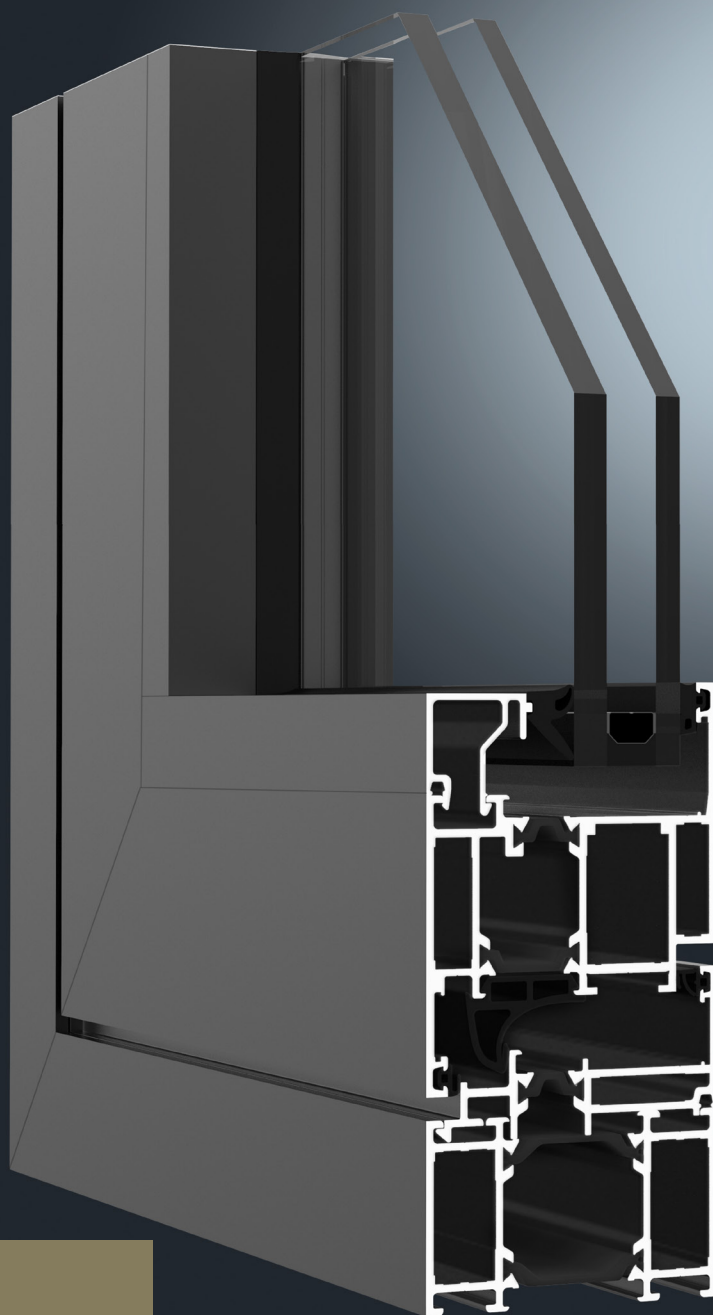




GUTMANN S70+

Top Hung/Awning System



GUTMANN
New dimensions
offer new
perspectives

ALUMINUM SHAPED BY GUTMANN



GUTMANN S70+ AWNING SYSTEM

Innovative technology at its peak, with greater design and constructive flexibility

The GUTMANN S70+ Awning System is a thermally insulated aluminum window system and has been designed and engineered to provide the highest level of quality.

The profile section depth for both the frame and leaf is 70mm = 2 3/4" and is thermally broken. These windows may be installed as independent units or adapted to fit into most of the storefronts, window walls, or curtain wall systems.

SYSTEM DESCRIPTION

- › AW95 Performance Class
- › Profiles with a three-chamber system in symmetrical structure and identical inner & outer glass bead grooves
- › Symmetrical, stable structural design with identical corner and T-connectors
- › Thermally and structurally optimized winglet insulator with high-strength polyamide thermal barrier with a wide range of profile depths
- › Glass up to 2" (50mm) in the fixed panel
- › Life Cycle Tested to AAMA 910 and NAFS

SYSTEM PROPERTIES

Frame Size

59 2/16" x 52 3/4" (1502 mm x 1340 mm)



Air Leakage Infiltration / Exfiltration

ASTM E283-04

<0.1cfm/ft² -prior to and after cycling and
<0.02cfm/ft² after Design Load
0.10 cfm/ft² (allowed) @ 6.27 psf



Uniform Load Structural Test Pressure

ASTM E330-14

+/-6840 Pa (+/- 142.86 psf)



Canadian Air Leakage

ASTM E283

A3 Level



Design Pressure

+/-4560 Pa (+/- 95.24 psf)



Water Penetration

ASTM E547-00

720 pa (15.04 psf) prior to, after cycling
and after design pressure load



Operating Force

ASTM E2068

< 22N (5lbf)



Forced Entry Resistance

ASTM F588-14

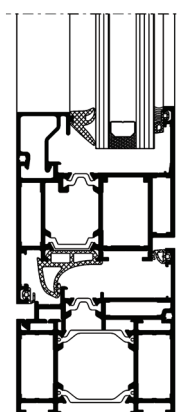
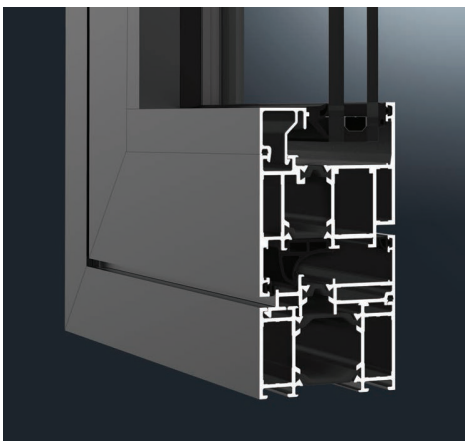
Grade 10 pass



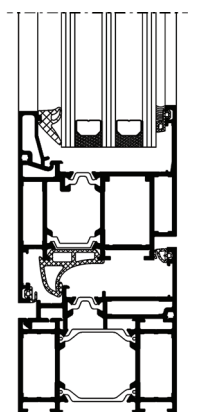
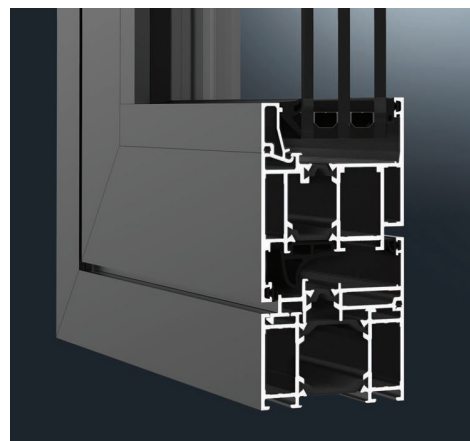
Thermal Transmittance (U-Factor)

Shall not exceed 0.43Btu/hr/ft²-F° for double glazed and 0.37 Btu/hr/ft²-F° with triple glazed. This value may vary according to glass selection and framing configuration.

SYSTEM CROSS-SECTION



Double Glass Unit



Triple Glass Unit



GUTMANN
Innovative
technology
at the
highest level

**BECOME A GUTMANN PARTNER AND
ENJOY THE FOLLOWING ADVANTAGES:**

Industry Expertise: With extensive experience, we stand as a leader in the façade business, showcasing deep industry knowledge and understanding.

Comprehensive Solutions: From structural engineering consulting to implementing advanced system technology, we tailor end-to-end solutions for your unique project requirements.

Quality Commitment: Our reputation in the aluminum industry is built on a steadfast commitment to delivering top-quality products.

Efficient Logistics: Backed by high storage capacity and streamlined logistics, we guarantee swift and punctual deliveries, enhancing overall project efficiency.

Customer-Centric Approach: Success is achieved through the seamless integration of sophisticated design, certified safety, and sustainable profitability, ensuring maximum customer satisfaction.



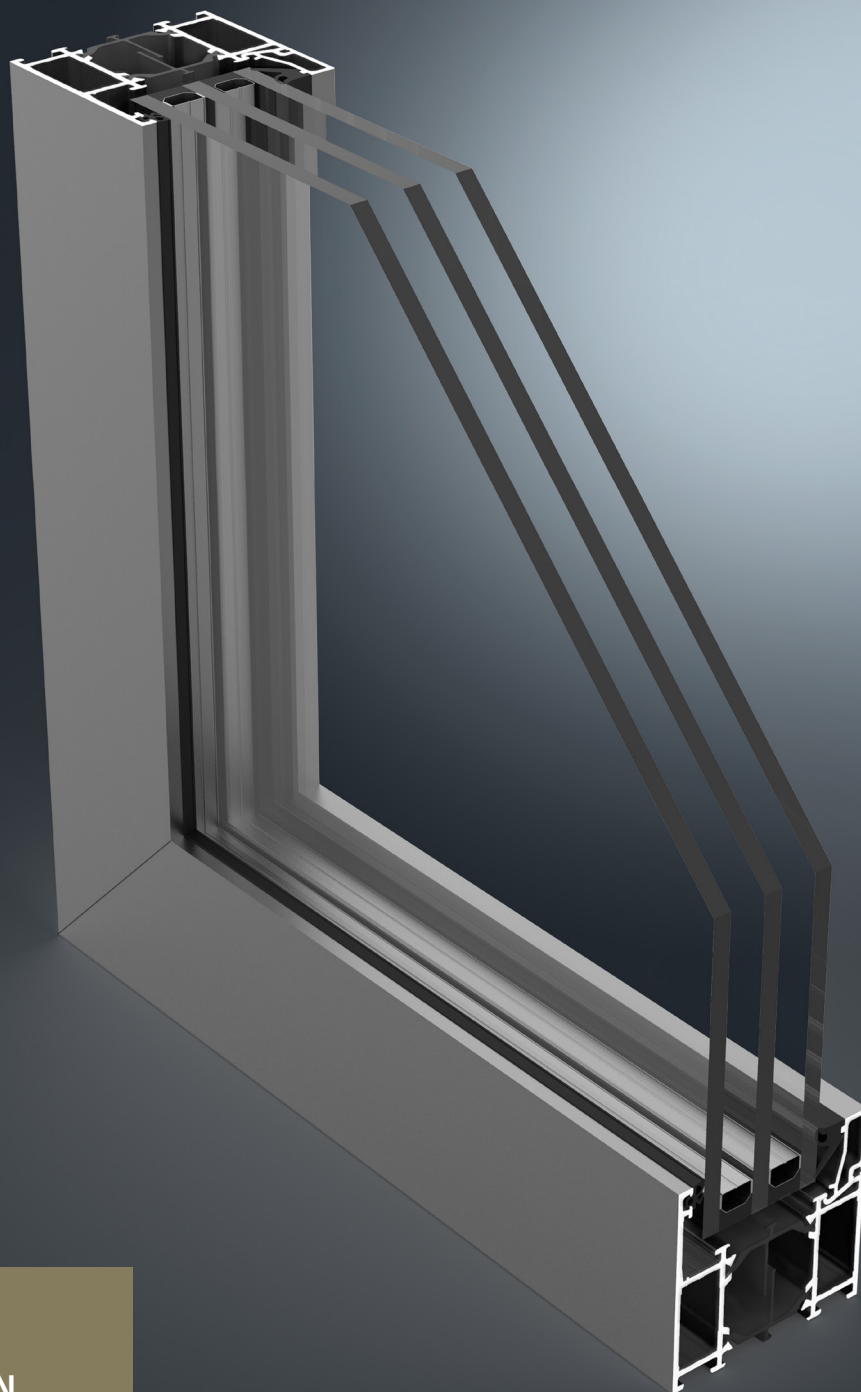
GUTMANN NORTH AMERICA
418 Iroquois Shore Rd | Suite 203,
L6H 0X7, Oakville, ON, Canada
T: + 1 (416) 488 6266

www.gutmann-na.com



GUTMANN S70+

Fixed System



GUTMANN
New dimensions
offer new
perspectives

ALUMINUM SHAPED BY GUTMANN



GUTMANN S70+ FIXED SYSTEM

Innovative technology at its peak, with greater design and constructive flexibility

The GUTMANN S70+ Fixed system is a thermally insulated aluminum window system and has been designed and engineered to provide the highest level of quality.

The profile section depth for both the frame and leaf is 70mm = 2 ¾" and is thermally broken. These windows may be installed as independent units or adapted to fit into most of the storefronts, window walls, or curtain wall systems.

SYSTEM DESCRIPTION

- › AW90 Performance Class
- › Symmetrical, stable structural design with identical corner and T connectors
- › Thermally and structurally optimized winglet insulator with high-strength polyamide thermal barrier in several profile depth
- › Glass up to 2" (50mm) in the fixed panel
- › Life Cycle Tested to AAMA 910 and NAFS

SYSTEM PROPERTIES

Frame Size

59 1/4" x 98 7/8" (1505 mm x 2511 mm)



Air Leakage Infiltration /Exfiltration

ASTM E283-04

<0.01cfm/ft² -prior to and after cycling
and after Design Load
0.10 cfm/ft² (allowed) @ 6.27 psf



Water Penetration

ASTM E547-00

720 pa (15.04 psf) no leakage -prior to, after
cycling and after design load



Canadian Air Leakage

ASTM E283

Fixed Level



Design Pressure

ASTM E330-14

+/-4320 Pa (+/- 90.23 psf)



**Uniform Load Structural Test
Pressure**

ASTM E330-14

+/-6480 Pa (+/- 135.34 psf)



Thermal Transmittance (U-Factor)

The average weighted system "U" value for the
wall assembly shall not exceed 0.26 Btu/hr/ft²-F°
for double glazed and 0.17 Btu/hr/ft²-F° with tri-
ple glazed. This value may vary according to glass
selection and framing configuration.

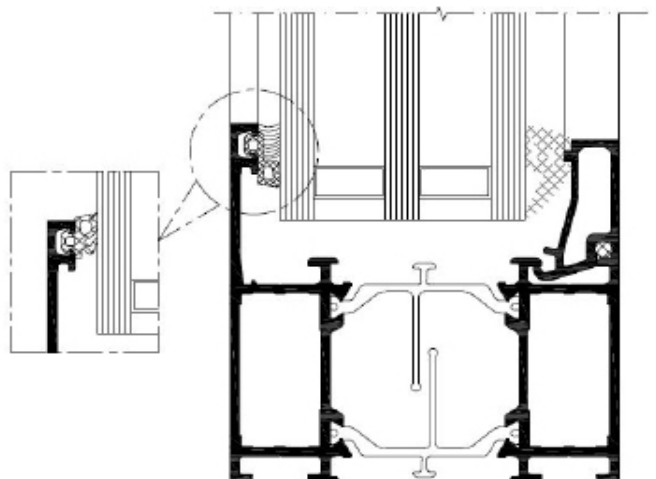
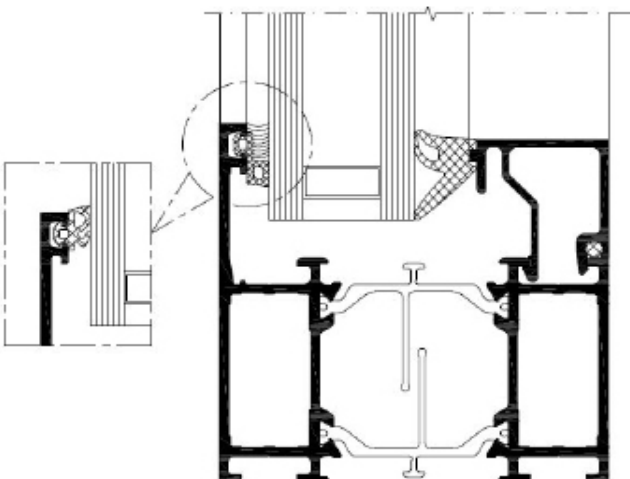
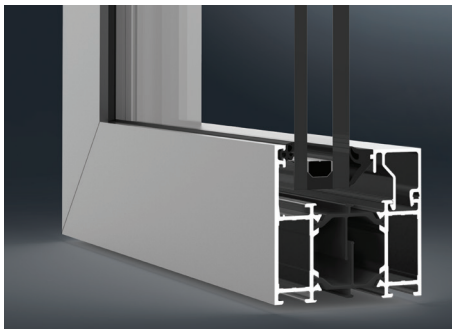


Forced Entry Resistance

ASTM F588-14

Grade 10 pass

SYSTEM CROSS-SECTION





GUTMANN
Innovative
technology
at the
highest level

**BECOME A GUTMANN PARTNER AND
ENJOY THE FOLLOWING ADVANTAGES:**

Industry Expertise: With extensive experience, we stand as a leader in the façade business, showcasing deep industry knowledge and understanding.

Comprehensive Solutions: From structural engineering consulting to implementing advanced system technology, we tailor end-to-end solutions for your unique project requirements.

Quality Commitment: Our reputation in the aluminum industry is built on a steadfast commitment to delivering top-quality products.

Efficient Logistics: Backed by high storage capacity and streamlined logistics, we guarantee swift and punctual deliveries, enhancing overall project efficiency.

Customer-Centric Approach: Success is achieved through the seamless integration of sophisticated design, certified safety, and sustainable profitability, ensuring maximum customer satisfaction.



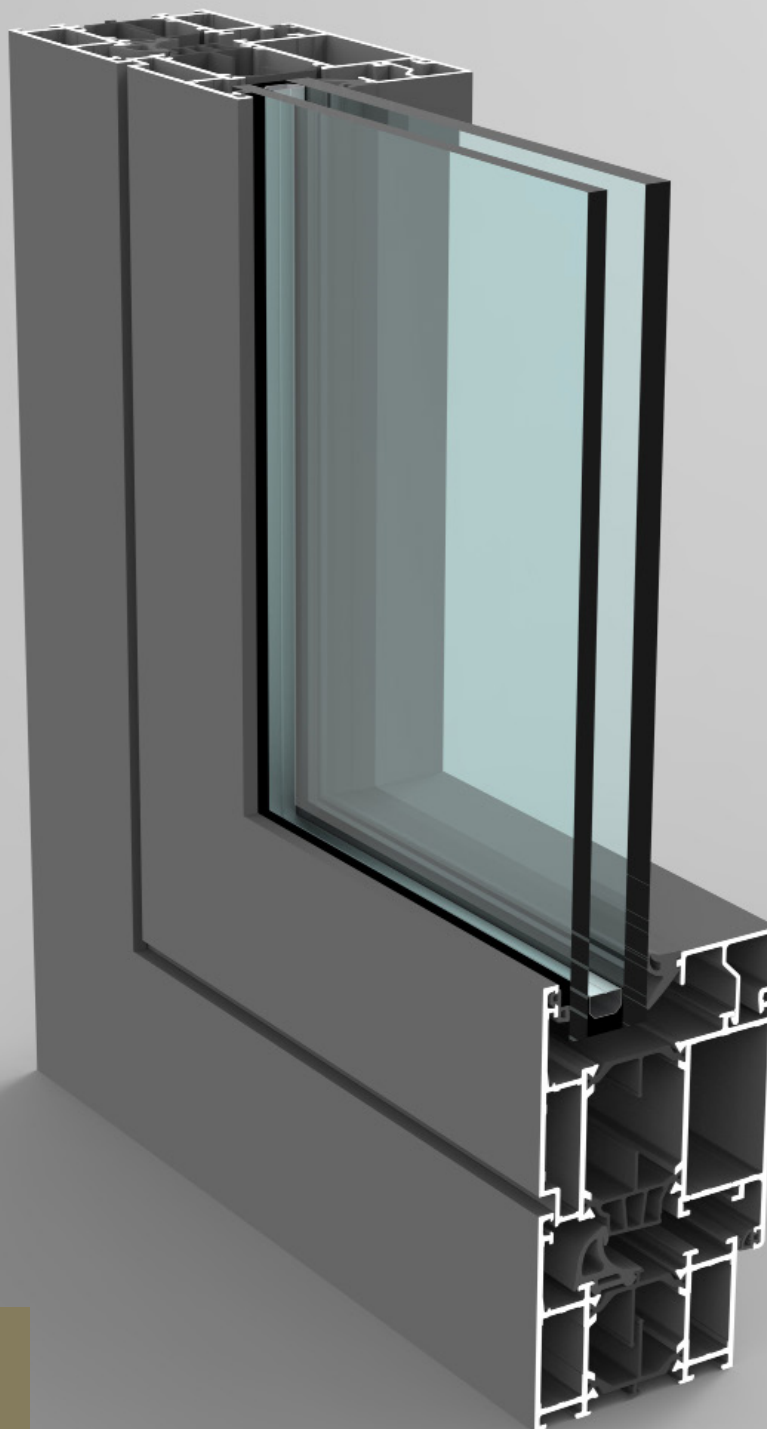
GUTMANN NORTH AMERICA
418 Iroquois Shore Rd | Suite 203,
L6H 0X7, Oakville, ON, Canada
T: + 1 (416) 488 6266

www.gutmann-na.com



GUTMANN S70+

Inswing Casement/Open In System



GUTMANN
New dimensions
offer new
perspectives

ALUMINUM SHAPED BY GUTMANN



GUTMANN S70+ OPEN IN SYSTEM

Innovative technology at its peak, with greater design and constructive flexibility

The GUTMANN S70+ Open in System is a thermally insulated aluminum window system and has been designed and engineered to provide the highest level of quality.

The profile section depth for both the frame and leaf is 70mm = 2 3/4" and is thermally broken. These windows may be installed as independent units or adapted to fit into most of the storefronts, window walls, or curtain wall systems.

SYSTEM DESCRIPTION

- › AW-PG80 Performance Class
- › Profiles with a two-chamber system in symmetrical structure and identical inner & outer glass bead grooves
- › Symmetrical, stable structural design with identical corner and T-connectors
- › Thermally and structurally optimized winglet insulator with high-strength polyamide thermal barrier with a wide range of profile depths
- › Glass up to 2" (50mm) in the fixed panel
- › Life Cycle Tested to AAMA 910-10

SYSTEM PROPERTIES

Frame Size

35 7/16" x 59 1/16" (900 mm x 1500 mm)



Air Leakage Infiltration / Exfiltration

ASTM E283

<0.06cfm/ft² -prior to and after cycling
and <0.03cfm/ft² after Design Load
0.10 cfm/ft² (allowed) @ 6.27 psf



Uniform Load Structural Test Pressure

ASTM E330

+/-5760 Pa (+/- 120.30 psf)



Canadian Air Leakage

ASTM E283

A₃ Level



Design Pressure

+/-3840 Pa (+/- 80.20 psf)



Water Penetration

ASTM E547-00

720 pa (15.04 psf) prior to, after cycling
and after design pressure load



Operating Force

ASTM E2068

< 20N (4.68lbf)



Forced Entry Resistance

ASTM F588

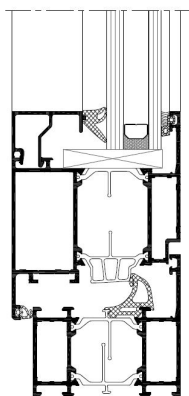
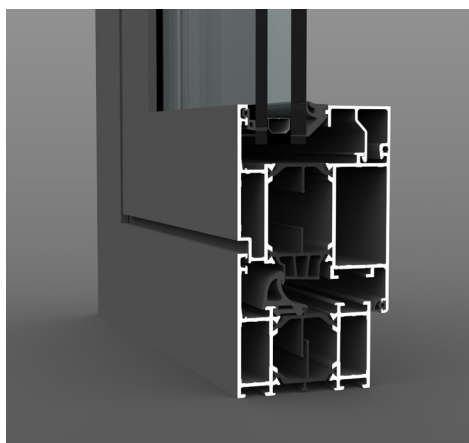
Grade 40 pass



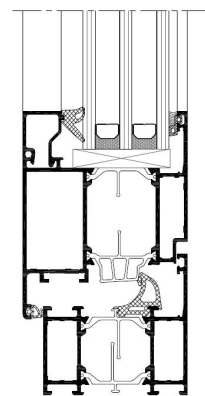
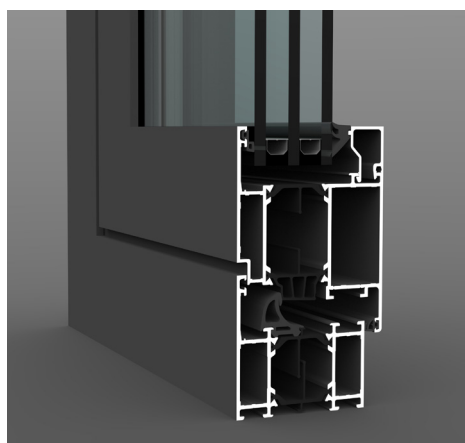
Thermal Transmittance (U-Factor)

Shall not exceed 0.43Btu/hr/ft²-F° for double glazed and 0.37 Btu/hr/ft²-F° with triple glazed. This value may vary according to glass selection and framing configuration.

SYSTEM CROSS-SECTION



Double Glass Unit



Triple Glass Unit



GUTMANN
Innovative
technology
at the
highest level

**BECOME A GUTMANN PARTNER AND
ENJOY THE FOLLOWING ADVANTAGES:**

Industry Expertise: With extensive experience, we stand as a leader in the façade business, showcasing deep industry knowledge and understanding.

Comprehensive Solutions: From structural engineering consulting to implementing advanced system technology, we tailor end-to-end solutions for your unique project requirements.

Quality Commitment: Our reputation in the aluminum industry is built on a steadfast commitment to delivering top-quality products.

Efficient Logistics: Backed by high storage capacity and streamlined logistics, we guarantee swift and punctual deliveries, enhancing overall project efficiency.

Customer-Centric Approach: Success is achieved through the seamless integration of sophisticated design, certified safety, and sustainable profitability, ensuring maximum customer satisfaction.



GUTMANN NORTH AMERICA
418 Iroquois Shore Rd | Suite 203,
L6H 0X7, Oakville, ON, Canada
T: + 1 (416) 488 6266

www.gutmann-na.com