

# Gutmann Unitized Systems

## GENERAL SYSTEM DESCRIPTION

The **Gutmann Unitized Systems** are pre-fabricated, pre-glazed systems designed to improve quality control, accelerate installation, and reduce field labor costs.

› UCW and UWW systems feature advanced gasket solutions for air and weather sealing, including extruded EPDM or silicone gaskets, air and weather seal gaskets, and structural silicone glazing spacers compatible with structural and weather sealants

› Designed to accommodate standard 1" (25.4 mm) infill, with the flexibility to accept glazing thicknesses exceeding 2" (50.8 mm) as needed

› Stack horizontals with double leg stack joint for improved air and water tightness

› Optional steel reinforcement for increased structural capacity

› Different finish options and RAL colors available

› Fully integrated with Gutmann Doors and Windows

› Tested to ASTM and AAMA standards

## Unitized Curtain Wall

### UCW 65 & UCW80

› Standard profile dimensions for UCW 65 from 2 1/2" x 4 7/8" (65 mm x 125 mm) profile to 2 1/2" x 7 11/16" (65 mm x 195 mm) and UCW 80 with a profile of up to 3 5/32" x 10 1/16" (80 mm x 255 mm)

› Designed with continuous PVC glazing frames, providing ultra- thermal performance in a cost effective unitized solution

› Available in Vertical SSG, Horizontal SSG, Four-Sided SSG and Capped Horizontal configurations

## Unitized Window Wall

### UWW 70

› Standard profile dimensions for UWW70 are 2 3/4" x 4 7/8" (70 mm x 125 mm) profile to 2 3/4"x 7 11/16" (70 mm x 195 mm), with custom profiles available to meet specific project requirements.

› Engineered with continuous PVC glazing frames and polyamide thermal breaks for improved thermal performance in a cost-effective, unitized design.

› Available in Vertical SSG and Four-Sided SSG configurations

› Optional split mullions to support pre-fabrication and simplified glazing

› Flexible header and sill track options allowing for interior or exterior on-site installation



Ālia, Honolulu, HI - USA

### UWW 70



Woodbine Hotel & Casino, Toronto - ON

### SYSTEM PROPERTIES UCW & UWW



Thermal Transmittance (U-Factor)  
**NFRC 100**  
0.17 Btu/hr/ft²-F° using COG 0.12  
This value may vary according to glass selection, framing configuration and spandrel to vision ratios.



Air Leakage  
**ASTM E283**  
0.017 cfm/ft² @6.24 PSF (300 Pa)



Water Penetration  
**ASTM E331 | AAMA 501.1**  
Static 20 PSF (1000 Pa)    Dynamic 15 PSF (720 Pa)



Structural Performance  
**ASTM E330**  
Up to +/-41.8 PSF (+/- 2000 Pa)



Cullen Tower - BCM - TX, USA

### SYSTEM PROPERTIES for UWW70



Air Leakage  
**ASTM E283/E283M**  
0.017 cfm/ft² @6.24 PSF (300 Pa)

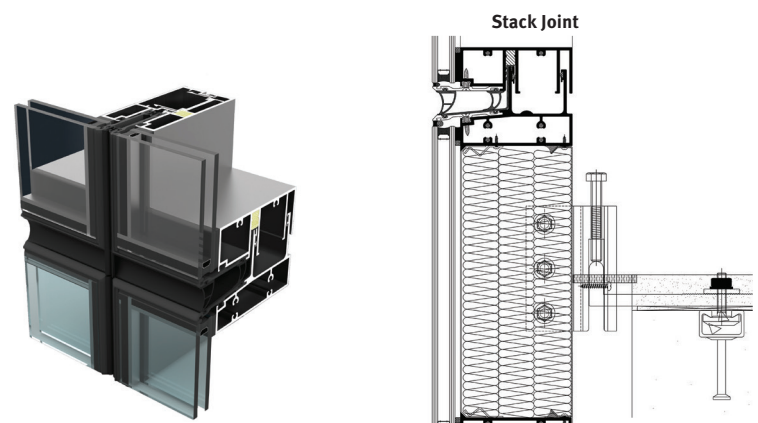


Water Penetration  
**ASTM E331 (REAPPROVED 2023)**  
Static 15 PSF (720 Pa)

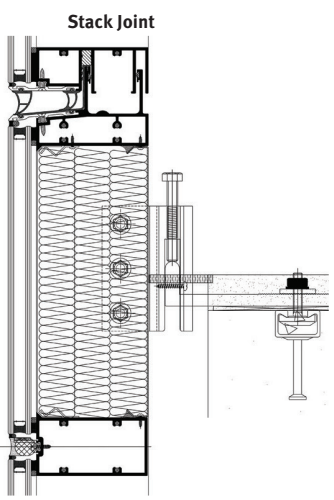


Structural Performance  
**ASTM E330 (REAPPROVED 2021)**  
Up to +/-41.8 PSF (+/- 2000 Pa)

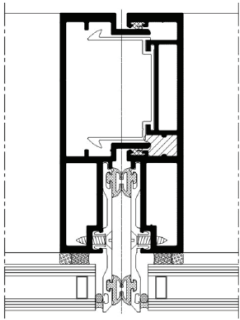
## UNITIZED CURTAIN WALL - UCW65



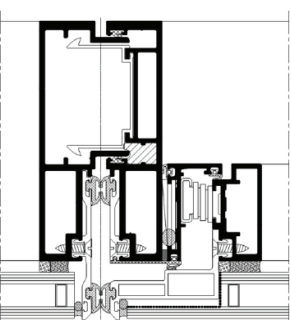
RENDERING



Stack Joint



Section Detail

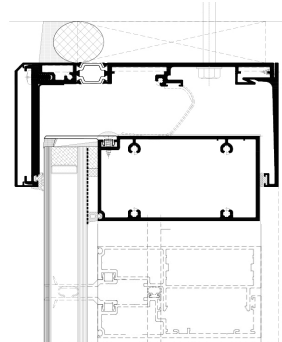


Section Detail With Vent

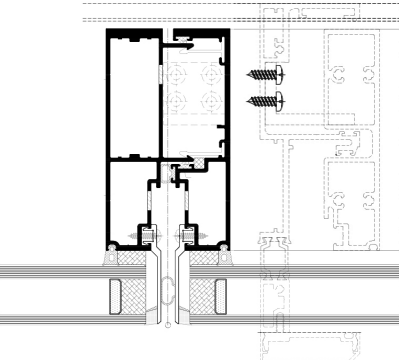
## UNITIZED WINDOW WALL - UWW70



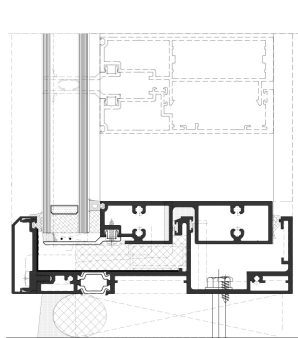
RENDERING



Head Receptor



Section Detail



Bottom/Starter Sill



Avia Labs, CA - USA

### UCW 65



Cullen Tower - BCM - TX, USA

### UCW 80



Ālia, Honolulu, HI - USA

### UWW 70