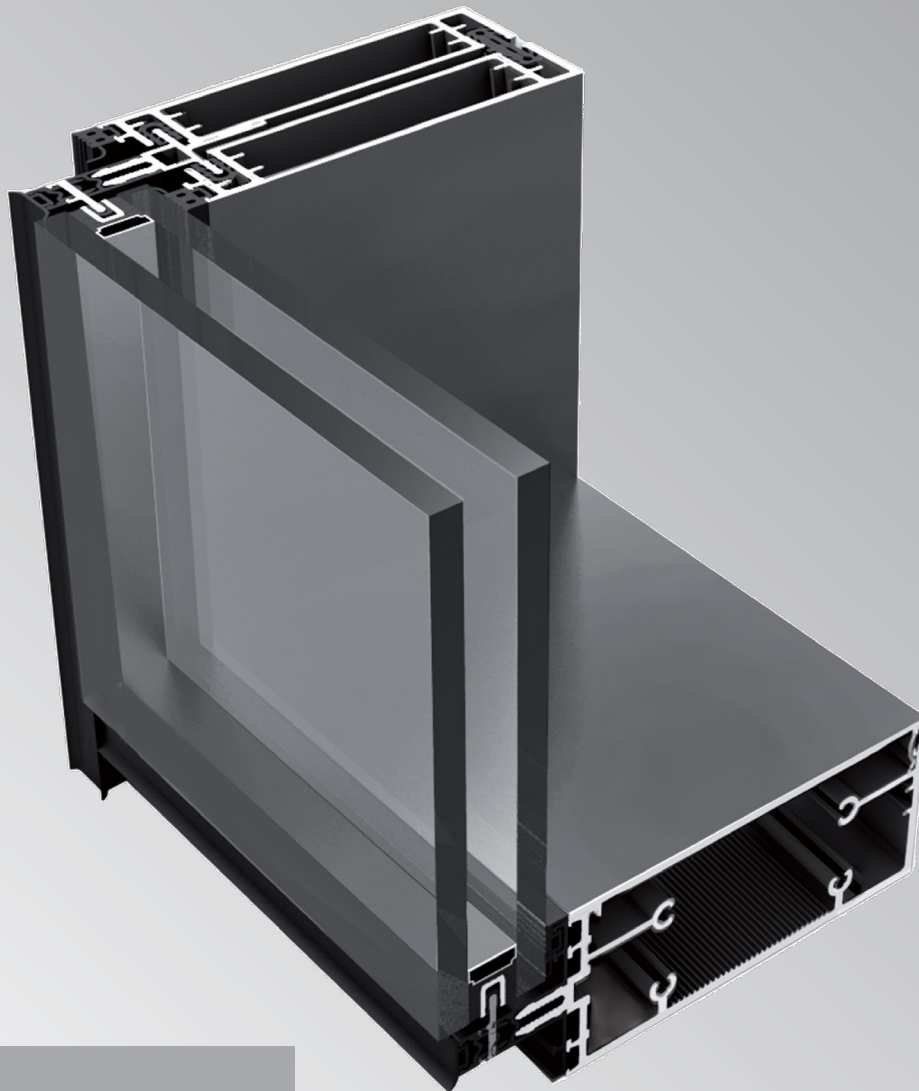




GUTMANN F Series

F50++ Split Wall System



Aluminum
Shaped by Ideas,
Architecture,
Innovation, &
Technology.

ALUMINUM SHAPED BY GUTMANN



GUTMANN F SERIES F50++ SPLIT WALL SYSTEM

Innovative technology at its peak, with greater design and constructive flexibility

The F50++ Split Wall System delivers curtain wall aesthetics with window wall practicality. This innovative split system offers architects and developers the sleek 2" sightlines and premium performance luxury projects demand, while maintaining the cost-effectiveness and installation efficiency that keep projects on schedule and budget.

Pre-glazed split mullions allow for unitized panel assembly and quick installation, while integrating seamlessly with standard Gutmann windows and doors for complete building envelope solutions.

SYSTEM DESCRIPTION

- › Narrow 2" (50mm) sightline
- › Accommodates both dry-glaze and wet-glaze applications
- › Options for 2-sided or 4-sided captured glazing, as well as 4-sided structural silicone glazing (SSG)
- › Structurally glazed split mullion design allows for pre-glazing leading to easy shipping and installation
- › Straight-cut system features no transom profile notching resulting in minimal off-cuts
- › Various system depths to suit most design and load requirements
- › Identical widths of inner glass gaskets at mullions and transoms
- › Glass option of $1\frac{5}{16}$ " - $2\frac{1}{2}$ " (24mm - 65mm) insulating glass and $\frac{3}{8}$ " - $\frac{7}{8}$ " (10mm - 22mm) for single glazed
- › Maximum glass loads up to 880 lbs - 1610 lbs (400 - 730 kg), depending on wind loads
- › Corner mullions available
- › Different colour options are available
- › Proprietary gasket improves thermal performance in dry glazed option
- › Tested to AAMA and ASTM standards

SYSTEM PROPERTIES



Air Leakage Infiltration/Exfiltration
ASTM E283/E283M-19
 $\leq 0.01 \text{ cfm/ft}^2 @ 6.24 \text{ PSF (300 Pa)}$



Structural Performance
ASTM E330
 Up to $\pm 60 \text{ PSF } (\pm 2880 \text{ Pa})$

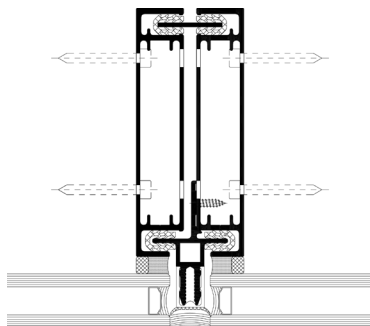


Water Penetration
ASTM E331 | AAMA 501.1
 Static Dynamic
 15 PSF (720 Pa) 15 PSF (720 Pa)

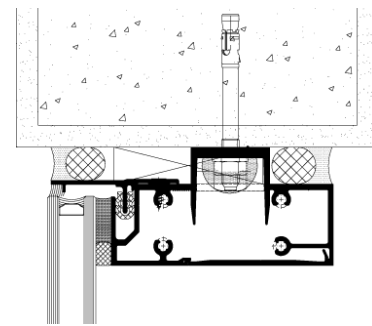


Thermal Transmittance (U-Factor)
NFRC 100
0.18 Btu/hr/ft²-F° using COG 0.10
 This value may vary according to glass choice, framing configuration, and spandrel to vision ratios.

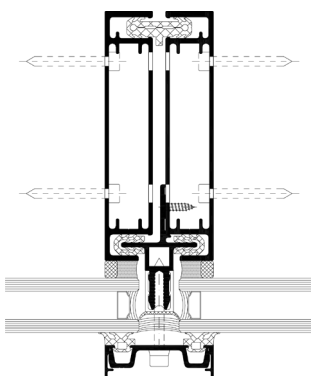
CROSS SECTIONS



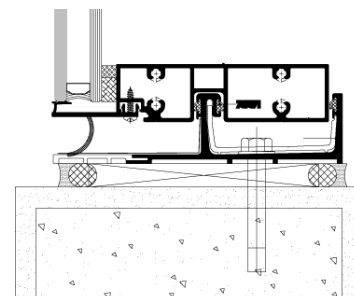
SSG Preglazed Mullion



Head with Receptor



Capped Preglazed Mullion



Sill with Receptor



BECOME A GUTMANN PARTNER AND ENJOY THE FOLLOWING ADVANTAGES

Industry Expertise: With extensive experience, we stand as a leader in the facade business, showcasing deep industry knowledge and understanding.

Comprehensive Solution: From structural engineering consulting to implementing advanced system technology, we tailor end-to-end solutions for your unique project requirements.

Quality Commitment: Our reputation in the aluminum industry is built on a steadfast commitment to delivering top-quality products, backed by rigorous testing, reliable performance and consistent craftsmanship.

Efficient Logistics: Backed by high storage capacity and streamlined logistics, we guarantee swift and punctual deliveries, enhancing overall project efficiency.

Customer-Centric Approach: Success is achieved through the seamless blend of refined design, rigorous safety, and lasting value, all working together to exceed customer expectations and build long-term partnerships.

GUTMANN NORTH AMERICA

US Office: 8745 Washington Blvd - Studio E
Culver City | California

Canada Office: 203-418 Iroquois Shore Rd.
Oakville | Ontario

T: + 1 (416) 488 6266
E: info@gutmann-na.com
gutmann-na.com

Follow us on social media



LEARN MORE

